

Yonge North Subway Extension | facts

location

- The Yonge North Subway Extension is a cross-jurisdictional project in the City of Toronto, Vaughan, Markham, and Richmond Hill
- The extension runs north on Yonge Street from Finch Avenue in Toronto to the Richmond Hill/Langstaff Gateway Urban Growth Centre at Highway 7 in Richmond Hill



length and station information

- 7.4 kilometre extension of Line 1
- Includes up to 6 stations at Cummer/Drewry, Steeles, Clark, Royal Orchard, Langstaff/Longbridge and Richmond Hill Centre

connections

- The northern extension of the subway will create a transit hub connecting GO rail and bus service with Viva/YRT rapid transit and local bus services
- Planned Highway 407 GO Bus Rapid Transit Transitway
- York Region Transit Bus Terminal

funding

- On April 10, 2019, the Province of Ontario announced funding for the capital construction of the Yonge North Subway Extension
- To complete the Preliminary Design and Engineering for the YNSE, York Region, through federal funding, committed \$36 million and the Province of Ontario committed \$55 million

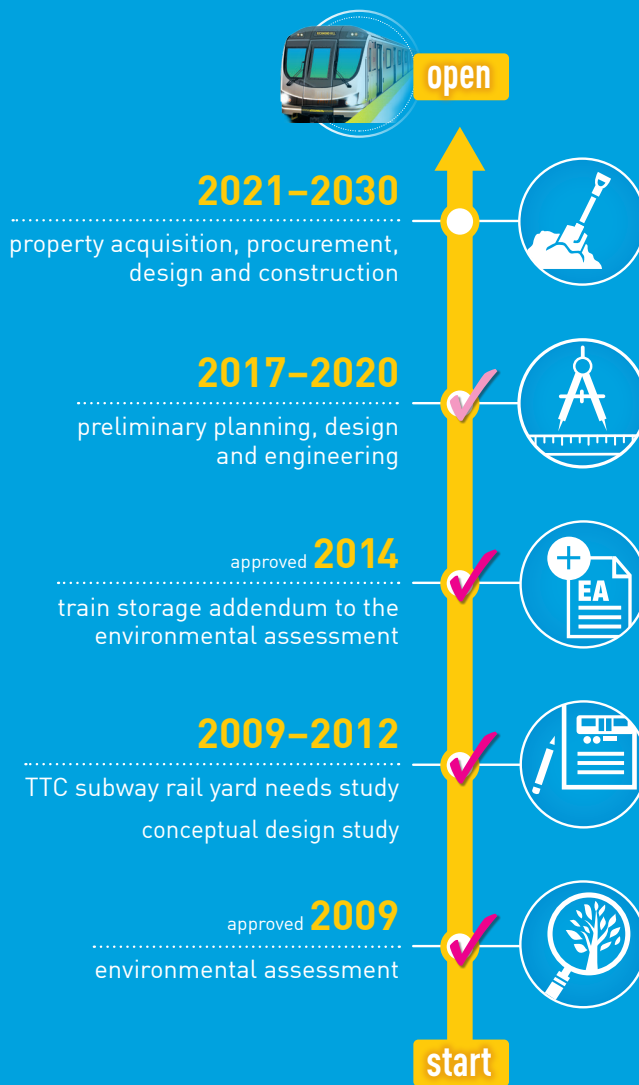
existing and emerging development on the Yonge corridor



Map not to scale

<p>by 2031</p> <p>60,000 new jobs</p> <p>88,000 new residents</p> <p>165,000 people per day</p> <p>2 people per second on the Yonge North Subway Extension</p>	<p>connects</p> <p>2 employment megazones in the GTA</p> <p>636,600 jobs in York Region</p> <p>52,000+ employers in York Region</p>	<p>reduces</p> <p>3,300 bus trips required to service this segment of Yonge Street by the time it's built which will save over</p> <p>13 tonnes of greenhouse gas emissions per workday</p>
--	--	---

project preliminary timeline*



*Schedule subject to change.

taking all the right steps

Since 2003, York Region has been planning, designing and advocating for the Yonge North Subway Extension, investing \$10 million to date on the project. We've undertaken the Environmental Assessment [EA], Conceptual Design Study, and addendums to the EA. We're currently working in partnership with the Province and Toronto to complete the Preliminary Design and Engineering phase of the YNSE.

key benefits

- Saves over 13 tonnes of greenhouse gas [GHG] per workday by replacing the 3,300 bus trips required to service this segment of Yonge Street.
- Services a demonstrated need—with the potential ridership of 165,000 per day.
- During construction it will create 21,800 person-years of employment and be the catalyst for more than 60,000 jobs and additional housing options for up to 88,000 residents by 2031.



For more information about the project and to subscribe for project updates, visit www.vivaNext.com/YongeSubwayExt

[facebook/vivaNext](https://www.facebook.com/vivaNext)

[twitter/vivaNext](https://twitter.com/vivaNext)

[instagram/vivaNext](https://www.instagram.com/vivaNext)

Email: contactus@vivanext.com

Telephone: 905-886-6767