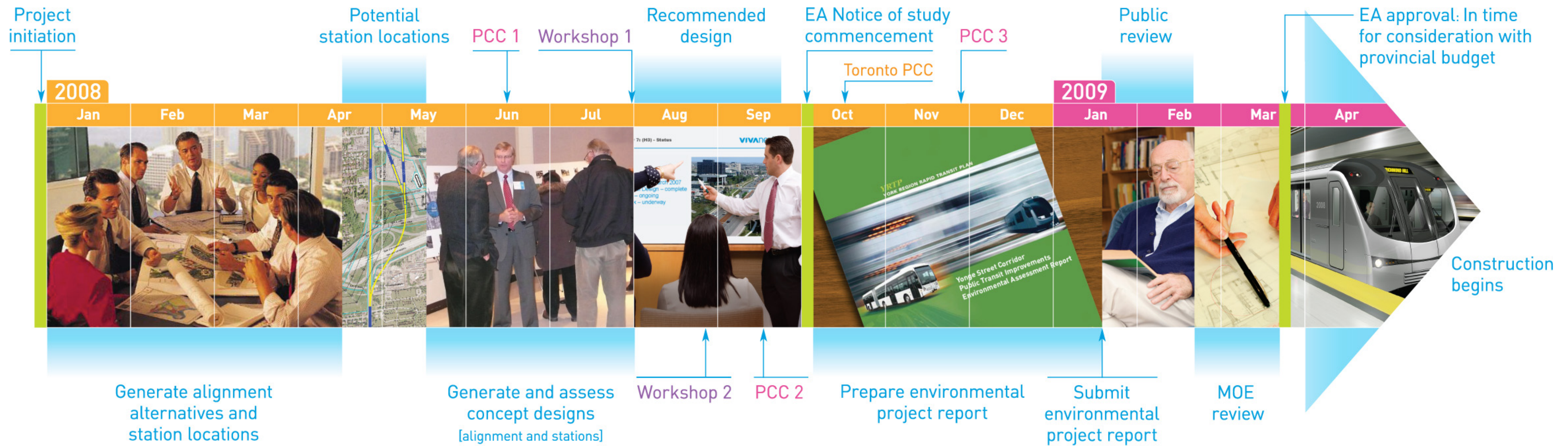


# the study needs your input...

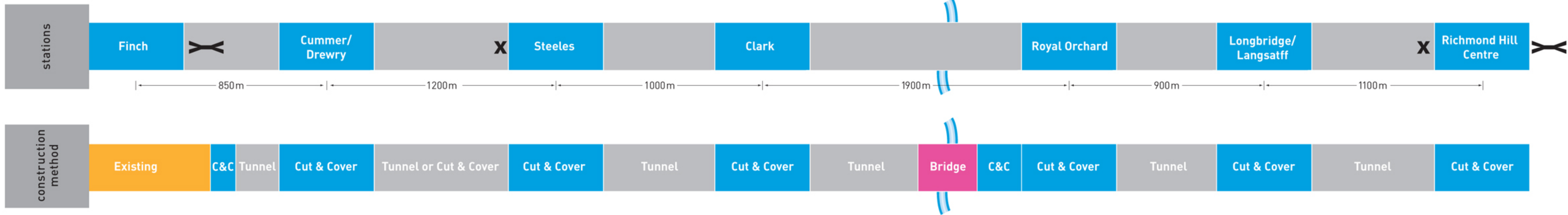


## be involved

> public consultation centre 3: late november

# yonge subway extension



## station planning



surface facilities/connections	Finch	Cummer/Drewry	Steeles	Clark	Royal Orchard	Longbridge/Langstaff	Richmond Hill Centre
13-bay TTC bus terminal [existing]; 6-bay after subway extension		bus turn-around loop	13-bay TTC bus terminal				
17-bay Regional bus terminal [existing]; 4-bay after subway extension			12-bay YRT bus terminal				28-bay YRT   Viva bus terminal
Finch West LRT							407 Transitway & Richmond Hill GO Rail
PPUDO			PPUDO			PPUDO	PPUDO
3214 park-n-ride (existing)						Approx. 2000 to 2500 park-n-ride	
Substation			Substation		Substation		Substation

### screening criteria

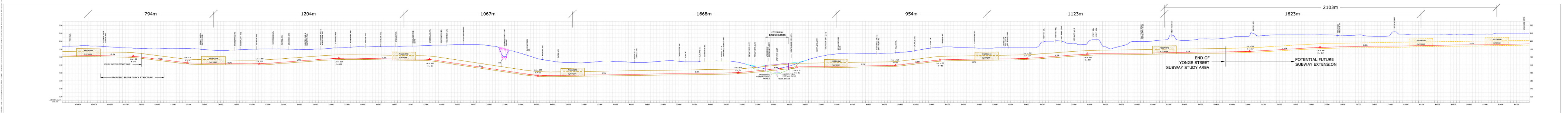
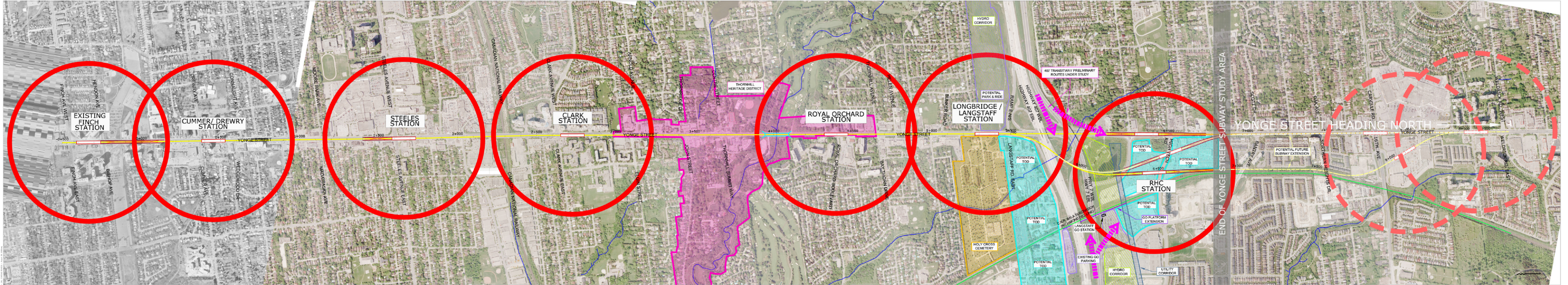
existing densities		80	85	110	80	30	40
planned densities*		120 [conservative]	180 - 290	170 - 225	100 - 130	95 - 170	240 - 580
transportation connection		✓	✓			✓	✓
natural environment		✓	✓	✓	✓	✓	✓
cultural environment		✓	✓	✓	✓	✓	✓

Tail track:   
 Cross track: 

\*Persons per hectare

Not to scale

Yonge Street Subway Extension  
concept plan and profile





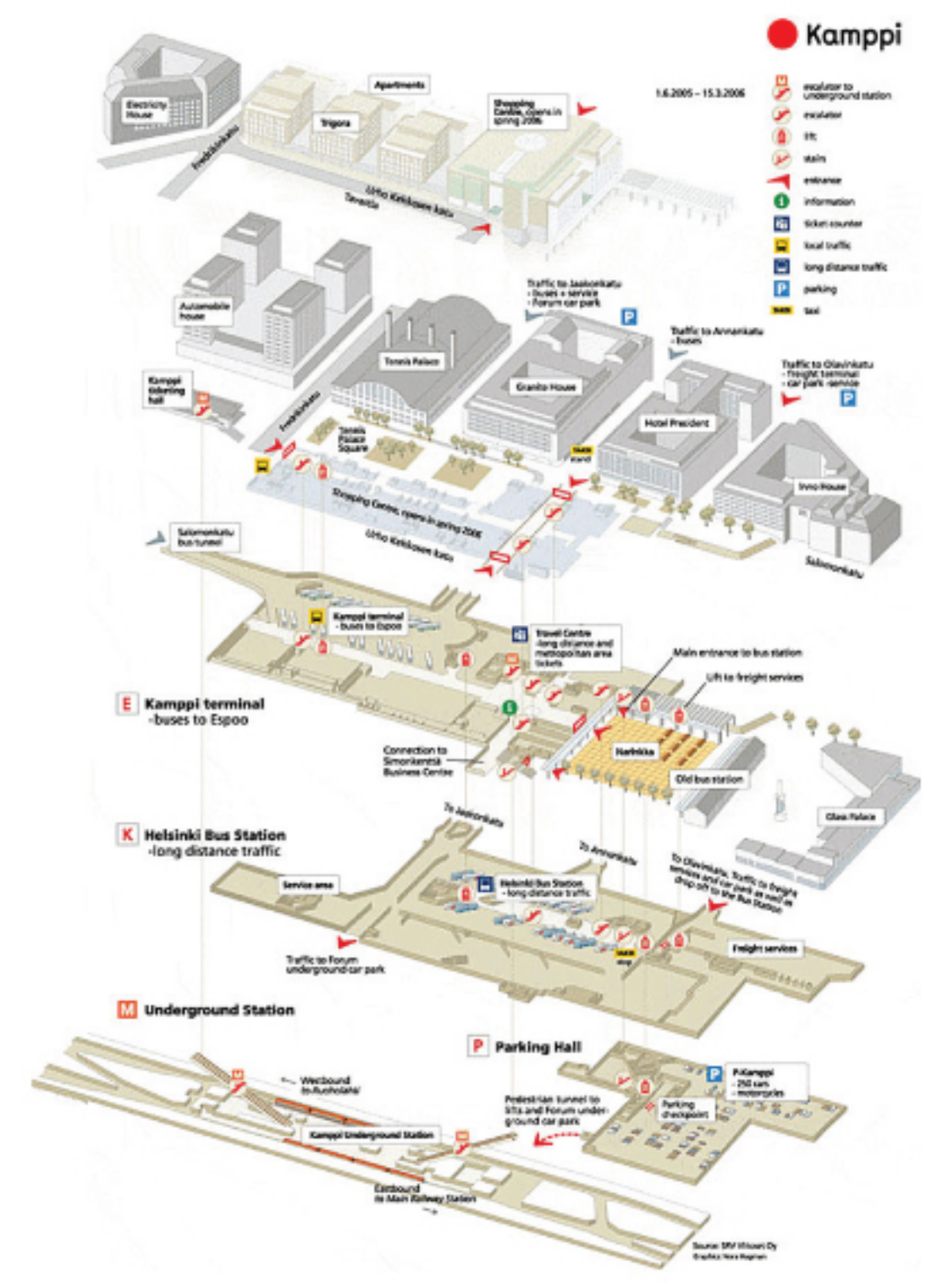
**vivaNext ~ a key priority**

## Top 15 Priorities

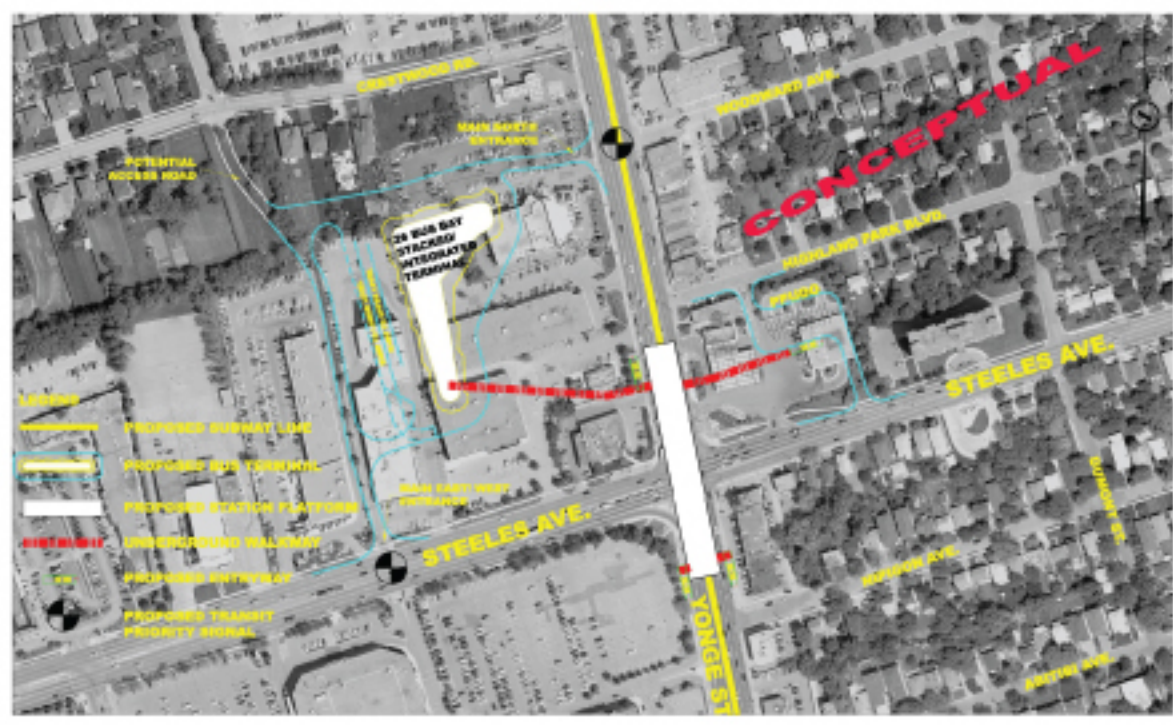
Within the first 15 years of the RTP's implementation, the top 15 priorities for early implementation are:

1. Viva Hwy 7 and Yonge St through York Region
2. Brampton's Queen St Acceleride
3. Spadina subway extension to Vaughan Corporate Centre
4. Yonge subway extension to Richmond Hill Centre
5. Eglinton rapid transit from Pearson Airport to Scarborough Centre
6. Upgrade/extension of Scarborough Rapid Transit line
7. Finch/Sheppard rapid transit from Pearson Airport to Scarborough Centre and Meadowvale
8. Express Rail on Lakeshore line from Hamilton to Oshawa
9. Rapid transit in Hamilton from McMaster University to Centennial Parkway
10. Hurontario rapid transit from Port Credit to Brampton
11. 403 Transitway from Mississauga City Centre to Renforth Gateway
12. Rail link between Union Station and Pearson Airport
13. Rapid transit service along Hwy 2 in Durham
14. Improvements/extension of GO Rail service to Bowmanville
15. Early phases of BRT service on Dundas St in Halton and Peel

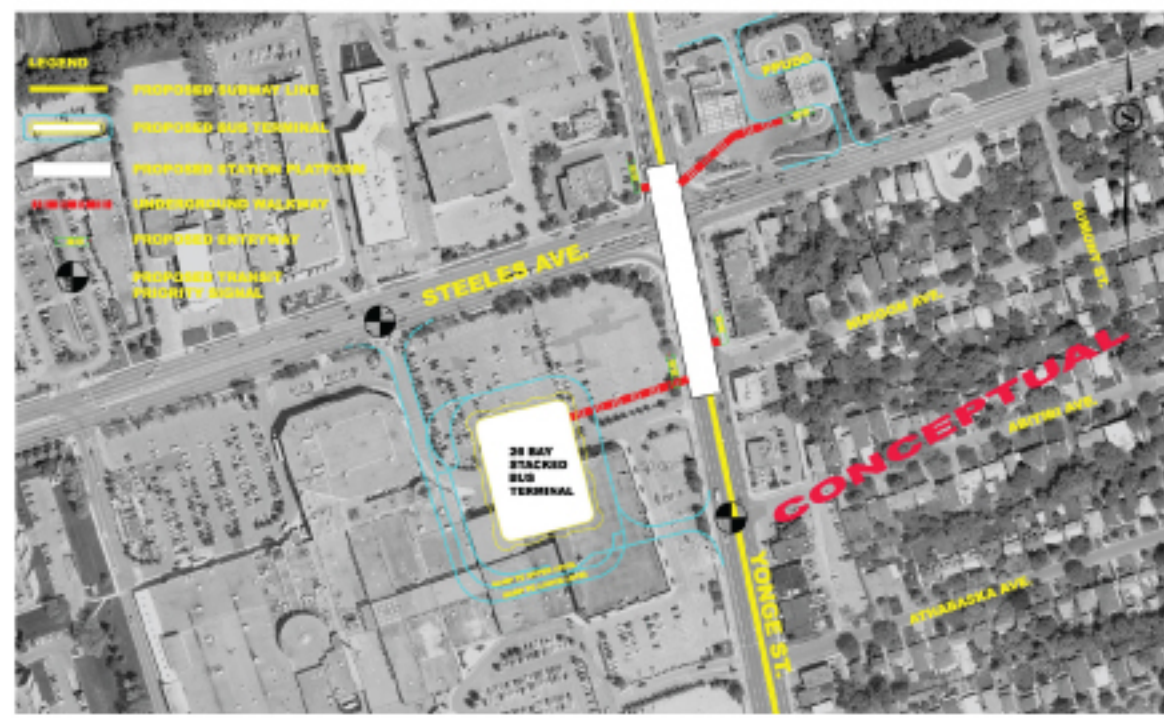
# yonge subway extension steeles station options



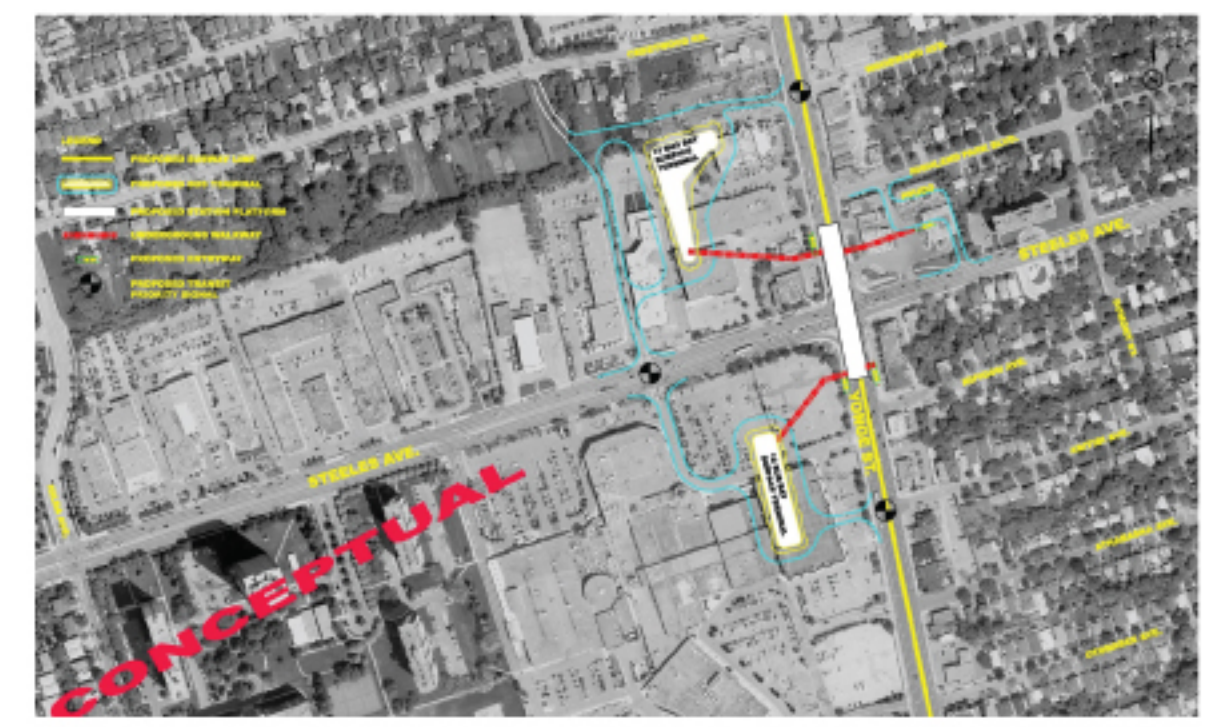
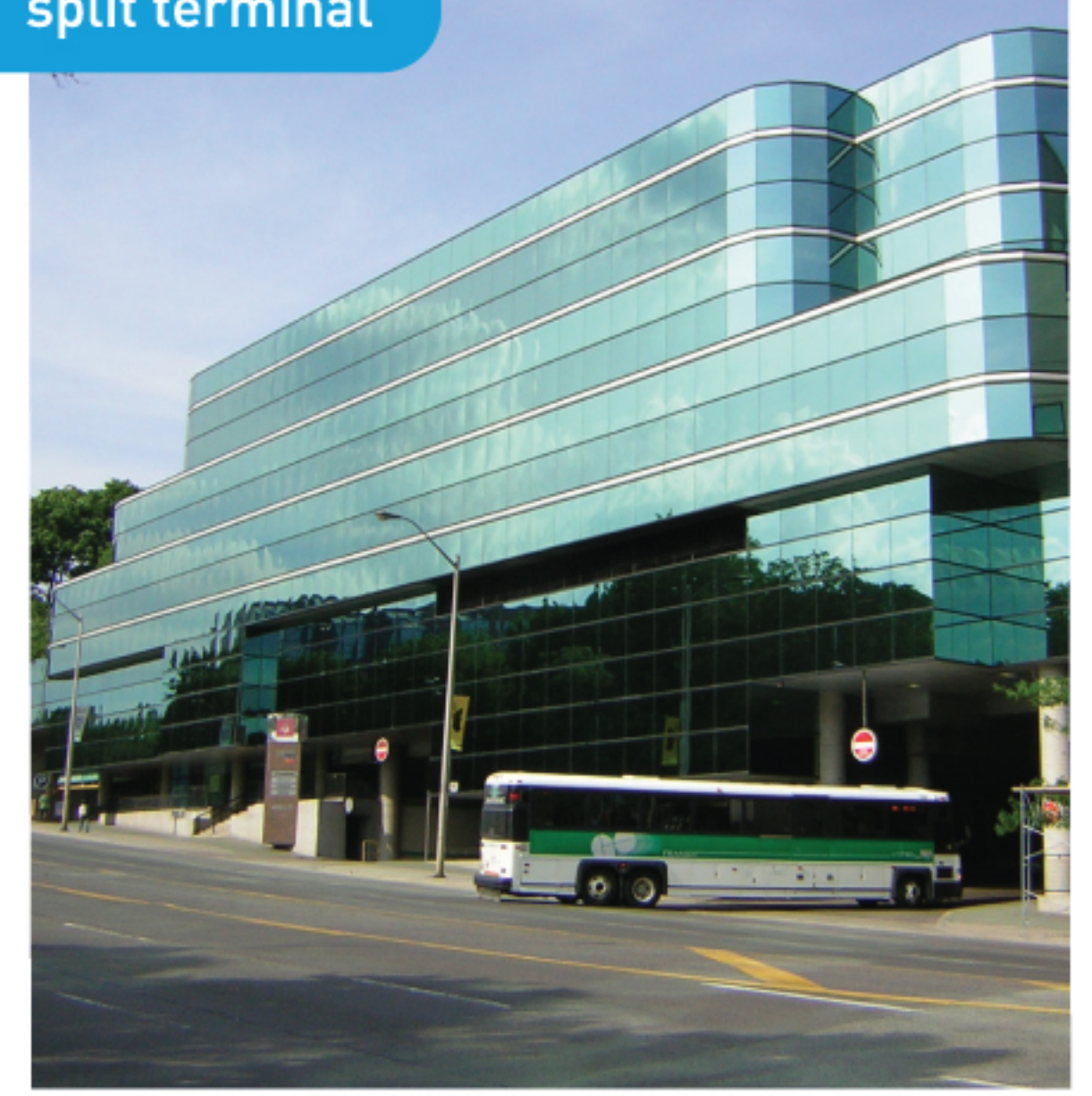
stacked terminal



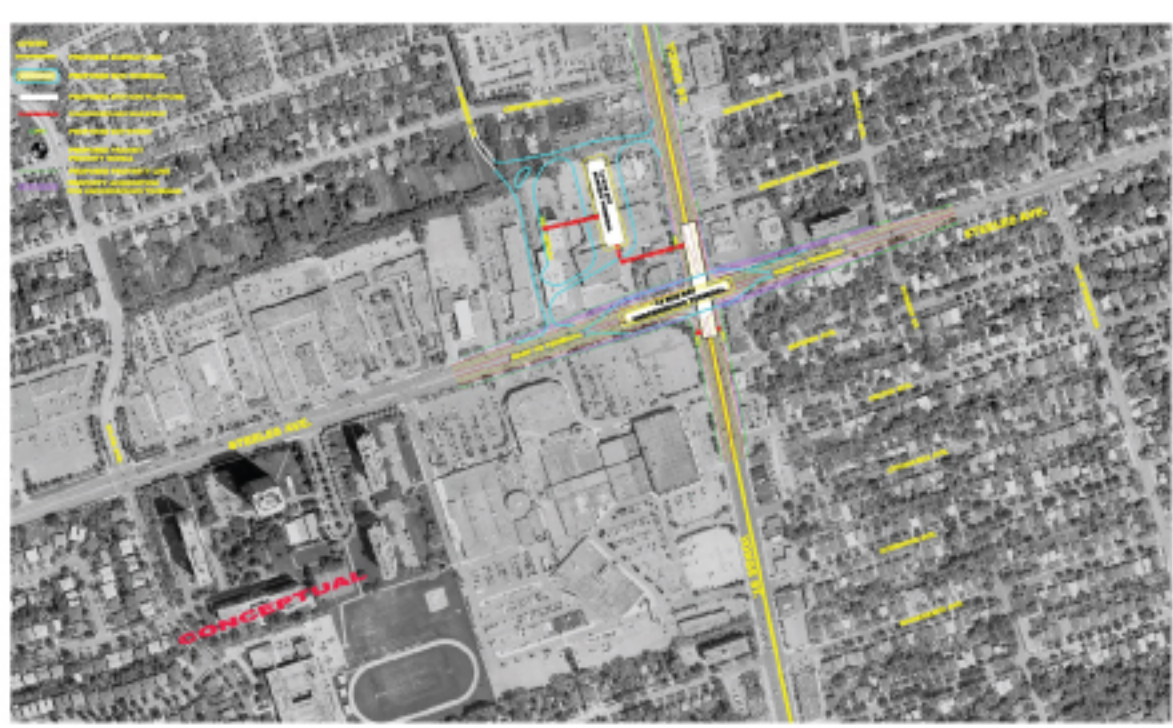
stacked terminal



split terminal



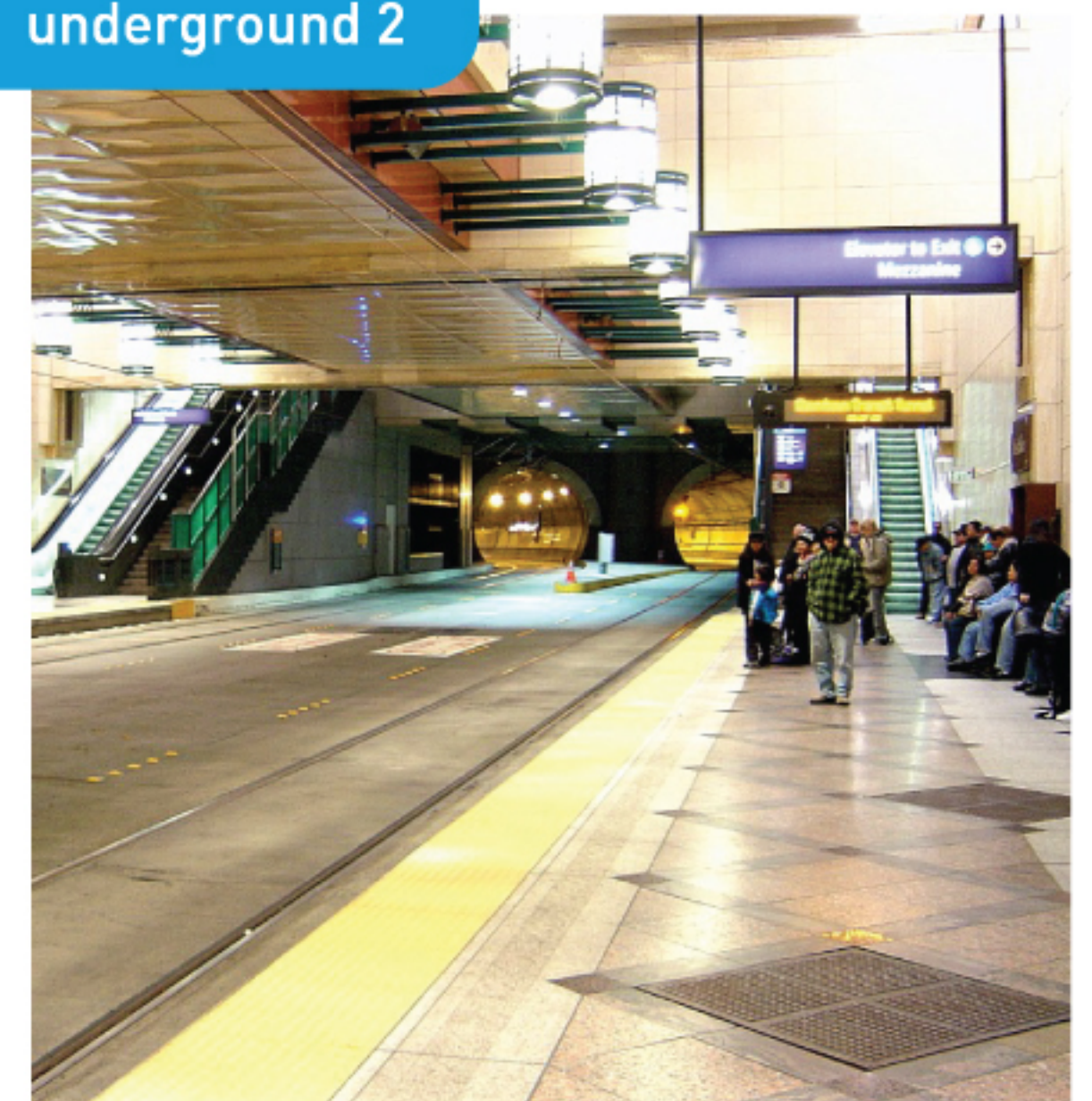
surface underground



underground 1



underground 2



# heritage bridge styles



Railing Style



Bridge Profile



Railing Style



Bridge Profile



Railing Style



Bridge Profile

## heritage bridge elements



Lighting Feature

Railing Style



Bridge Profile



Railing Style



Bridge Profile



Lighting Feature

Railing Style



Abutment



Gateway Feature



Bridge Profile



Railing Style



Bridge Profile

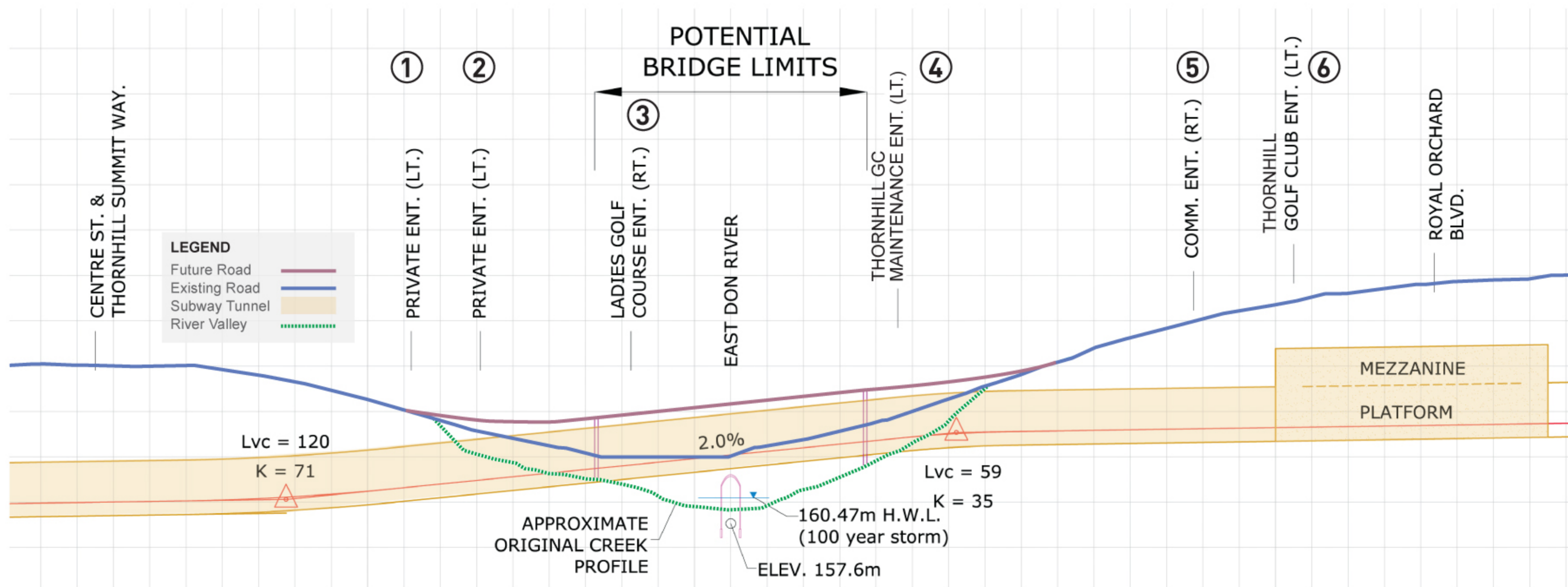
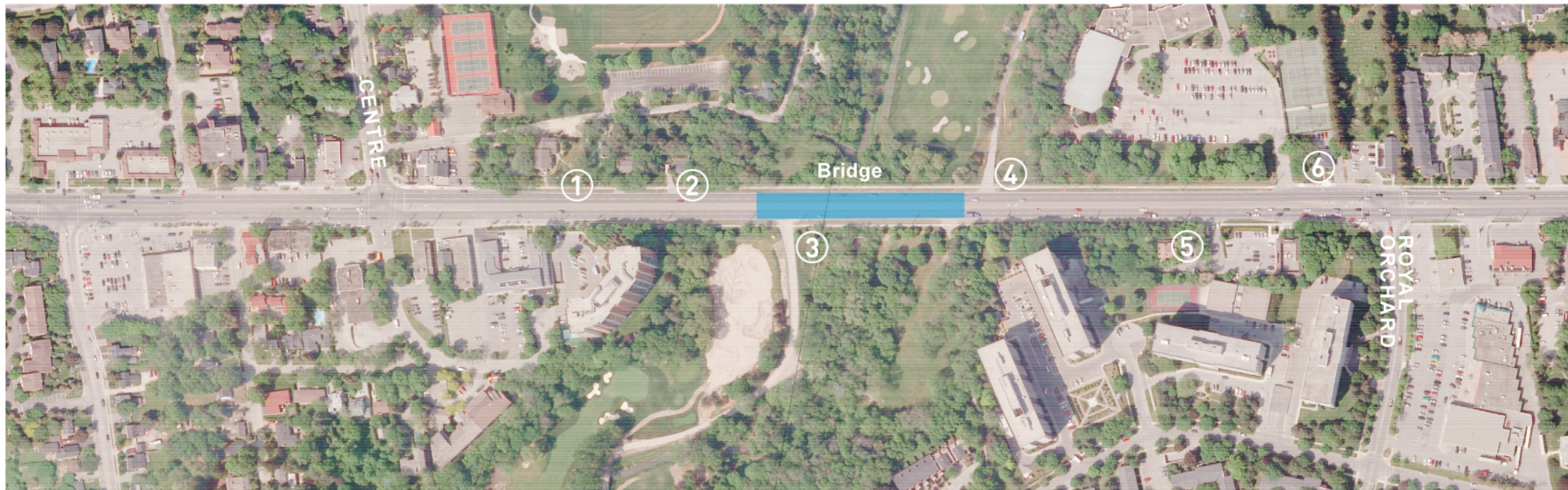


Railing Style



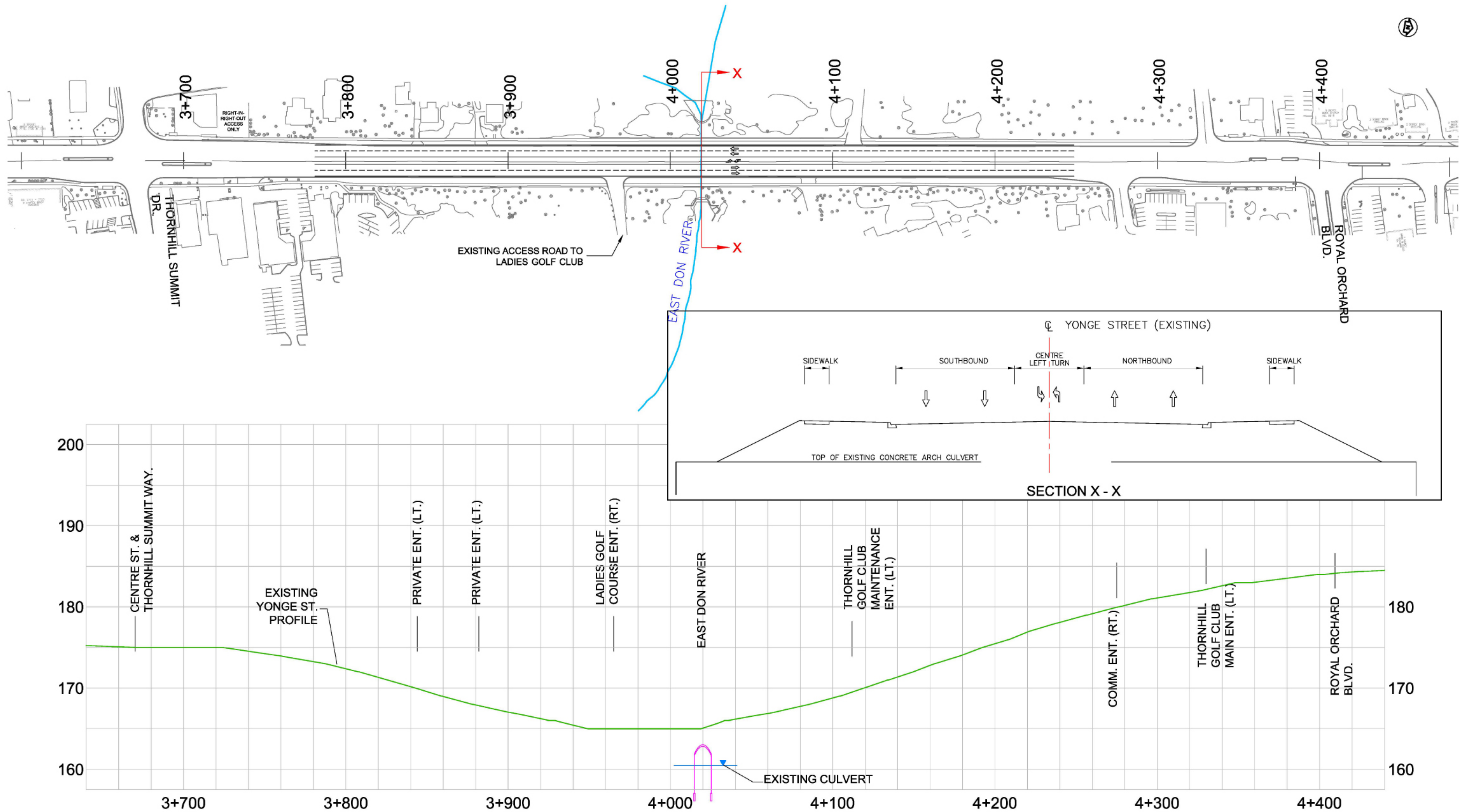
Bridge Profile

# east don river crossing



# east don river bridge ~ proposed construction staging

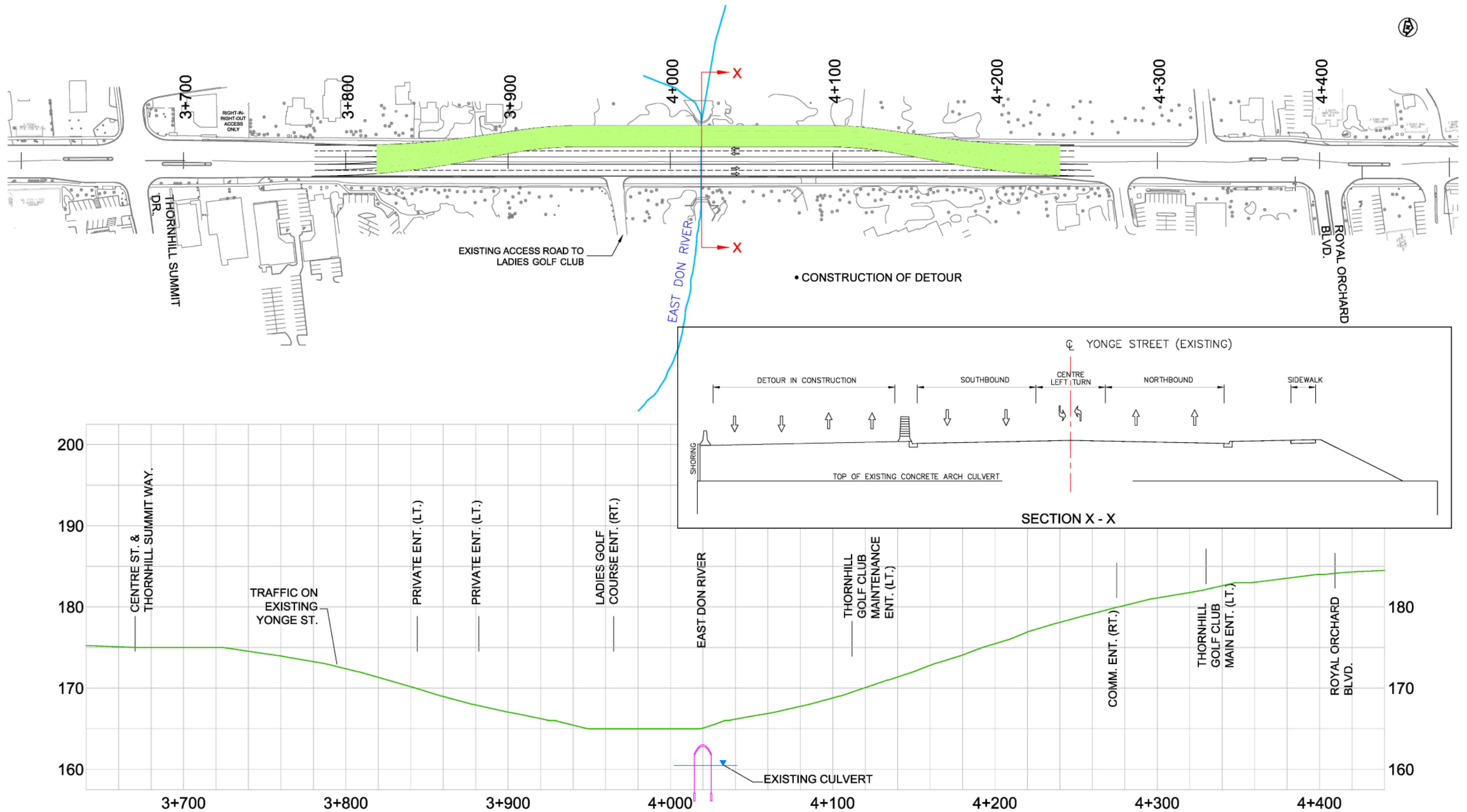
## existing condition





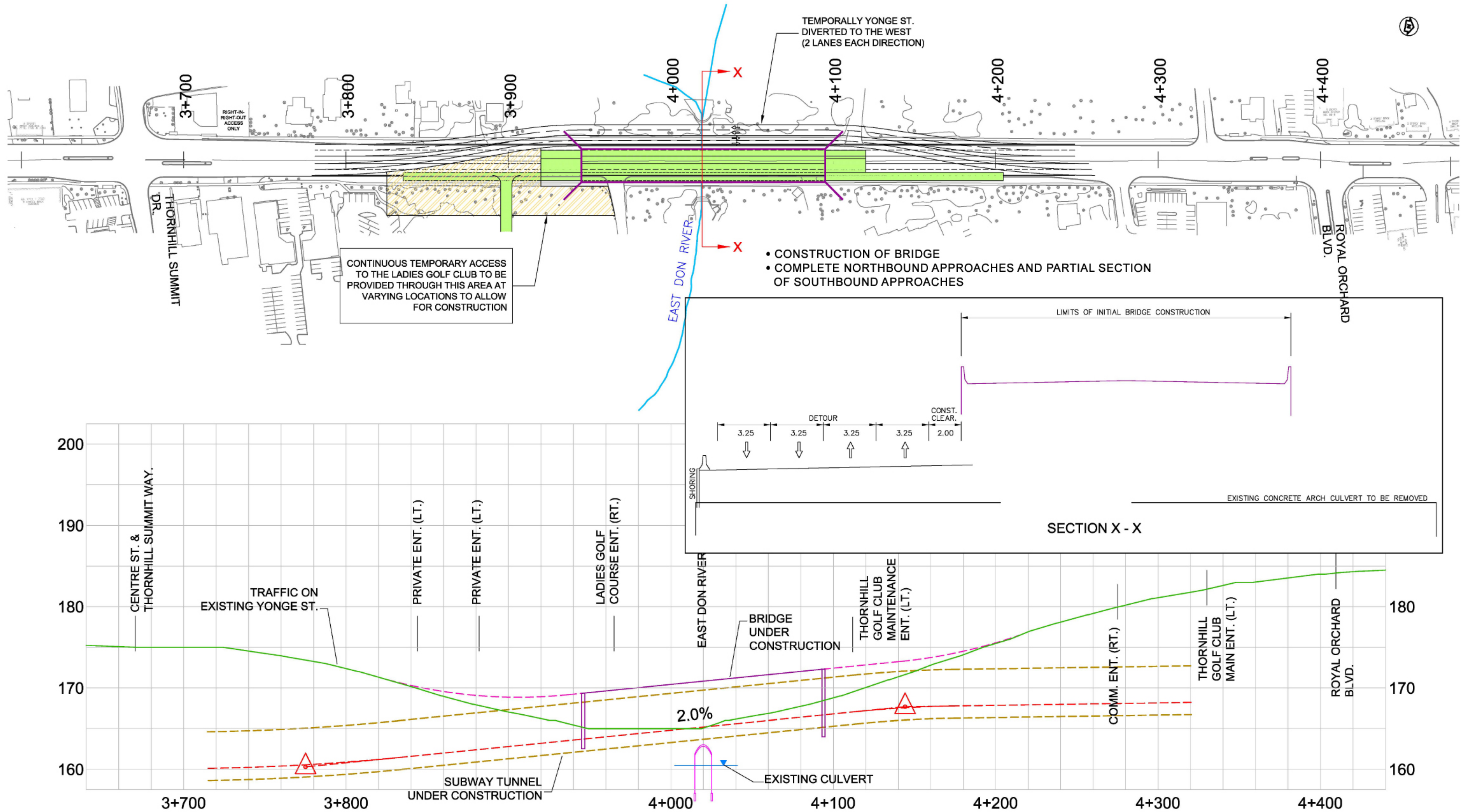
# east don river bridge ~ proposed construction staging

## stage 1



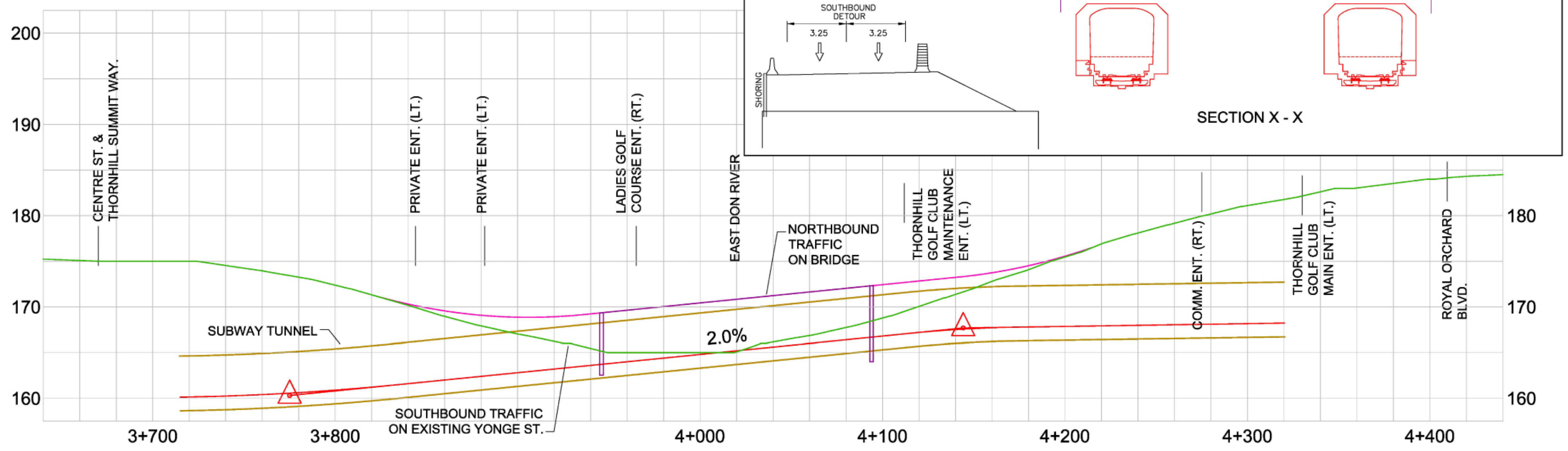
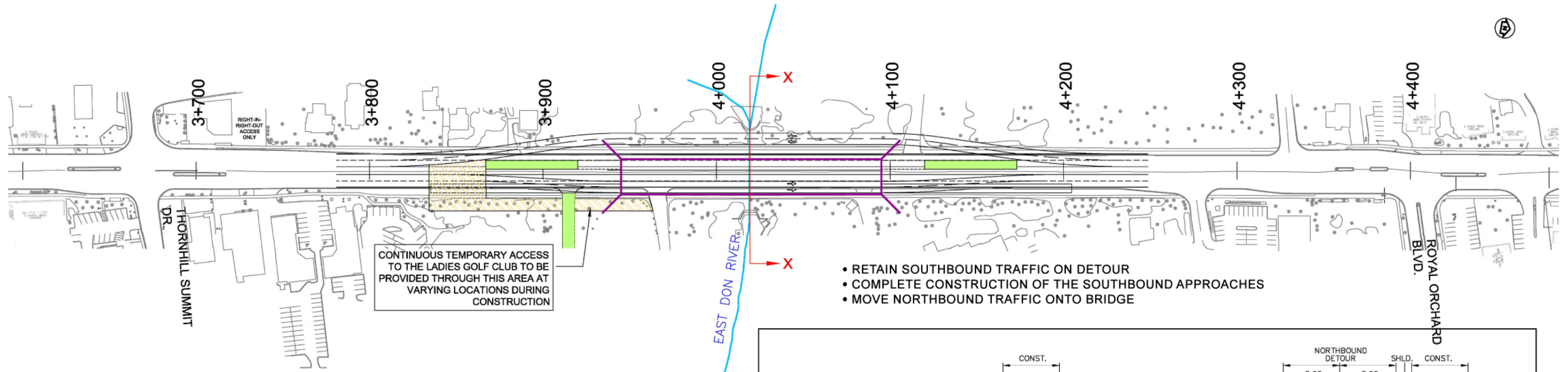
# east don river bridge ~ proposed construction staging

## stage 2



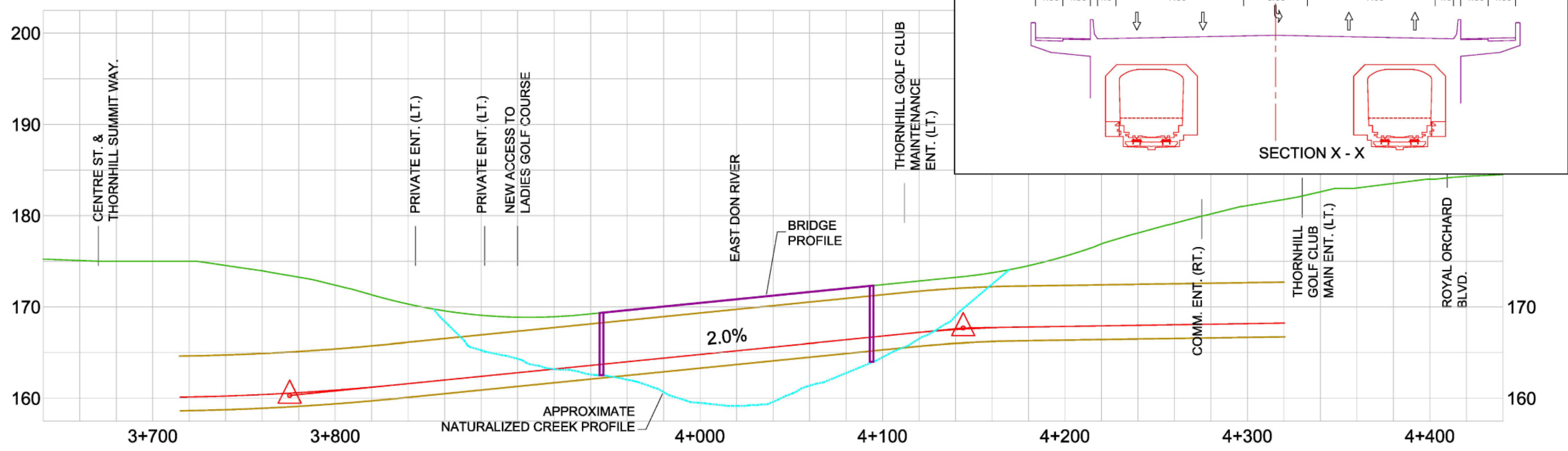
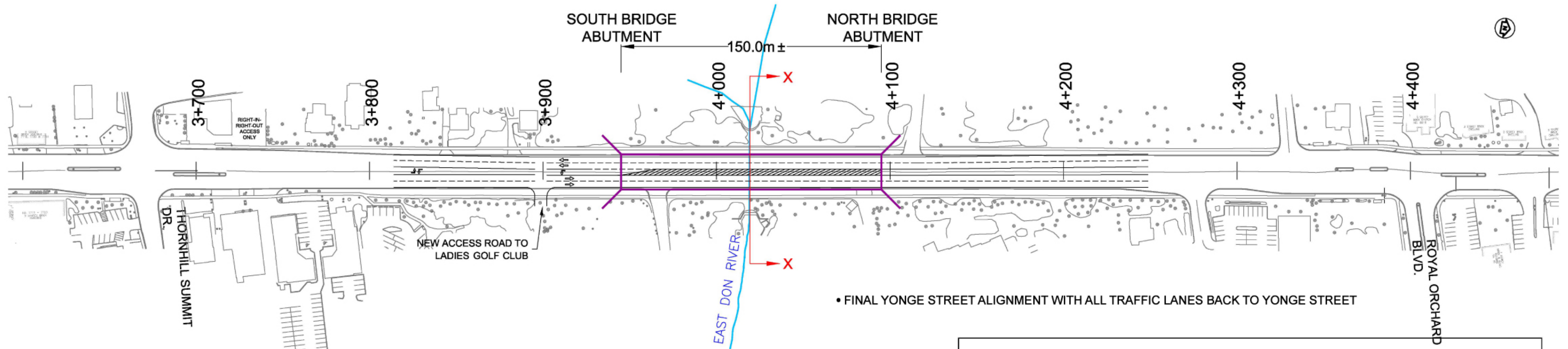
# east don river bridge ~ proposed construction staging

## stage 3



# east don river bridge ~ proposed construction staging

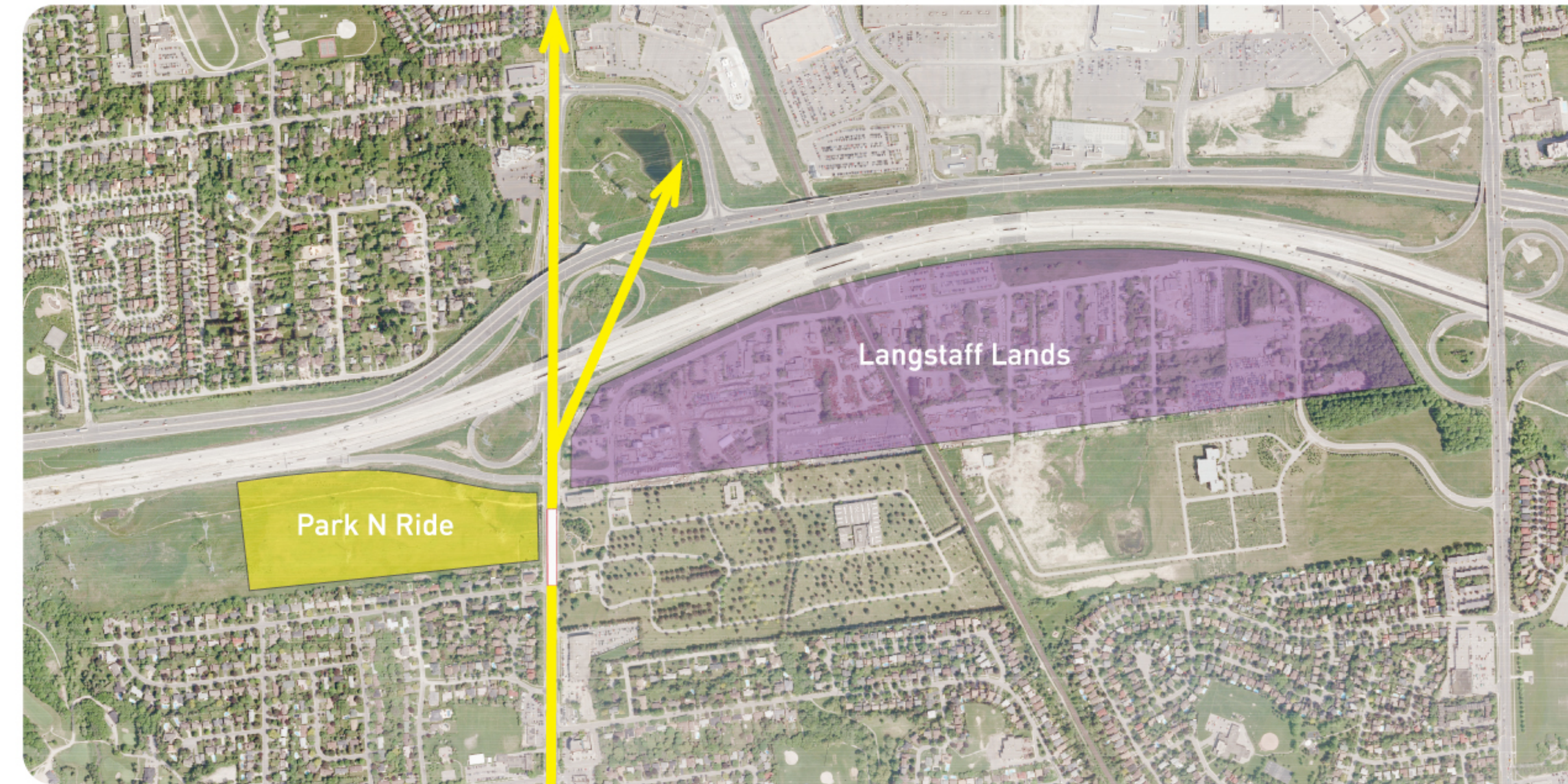
## final condition



# longbridge / langstaff station

Design features that address community concerns:

- > Noise buffers
- > Maintaining a green corridor connection
- > Bio swales
- > Sustainable treatments for the parking area



# richmond hill centre alignment

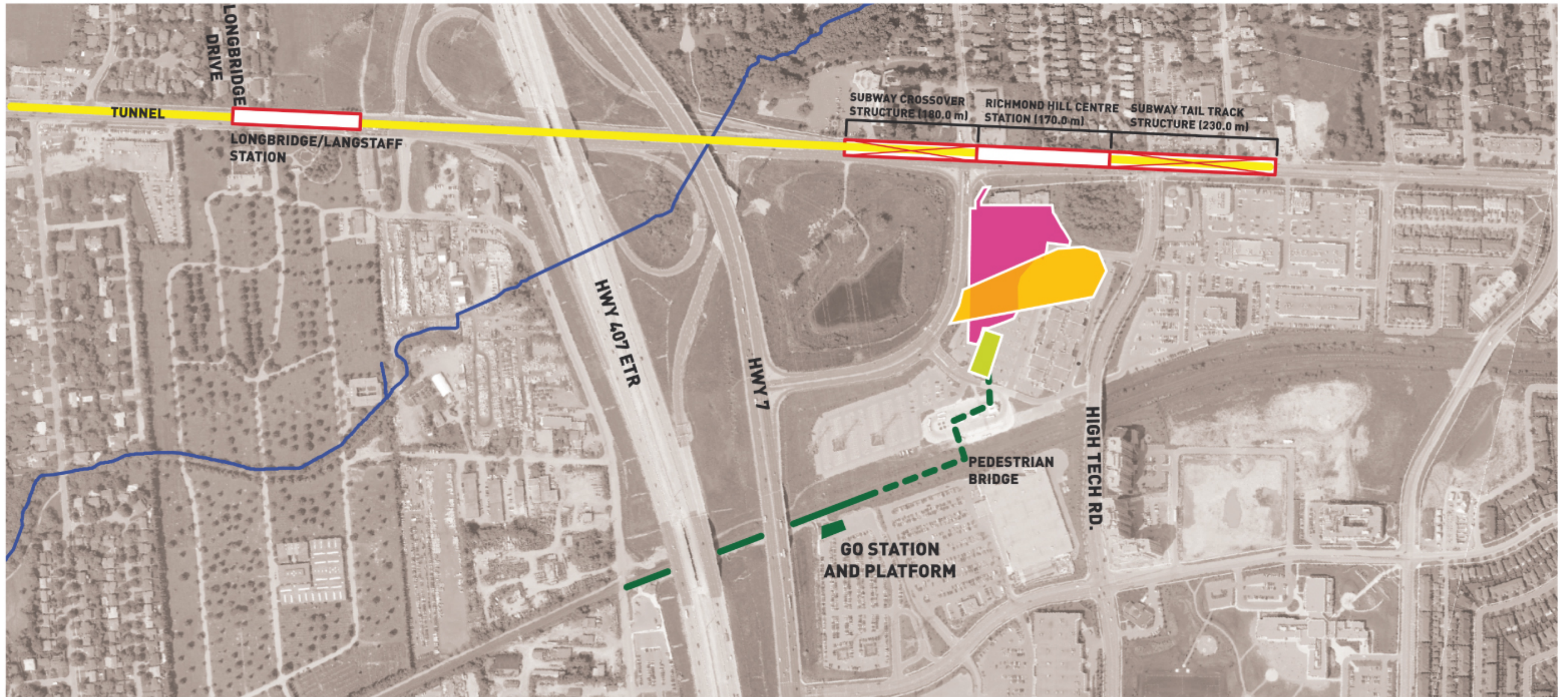


scale: 1:2000

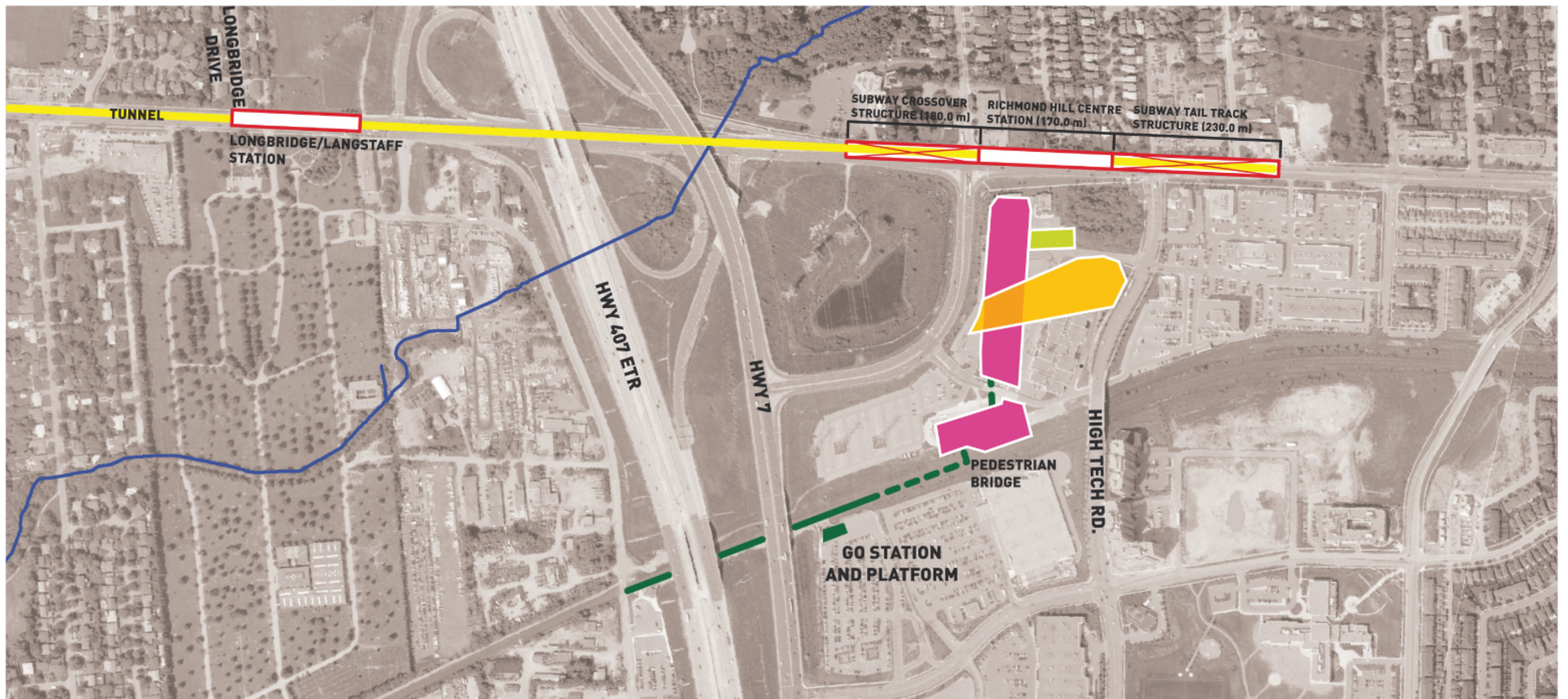
# richmond hill centre station facilities

## alignment a

### stacked bus terminal



### bus terminal at grade



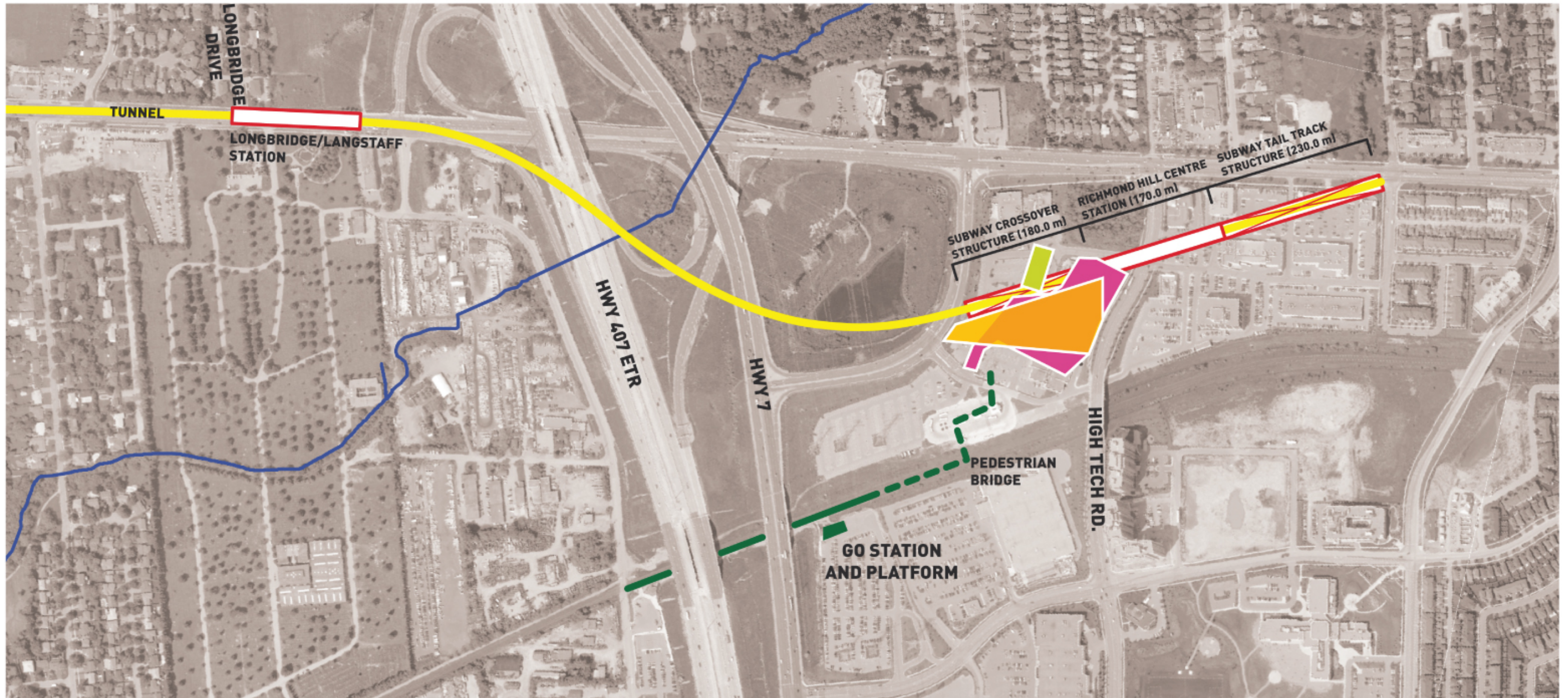
#### legend

- bus terminal
- 407 transitway station
- passenger pick-up and drop-off [ppudo]

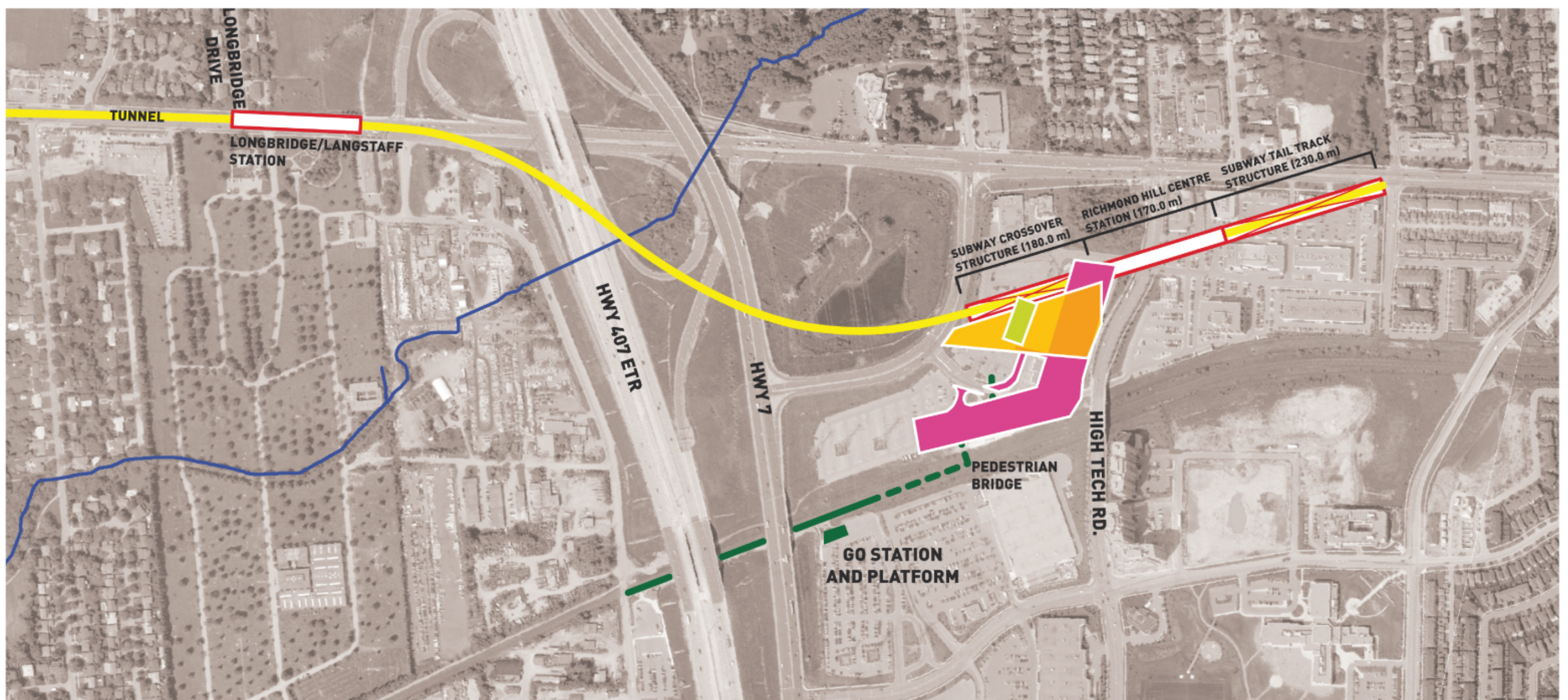
# richmond hill centre station facilities

## alignment b

### stacked bus terminal



### bus terminal at grade



#### legend

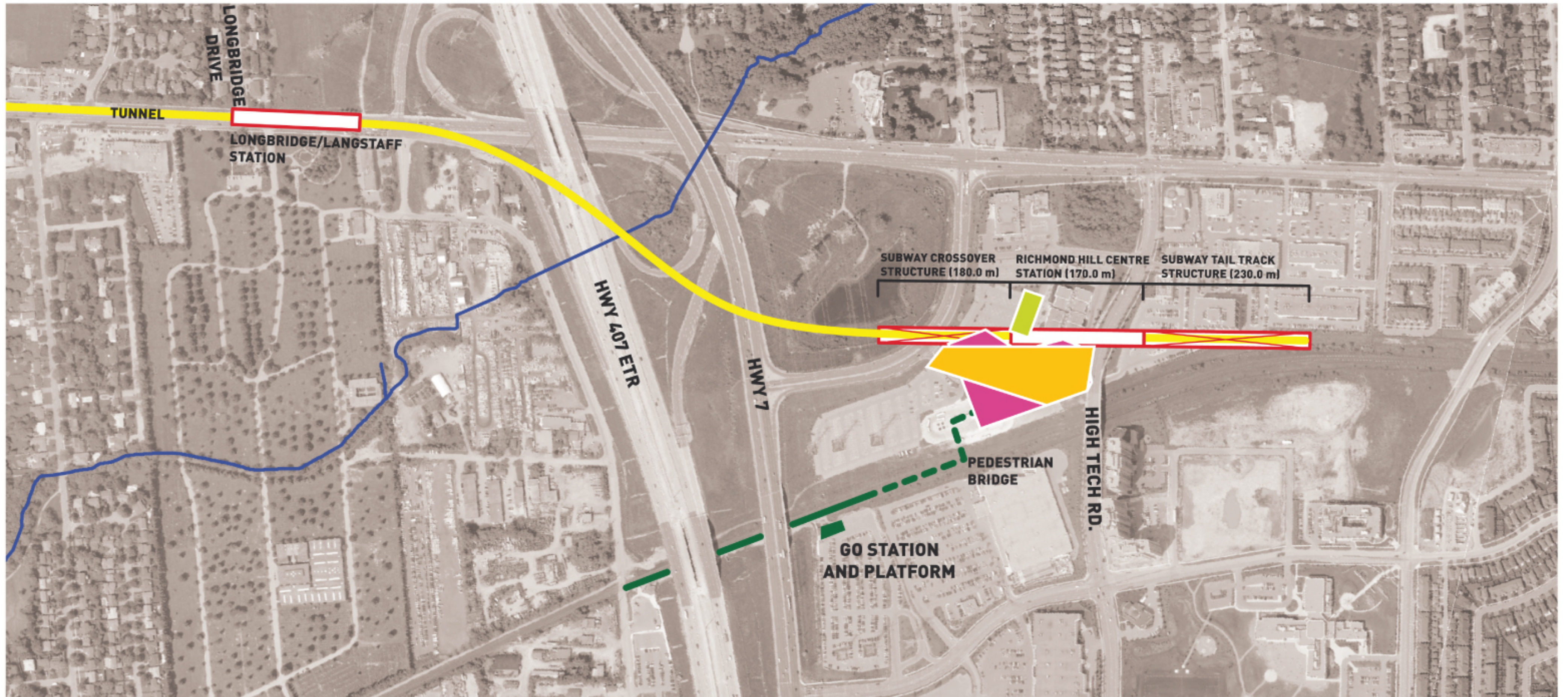
- bus terminal
- 407 transitway station
- passenger pick-up and drop-off [ppudo]



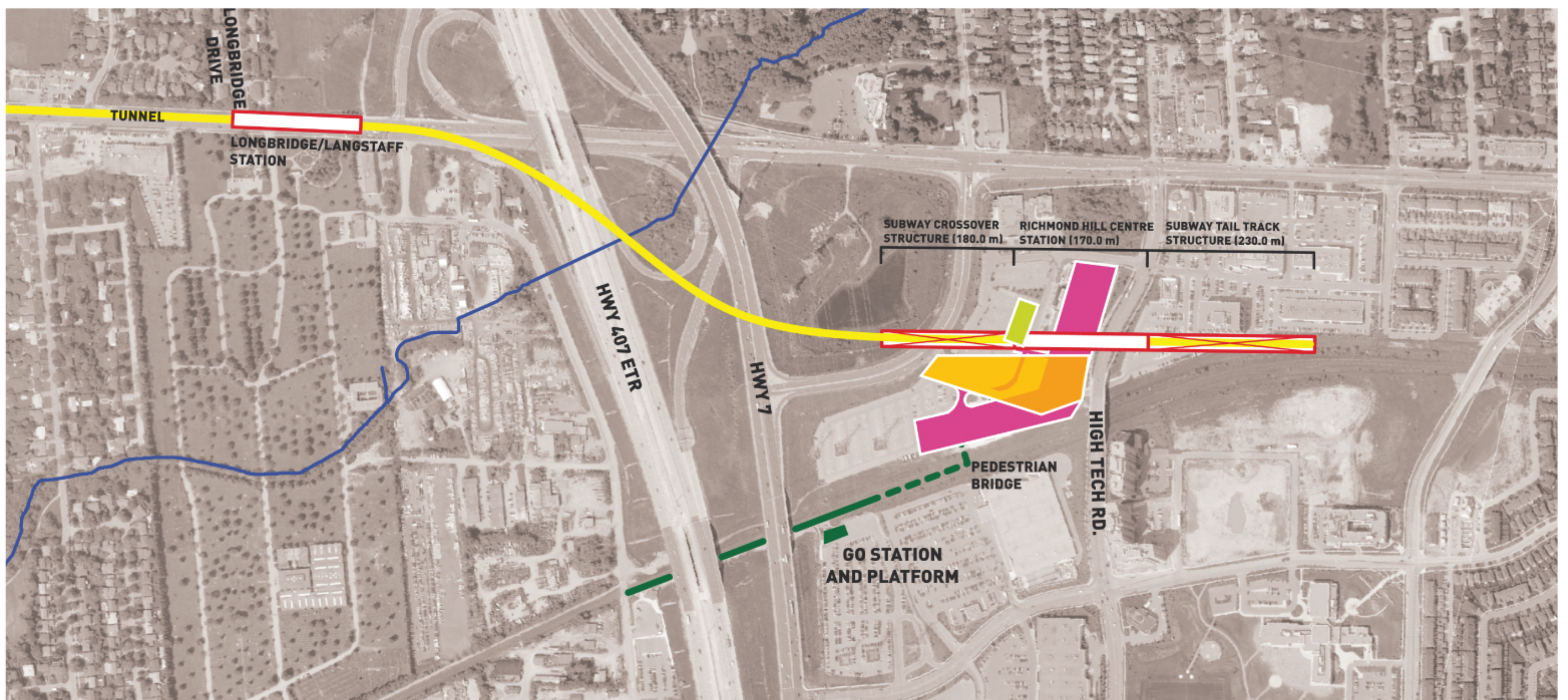
# richmond hill centre station facilities

## alignment c

### stacked bus terminal



### bus terminal at grade



#### legend

- bus terminal
- 407 transitway station
- passenger pick-up and drop-off [ppudo]