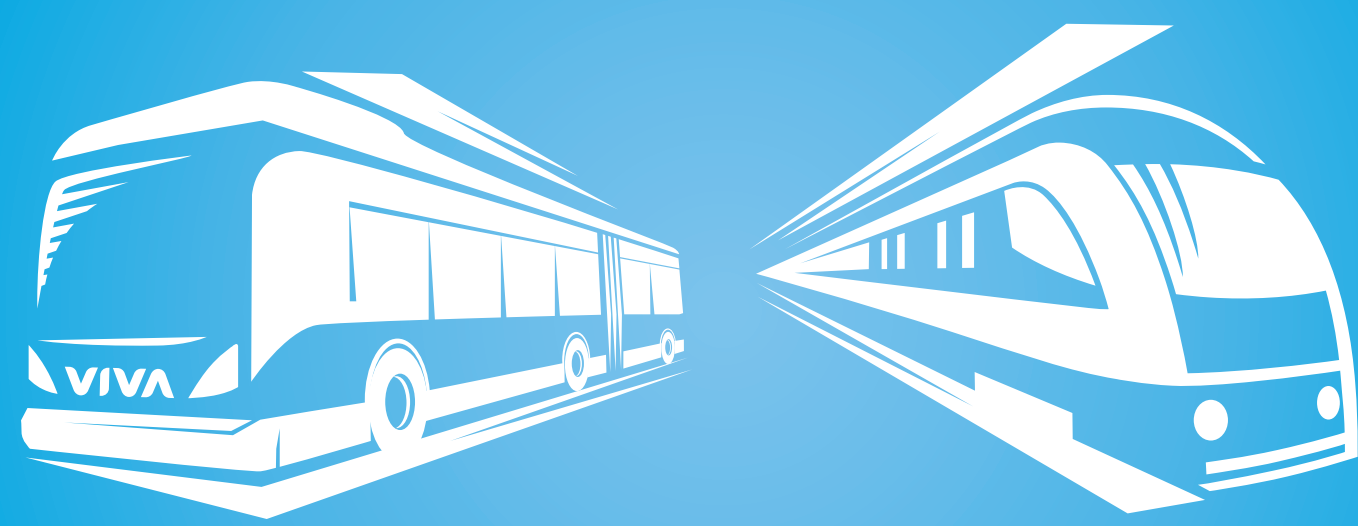




yonge street subway presentation 7pm



**VIVA**next

# what's old is new again

Prior to 1877 – Horse-drawn stagecoach service ran north on Yonge Street to Richmond Hill

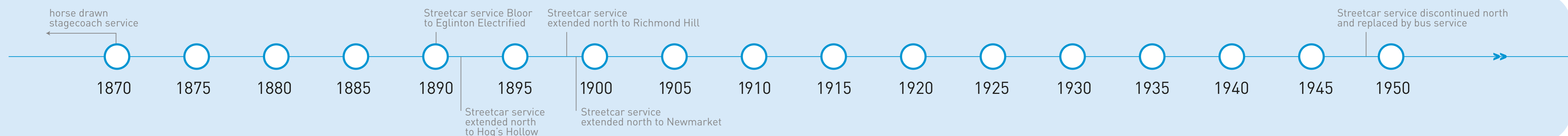
1890 – Streetcar service on Yonge Street from just north of Bloor Street to Eglinton Avenue electrified

1892 – Electric streetcar service extended north on Yonge Street to southern brow of Hogg's Hollow

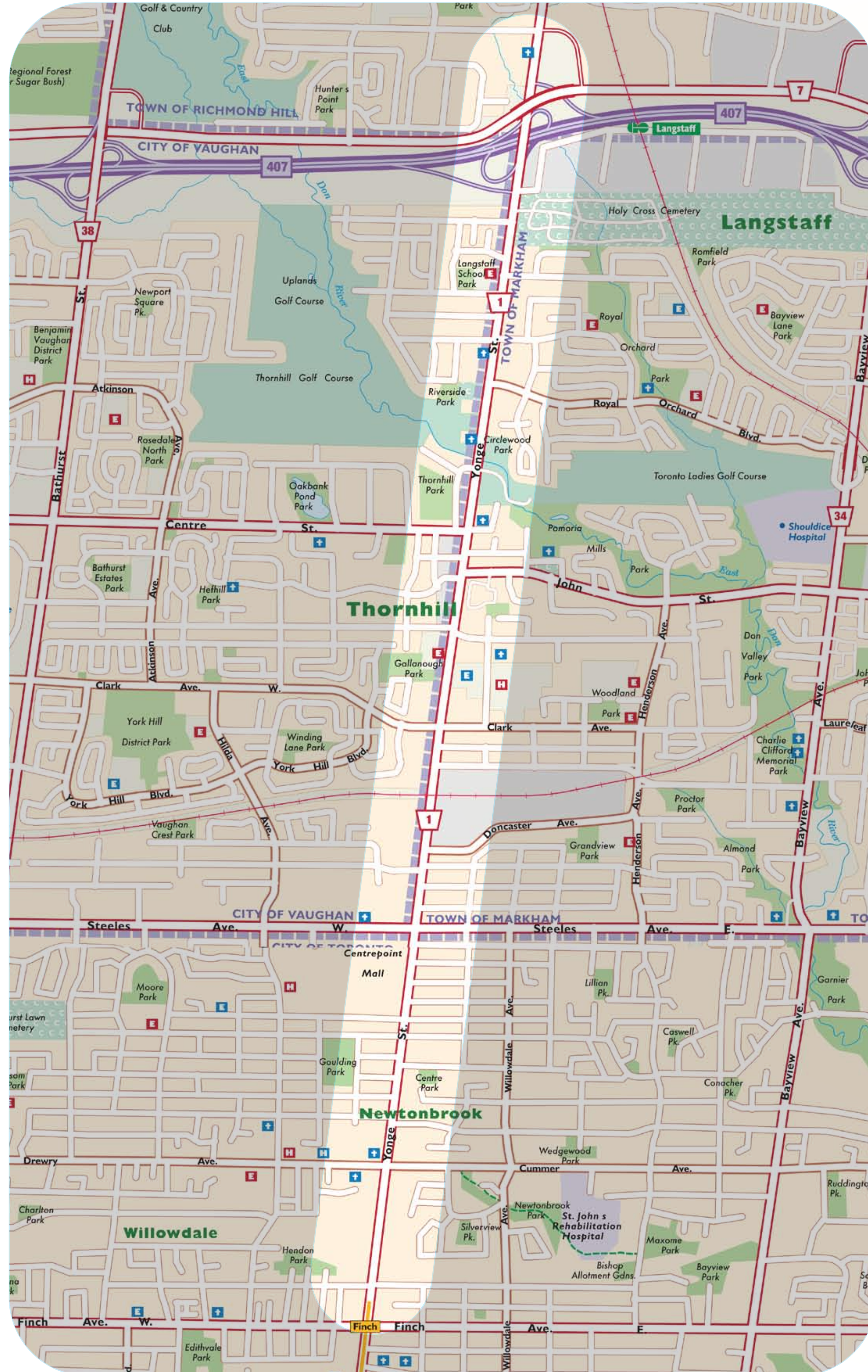
1897 – Electric streetcar service extended north on Yonge Street to Richmond Hill

1899 – Electric streetcar service extended north on Yonge Street to Newmarket

1948 – Electric streetcar service discontinued north on Yonge Street from Glen Echo Road and replaced by bus service



# what is the yonge street subway extension?



➤ A 6-kilometre extension of the Yonge subway line from Finch to Highway 7

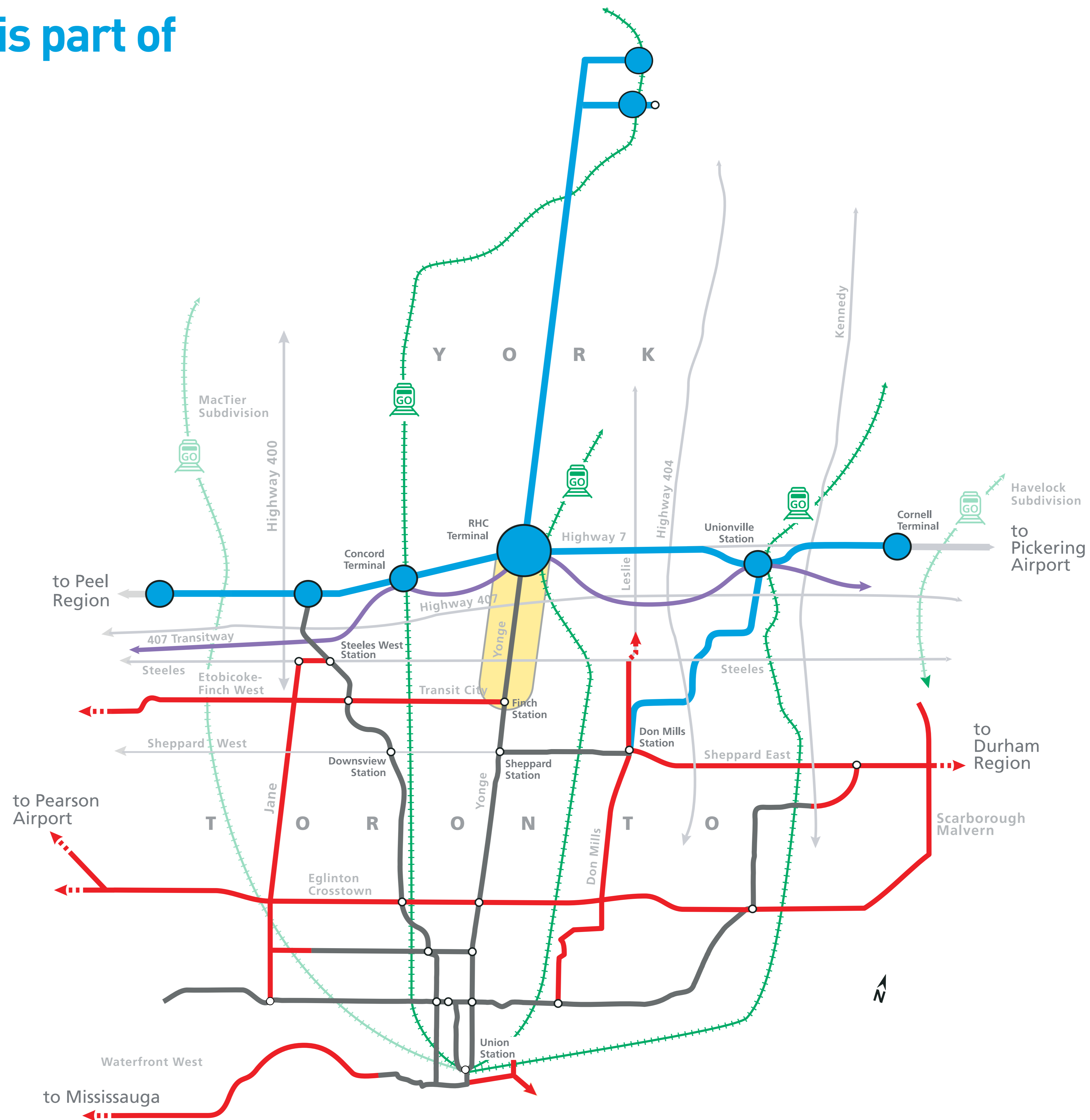
# what are we studying?

This study will identify the options for the future Yonge Street Subway extension, including:

- > Numbers and locations of stations
- > How the subway will cross the East Don River
- > The location of the terminus of the subway at Highway 7, its features and how it works



# the yonge subway extension is part of a GTA-wide transit system



**VIVA**  
Viva Rapid Transit

**TORONTO**  
Toronto Transit City  
Light Rail Plan

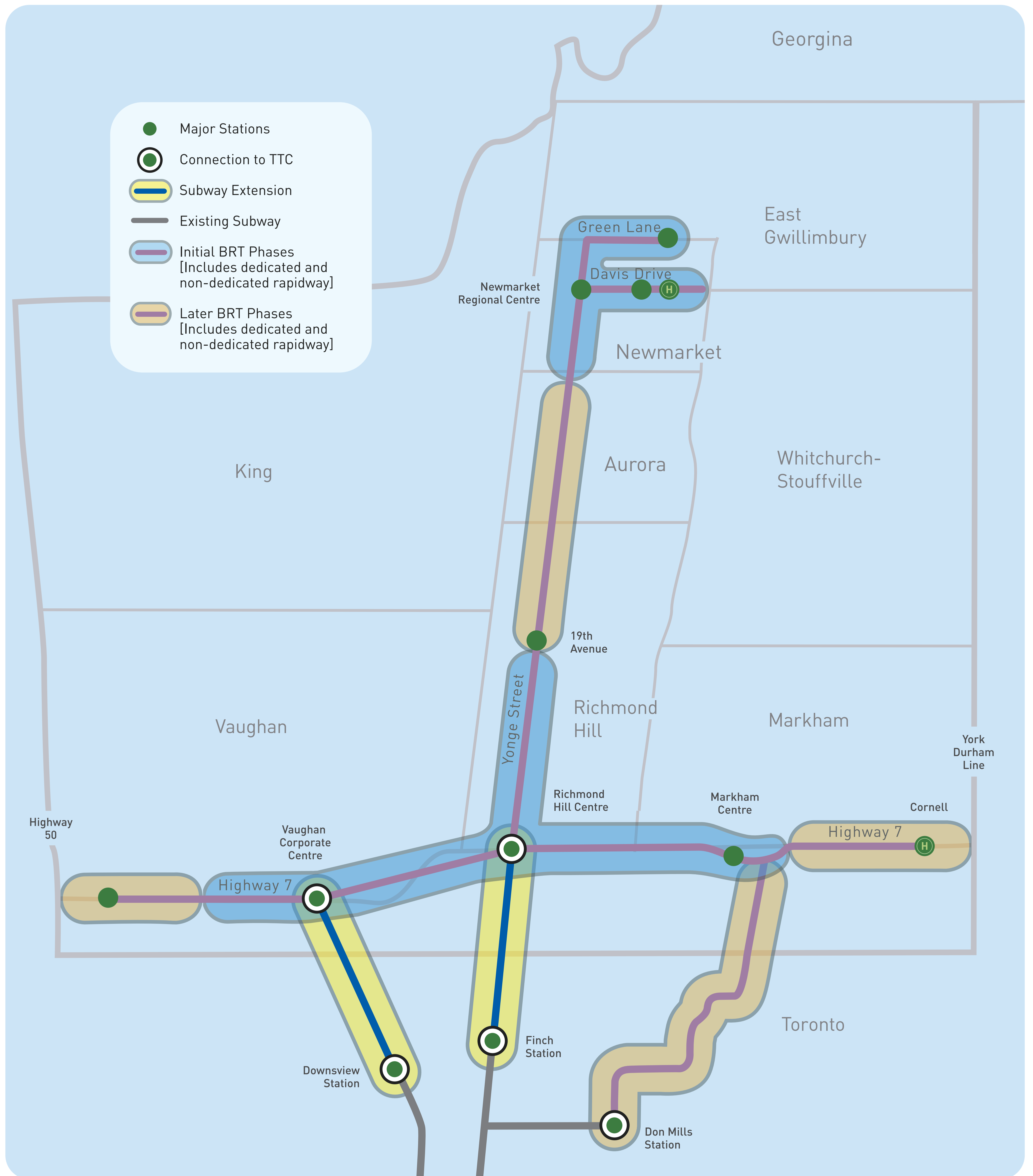
**GO**  
GO Transit

**BRAMPTON** Transit

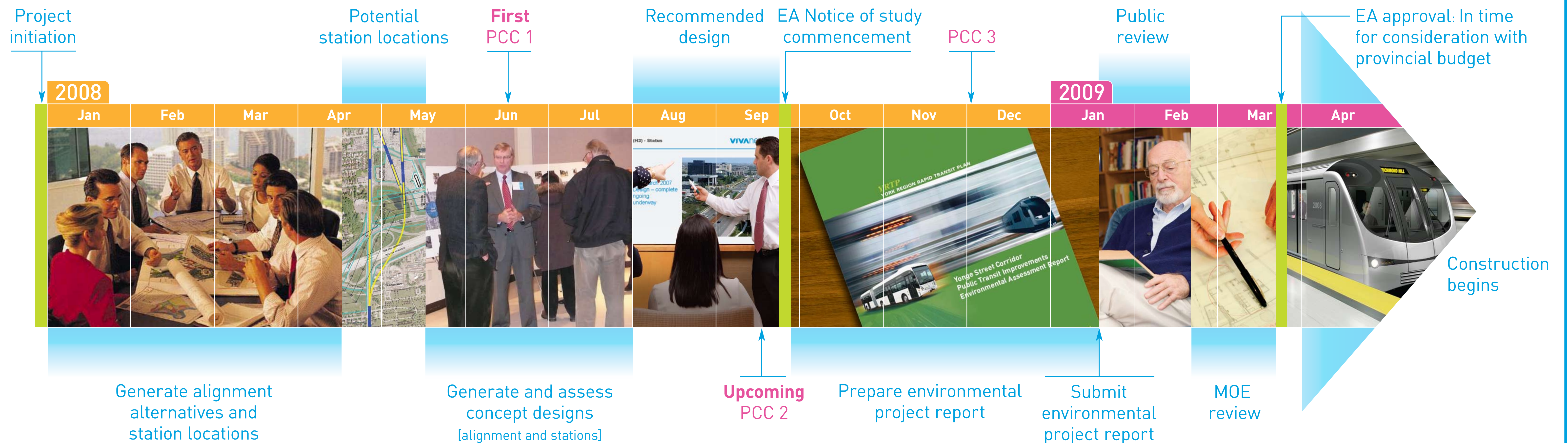
**YORK**  
REGION  
TRANSIT

**DurhamRegion**  
Transit

# vivaNext route map



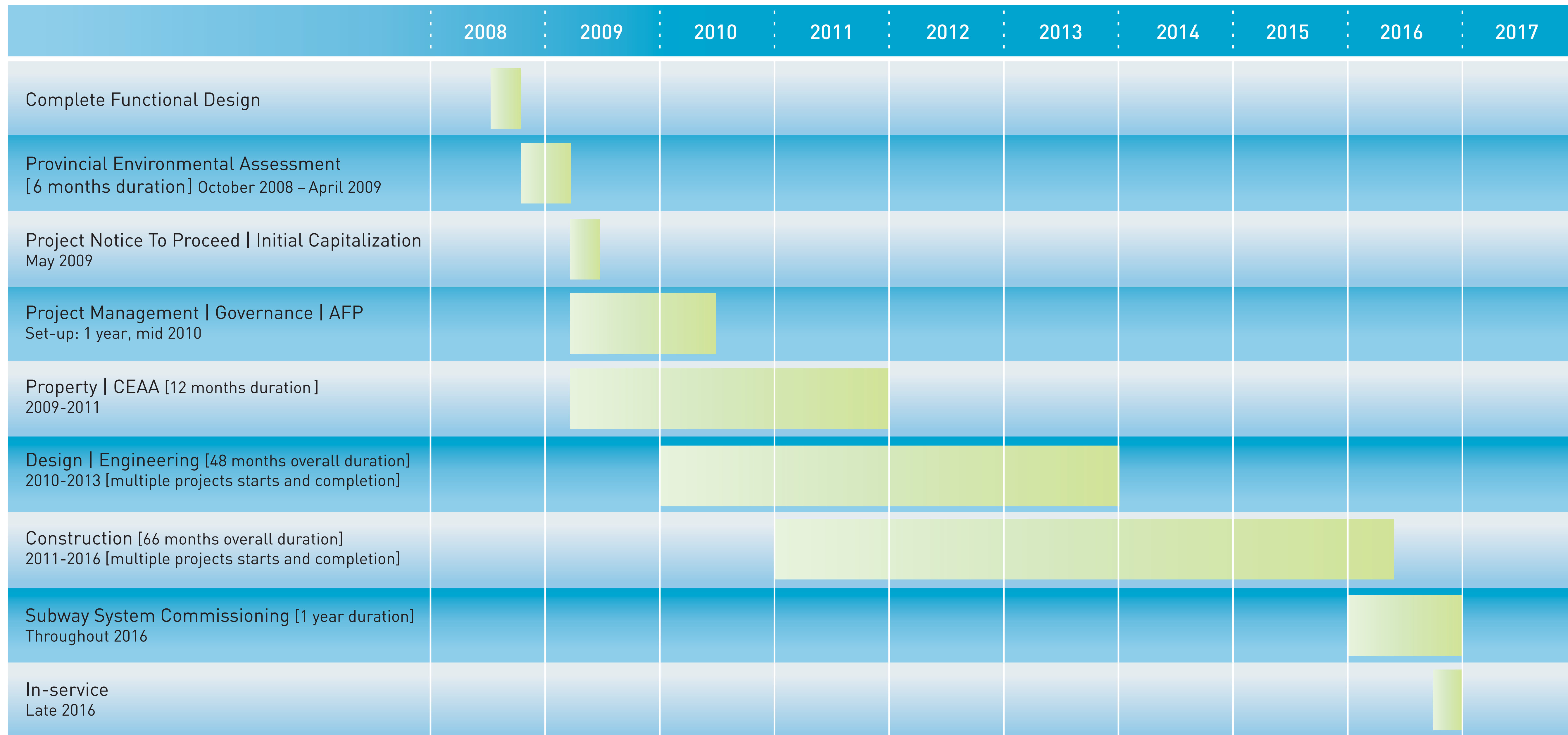
# the study needs your input...



## be involved

- > summer stakeholder workshop: july 31 and august 26
- > public consultation centre 2: september 25
- > public consultation centre 3: late november

# what are the major phases of planning and building a subway?

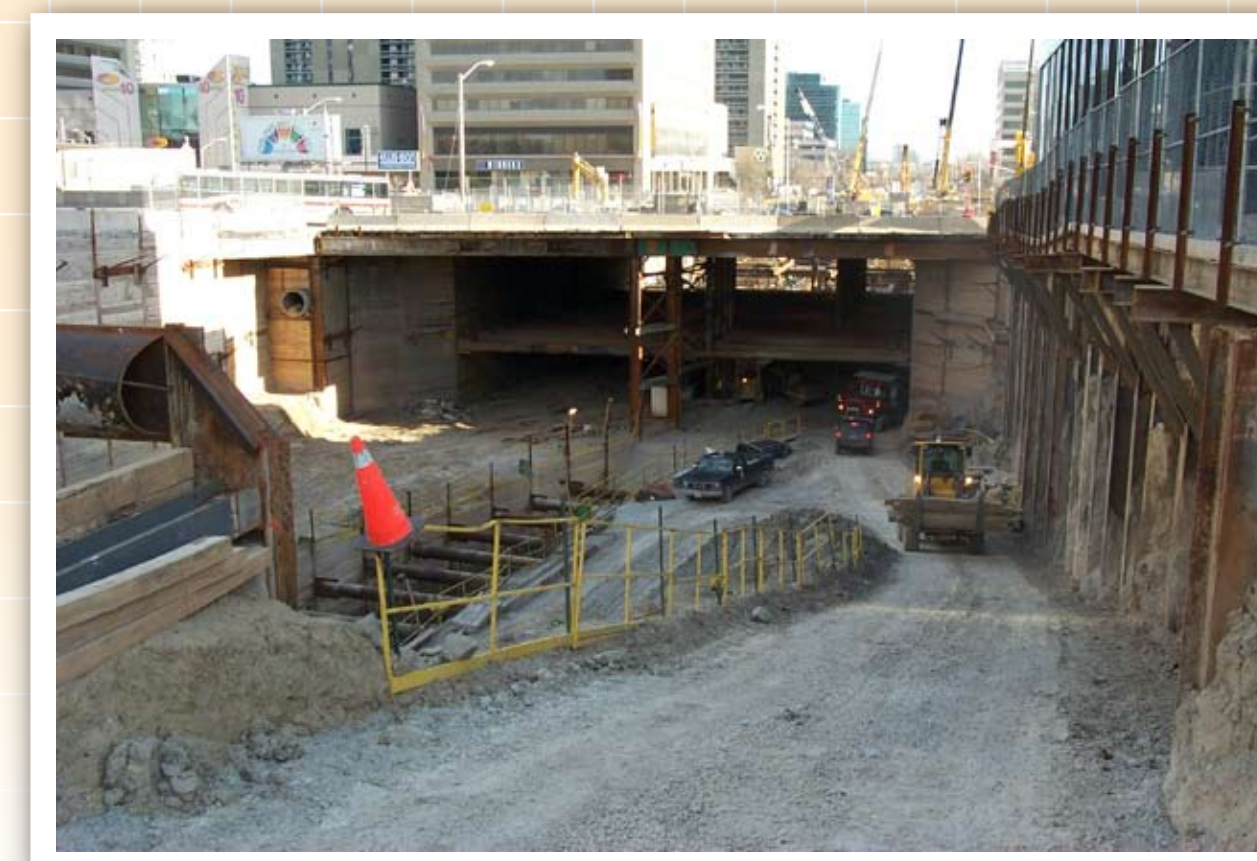
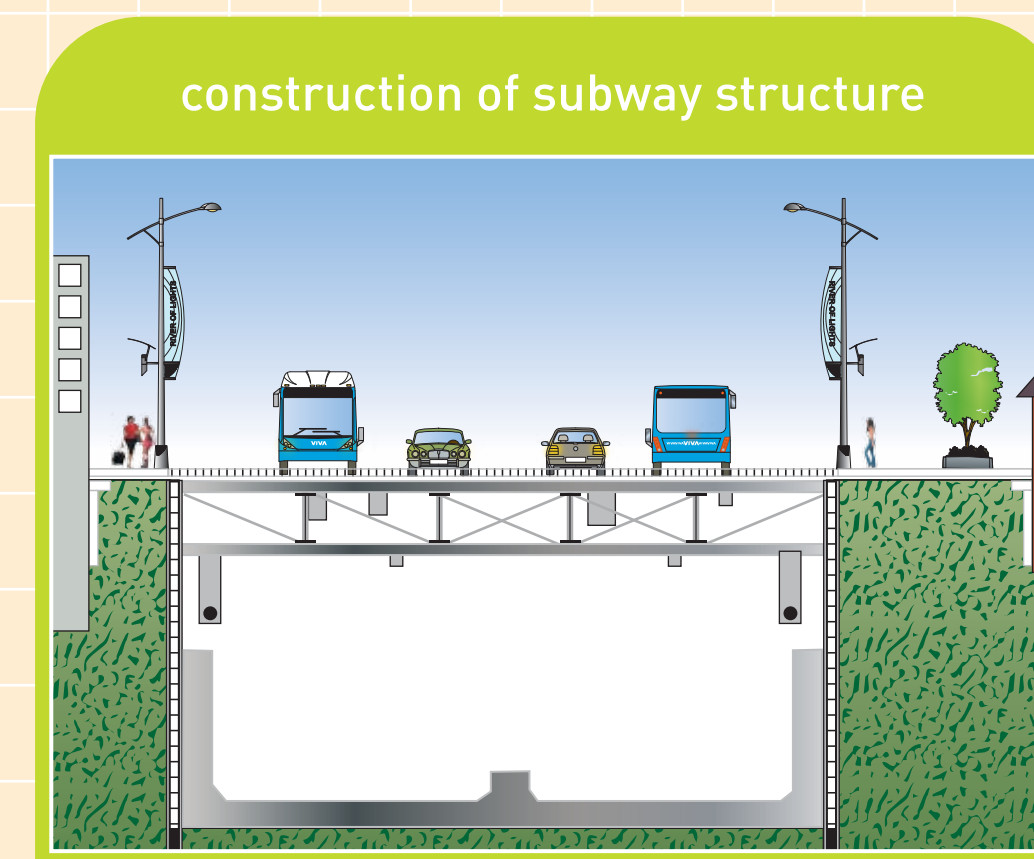
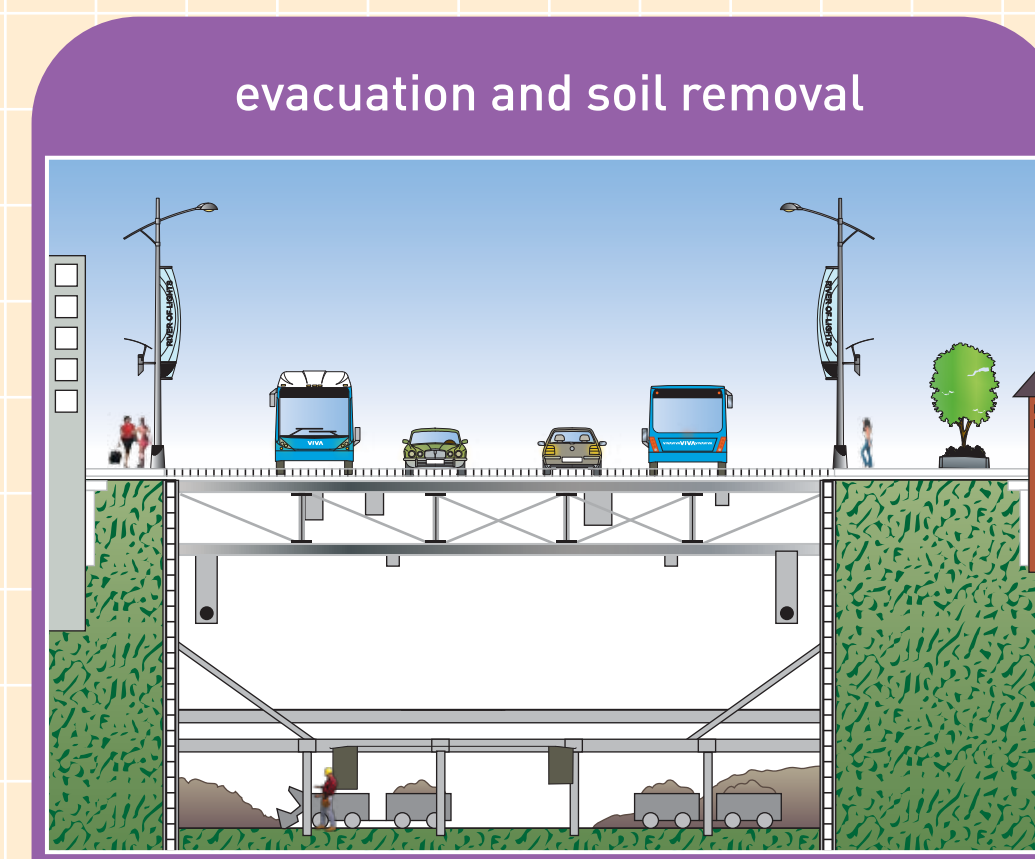
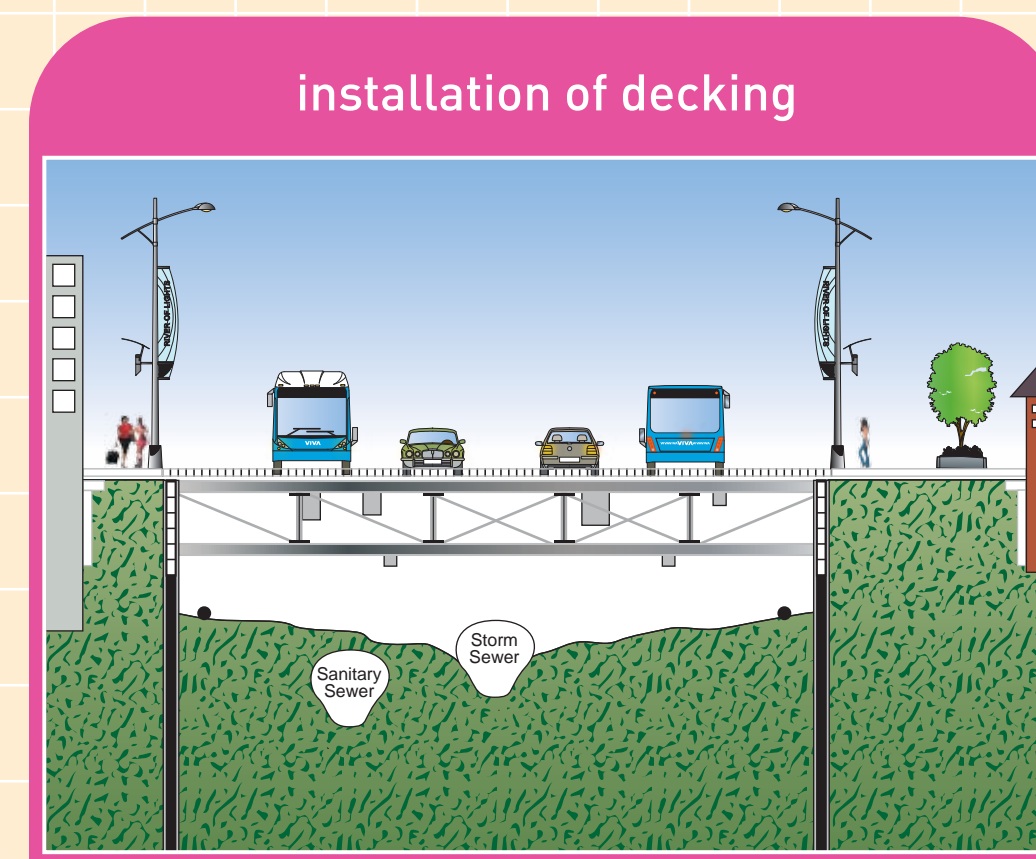
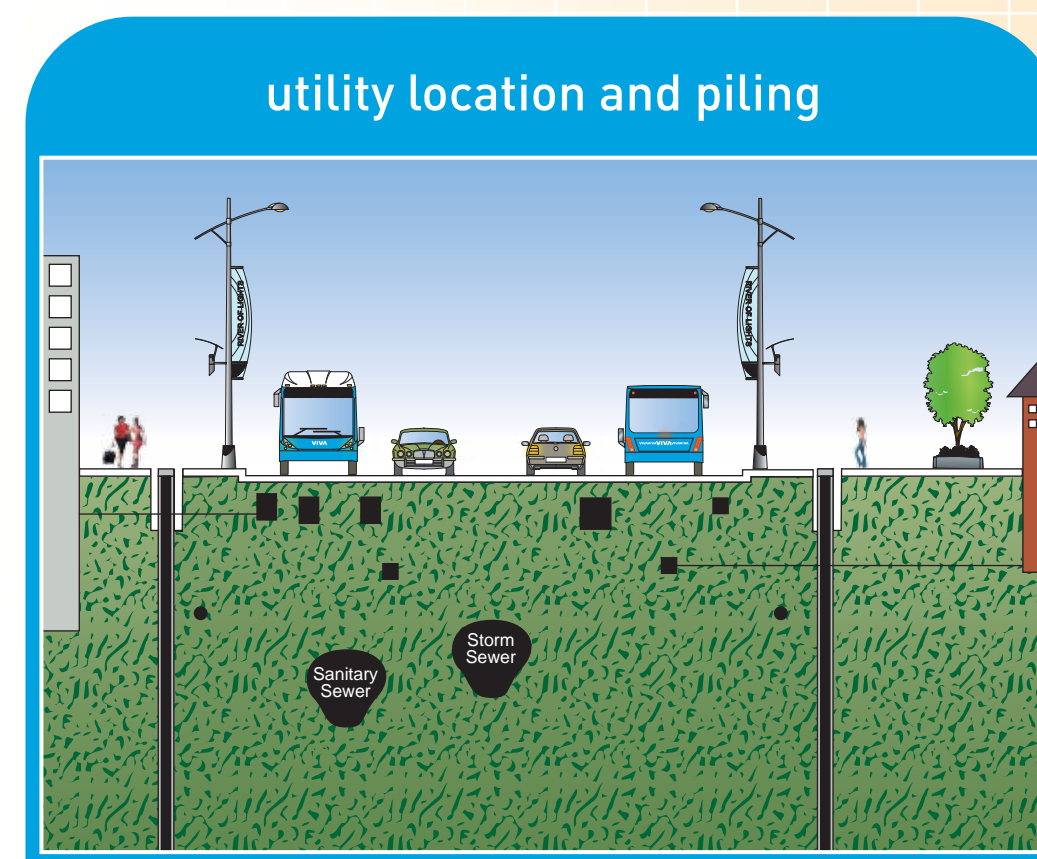
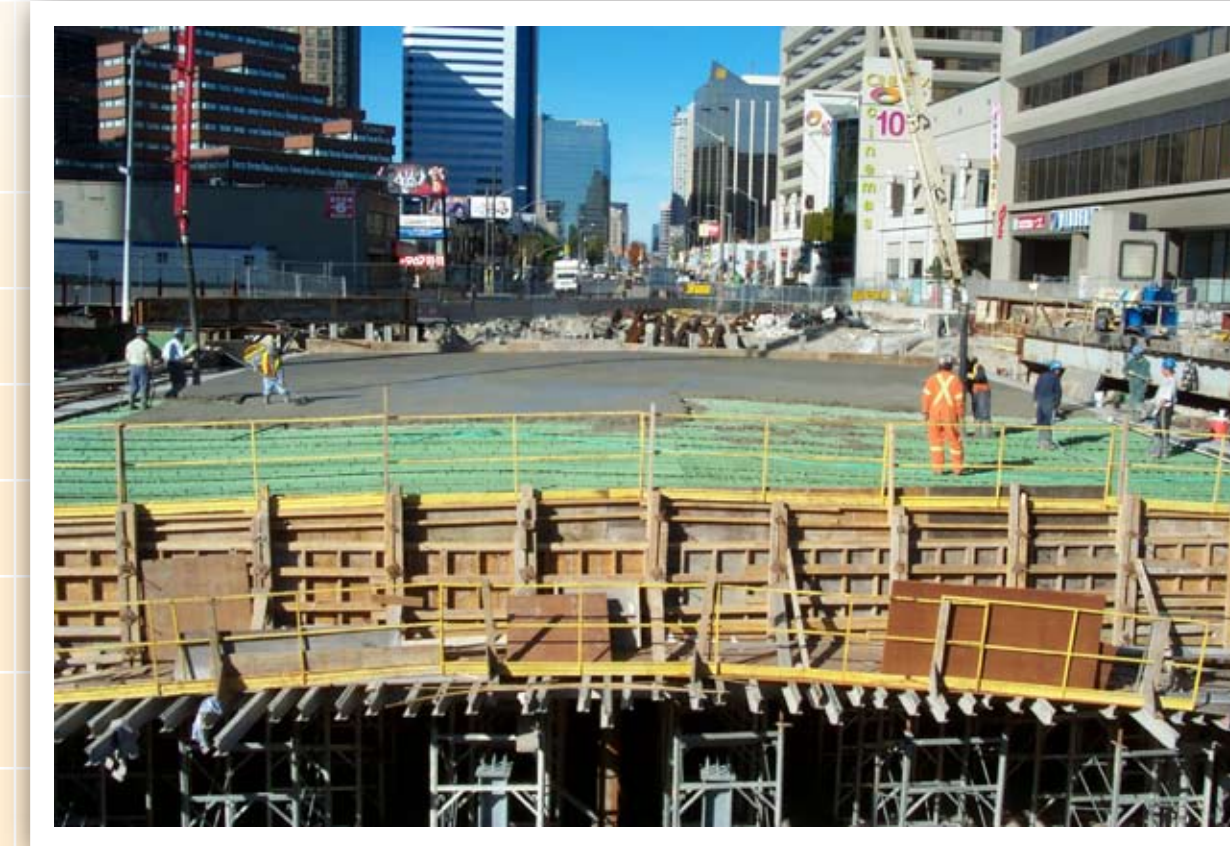
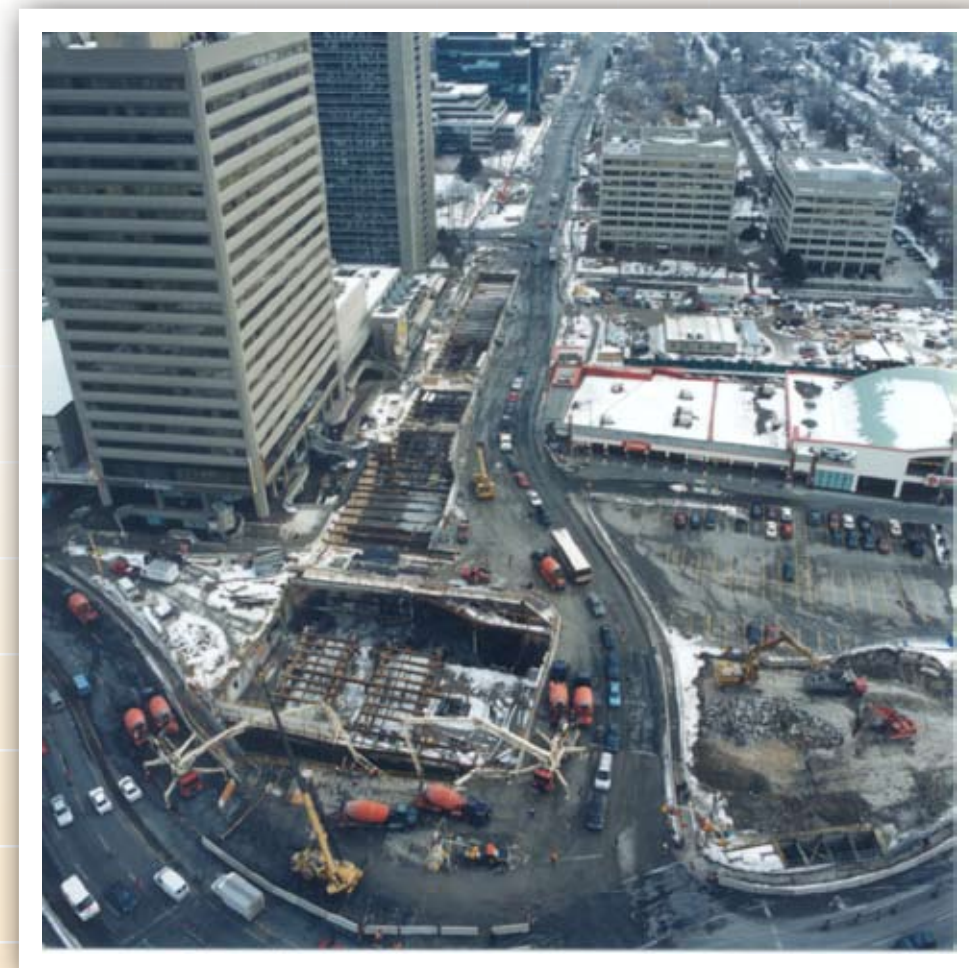


## key targets

- > project begins: 2009
- > design/engineering: 2009
- > construction: 2011
- > open: 2016



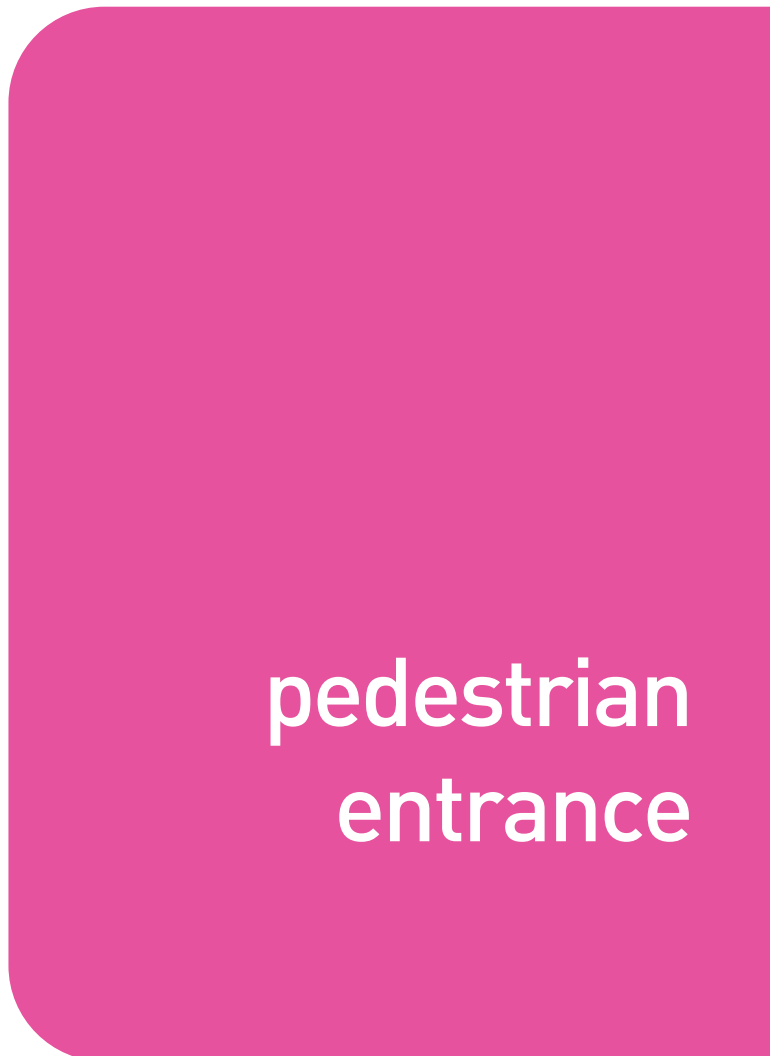
# here's how a subway is built



# what comes with a subway?



passenger  
pick up and  
drop off



pedestrian  
entrance



bus  
terminal



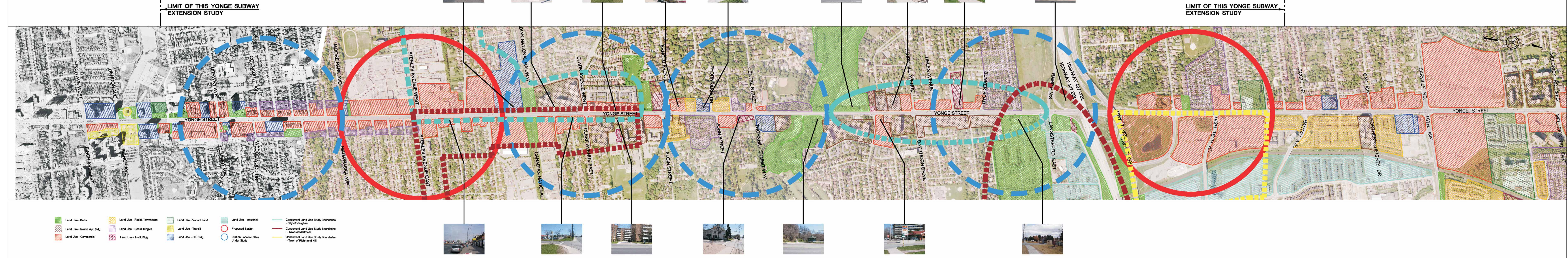
parking  
facility



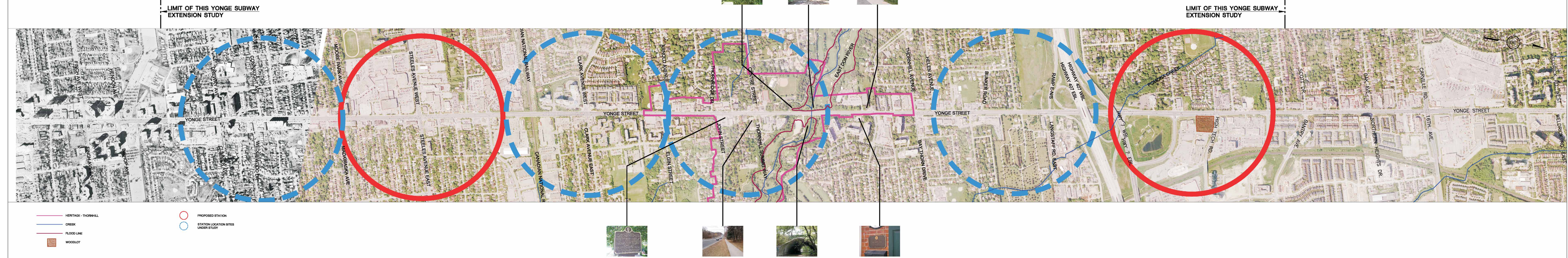
substations

# what is happening in the community?

## Land Use



## Cultural, Heritage and Natural



# what's important when planning a subway?

Vote for your top three priorities

- 1 most important
- 2 second most important
- 3 third most important



## Connections to other transit

Successful rapid transit connects people easily to other modes of transit.



## Places to go

Stations should be located near places that people want to go to, e.g. shopping, entertainment, recreation.



## Sensitive to local environment

Stations should respect their local environment, such as heritage buildings, natural features and other significant local attractions.



## Station amenities and design

Carefully-designed stations should have the right amenities to give you a great transit experience.

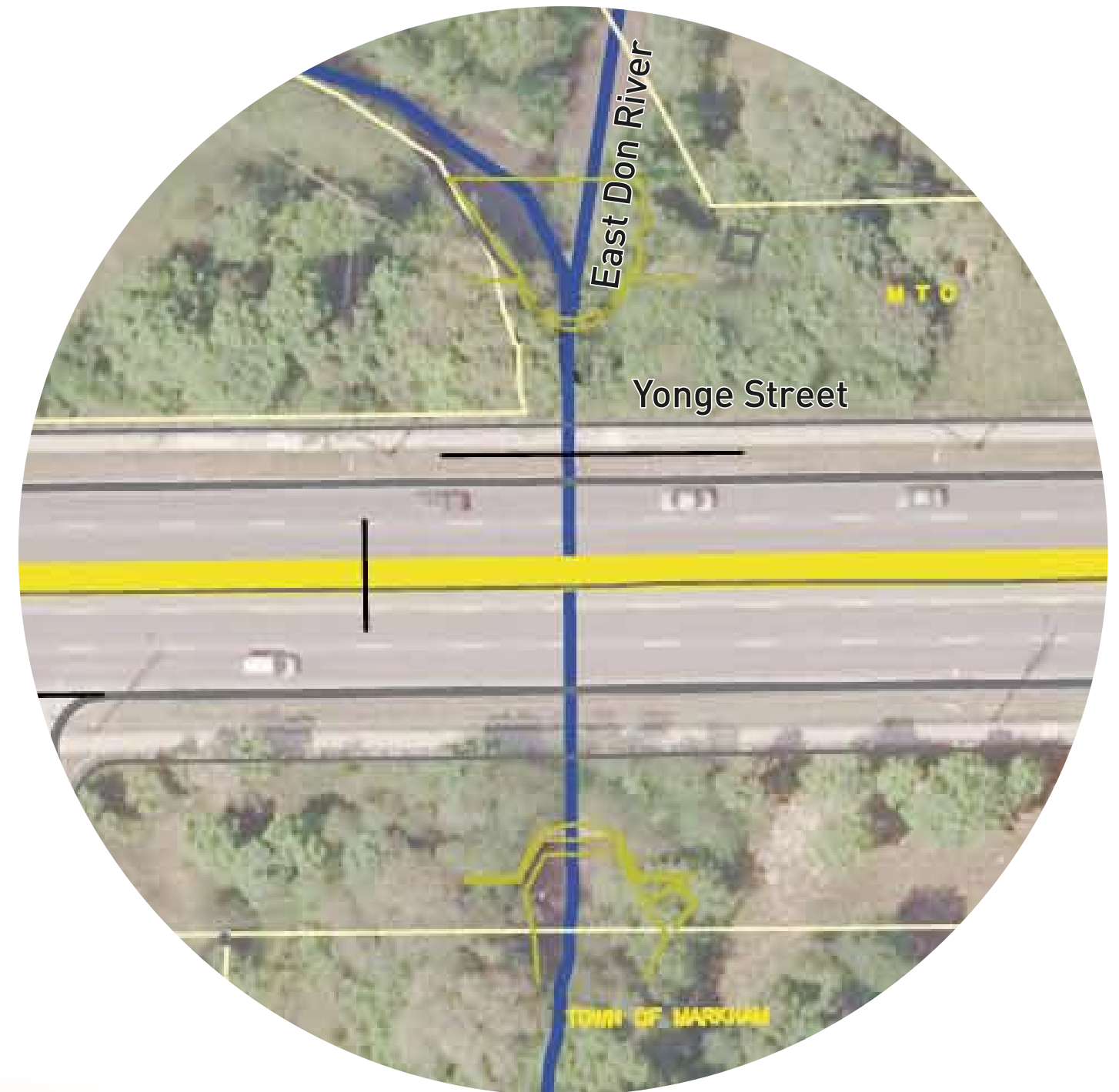


## Planning

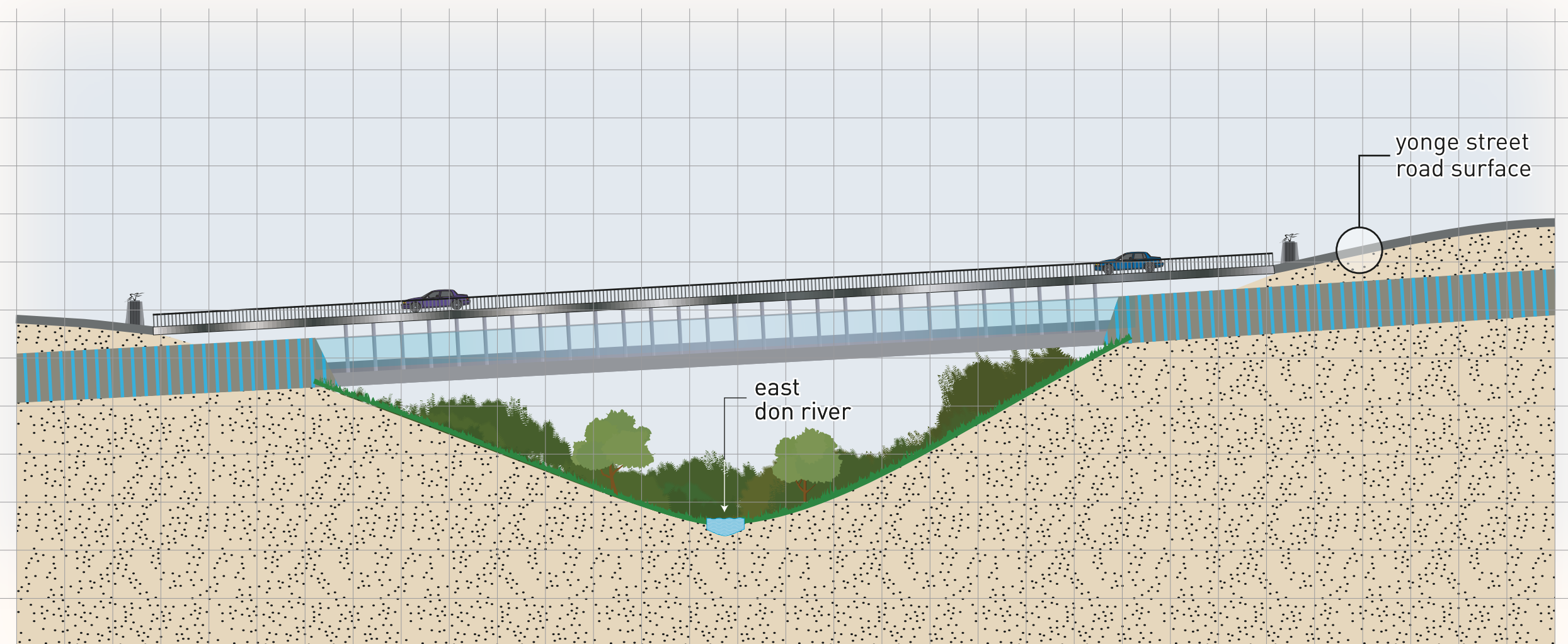
Careful planning of existing neighbourhoods and future growth.

# how should we cross the east don river?

cross section: yonge street [west view of east don river]



## option 1 | bridge

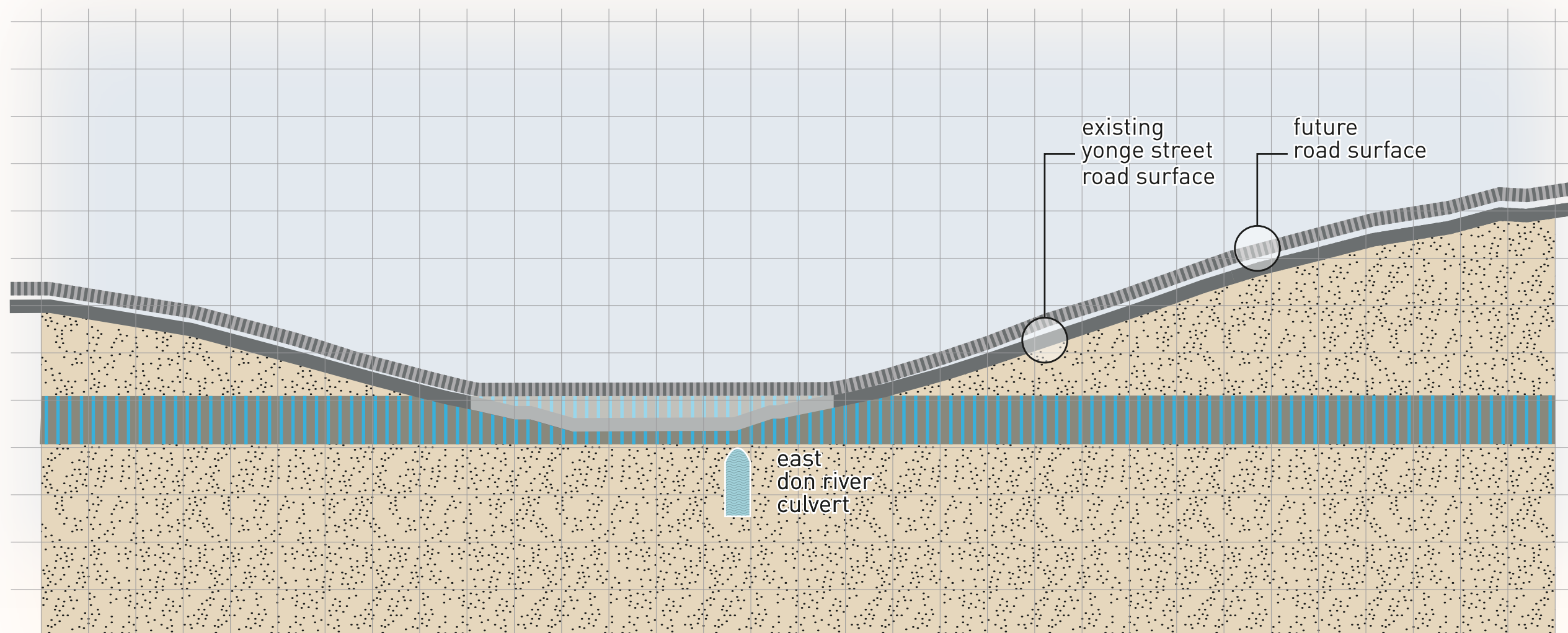


subway under bridge road surface

### considerations

- > naturalize the valley
- > visual appearance of the bridge
- > elimination of the road down and up the slope
- > access to valley
- > allows for shallow subway stations

## option 2 | above the river, under the road

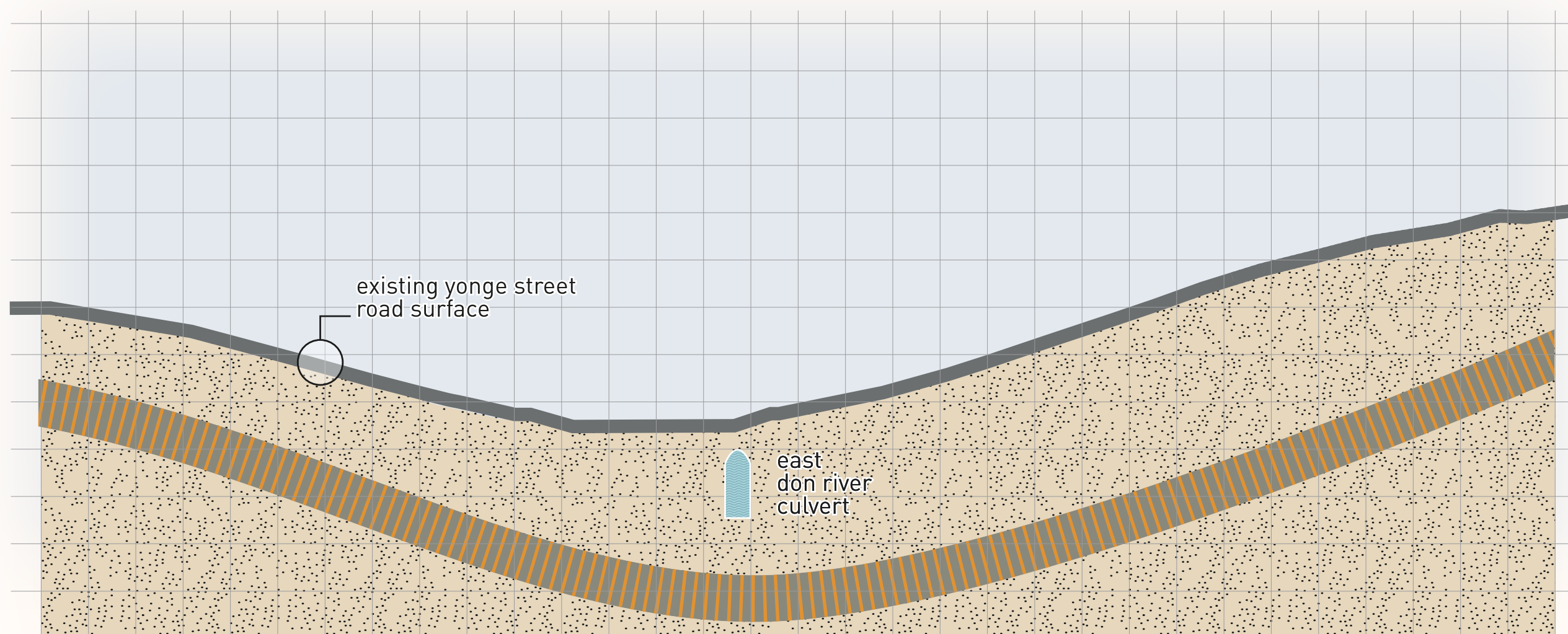


subway above existing road surface future road surface

### considerations

- > visual appearance in valley
- > modest change to road slope
- > modest change in access to valley
- > allows for shallow subway stations

## option 3 | under the river

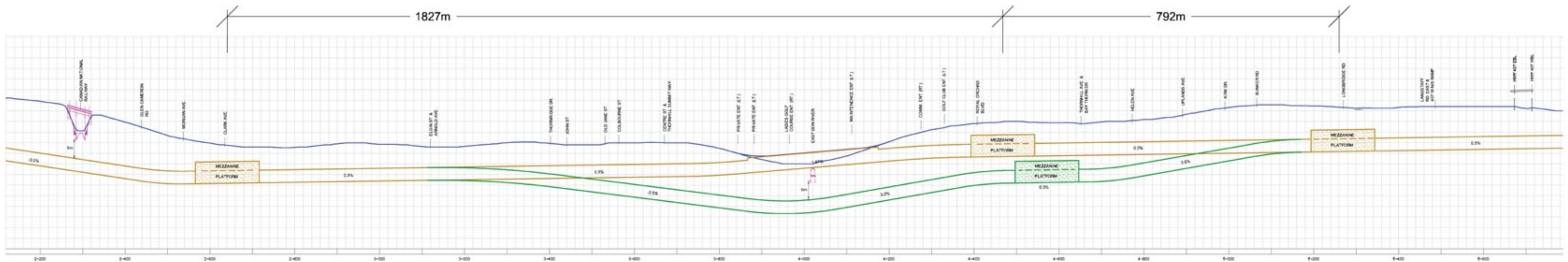
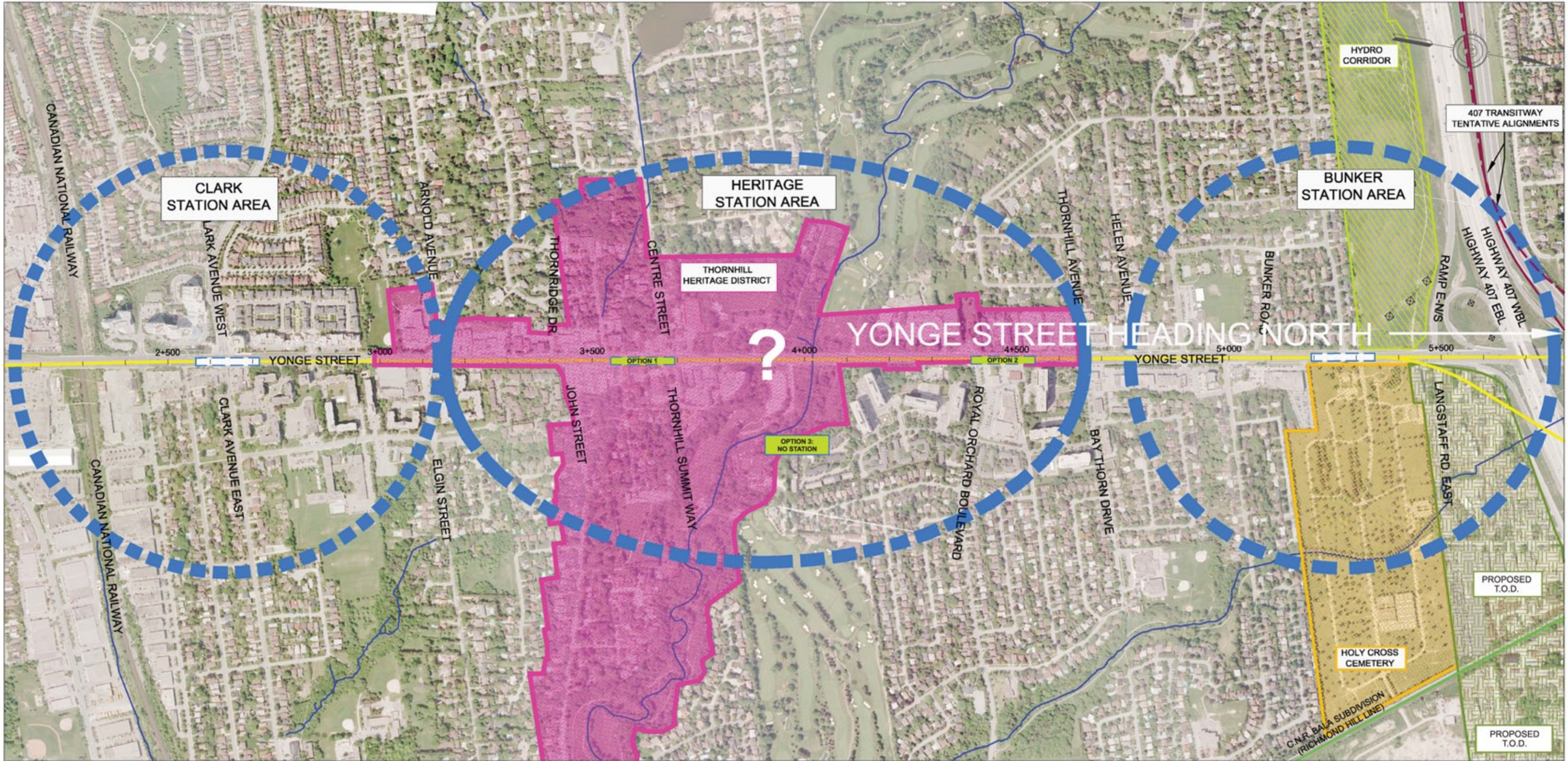


tunnel below

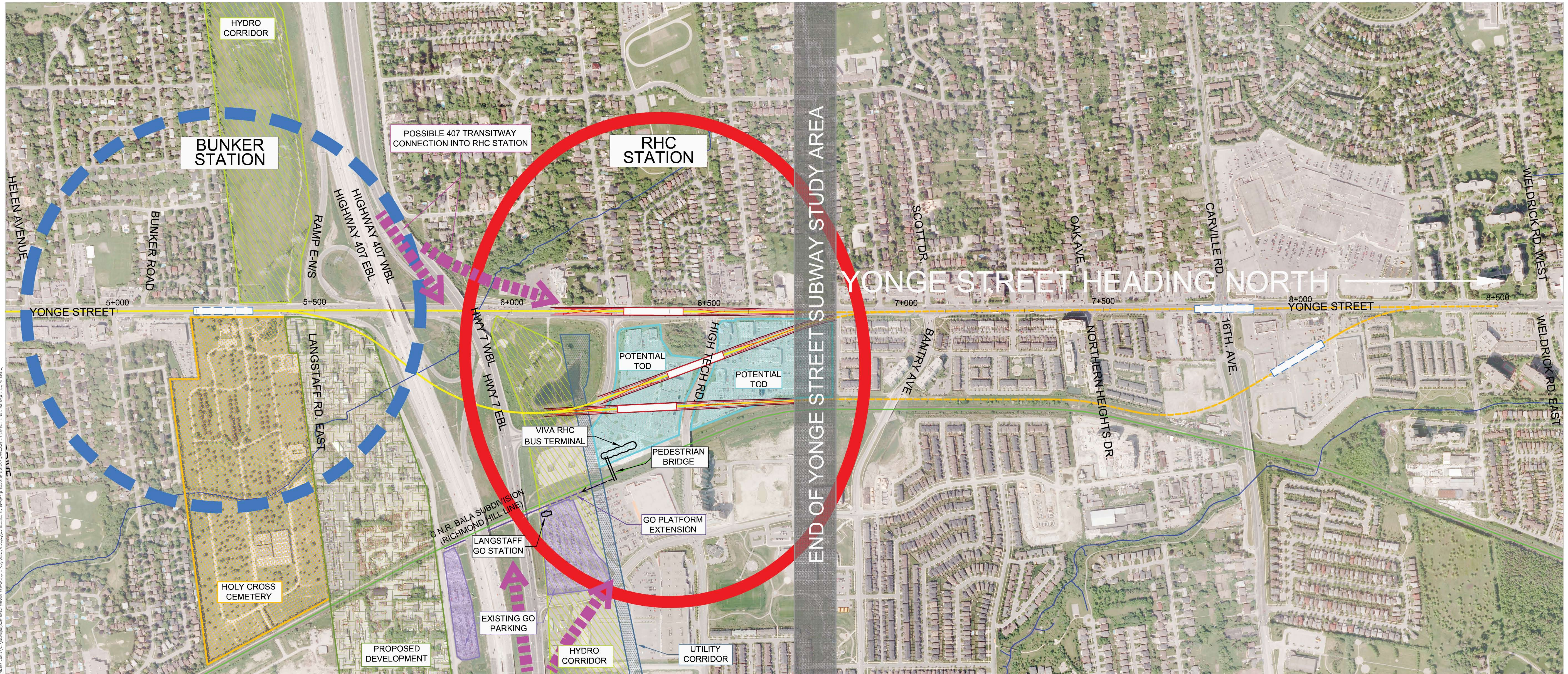
### considerations

- > no change to valley or road
- > deep subway stations
- > effect on access and emergency exit

# stations in the heritage area what are our options?



# yonge street subway extension alternative alignments at richmond hill centre



# what's important in planning the richmond hill center station?

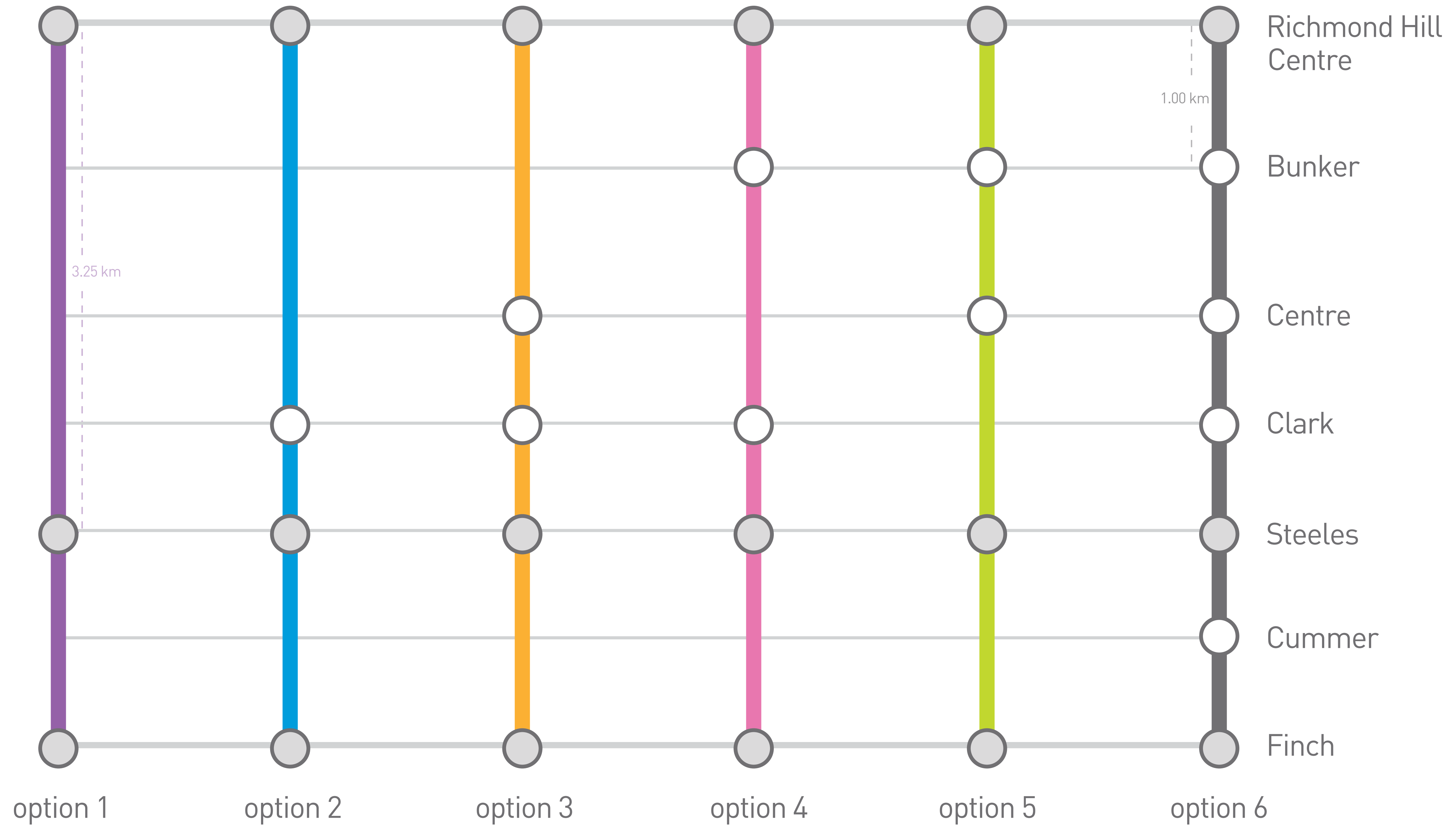
At Richmond Hill Centre, several transit services will provide great connectivity to York Region and beyond.

- > Convenient pedestrian access
- > All transit services [GO, Viva, subway, YRT etc.] close together to minimize transfer times
- > Year-round protection from the weather
- > Station amenities such as coffee shops, seating areas, public washrooms
- > Shopping such as gift shops, clothing, accessories and food



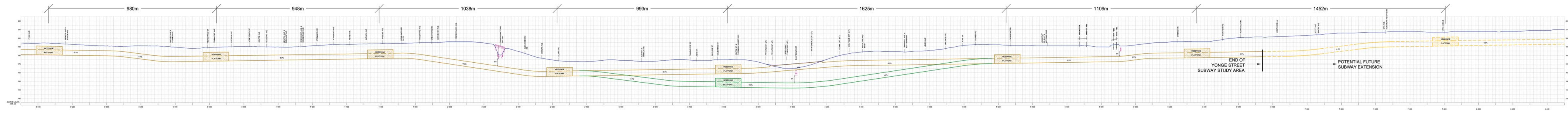
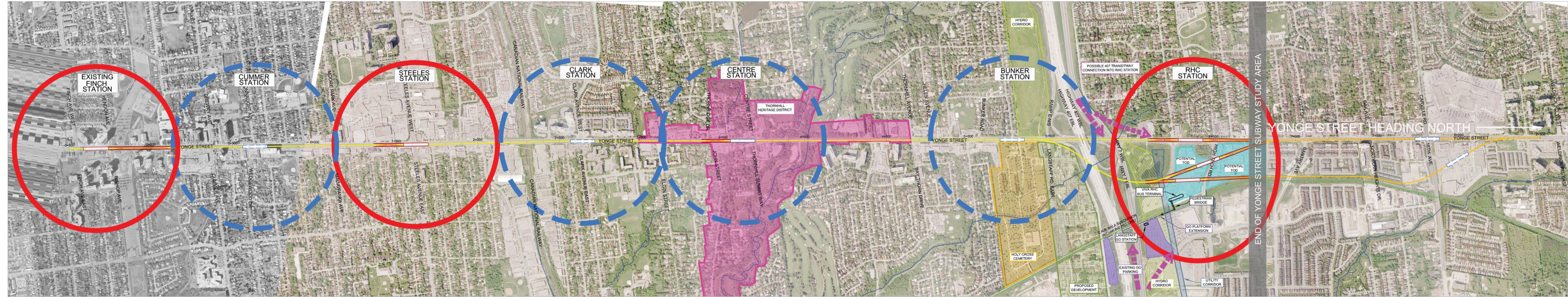


# how many stops should there be?



**station spacing**  
yonge subway extension: station alternatives

**yonge street subway extension**  
concept plan and profile



# thank you!



## **Your input is important and appreciated**

- > A recommended design will be ready for your comments  
September 25
- > The preferred design will undergo a six-month environmental  
assessment starting this fall
- > Your views and opinions matter to us. You can share your  
thoughts by:
  - Completing our brief survey today or online at [vivayork.com](http://vivayork.com)
  - Signing up for a summer workshop July 31