

shaping our communities in vaughan

The vivaNext rapidway will:

- complement and enhance our community along the route.
- help shape successful urban growth.
- encourage building attractive, pedestrian-friendly places for people to live, work, shop and play.
- we have worked closely with City of Vaughan planners to ensure rapid transit integrates with their growth strategies and community objectives.



how it all began

part of a big plan

To slow down suburban sprawl and lessen our reliance on cars, we need more choices in how to get around, and from this comes new ideas on how our communities should grow. In 2006, the **Province of Ontario** published Places to Grow: Growth Plan for the Greater Golden Horseshoe. This 25-year plan for managing growth aims to revitalize downtowns, curb sprawl and protect green spaces, and create complete communities with more options for life in general, including housing, work and transportation.

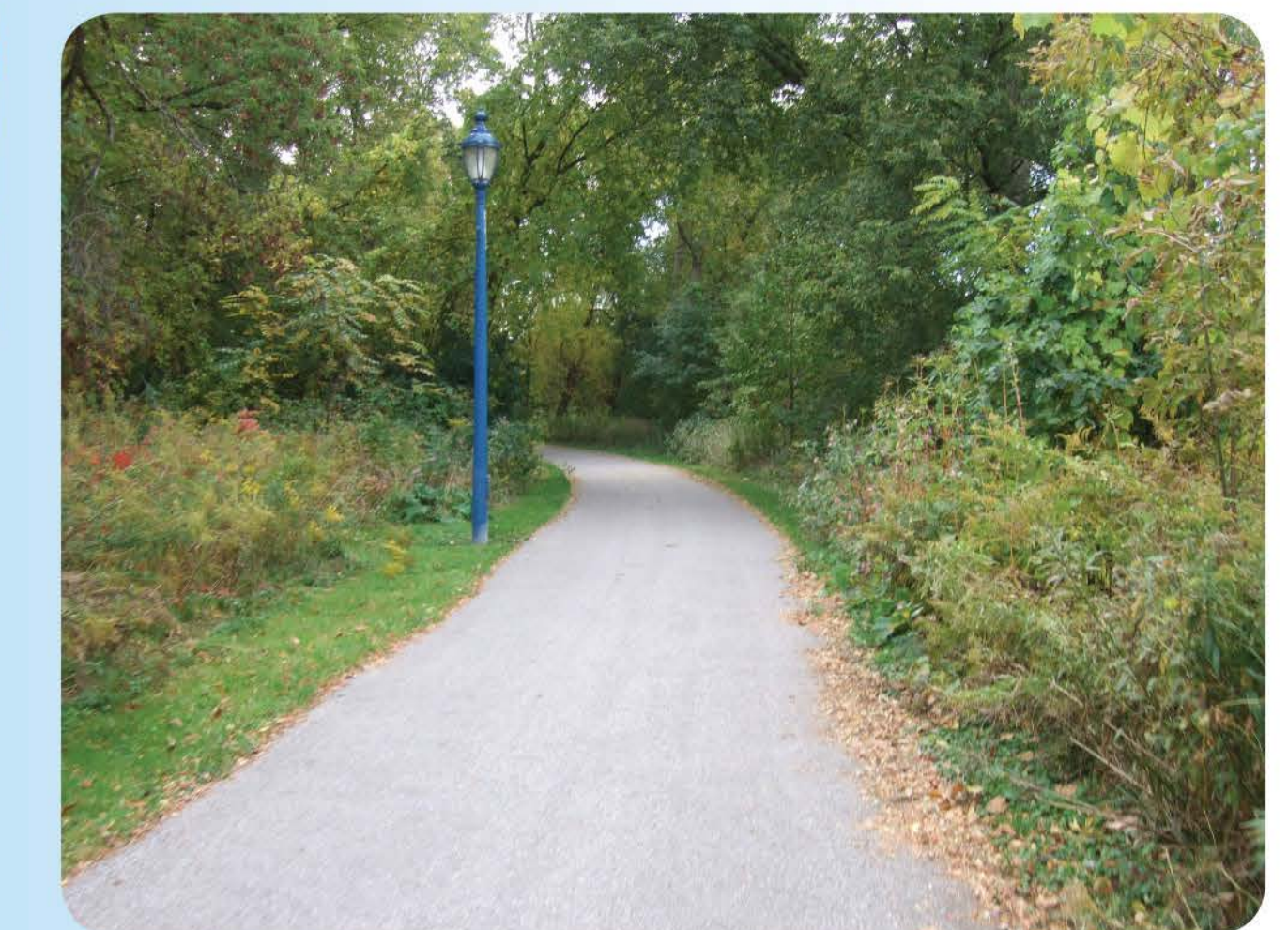
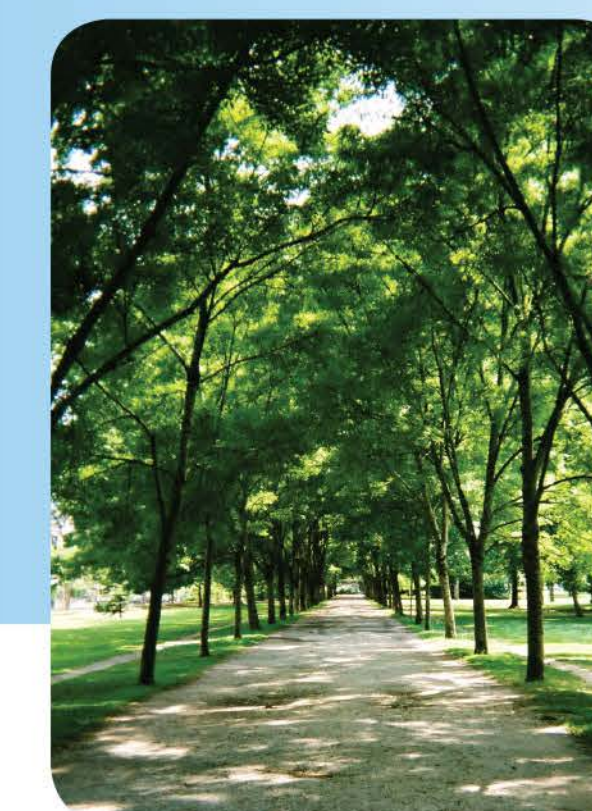
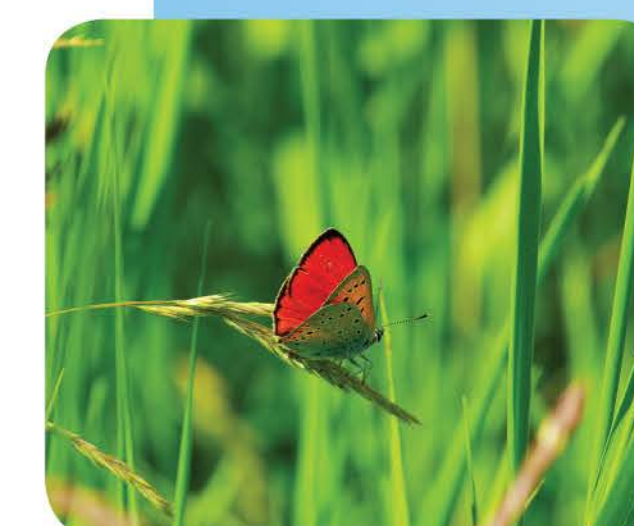
Metrolinx, an Ontario provincial agency, developed The Big Move: Transforming Transportation in the Greater Toronto and Hamilton Area in 2008. Metrolinx is funding transit projects like ours to expand, connect and improve transportation systems within and between GTHA regions.

York Region's Official Plan outlines a system of urban growth centres and corridors and is supported by Regional Transit-Oriented Development Guidelines. Two of the key urban growth centres identified are the Vaughan Metropolitan Centre area, and the Richmond Hill/Langstaff Gateway, near Highway 7 and Yonge Street. The Highway 7 West rapidway will connect these two urban centres and also connect to other modes of public transit, including subway.



environmental assessments

Once the vivaNext project plans were formed, Environmental Assessments [EA] began. Public consultation is a key part of an EA process. As part of the public consultation for Hwy 7 in Vaughan, YRRTC ensured interested parties were informed and involved, and were provided access to information and time to respond. We also encouraged interested parties to participate in identifying and resolving issues. We hosted four Public Consultation Centres in 2003 and 2004 to help guide the Highway 7 West project through the EA process, and we received approval of the EA from Ministry of the Environment in 2006. Since then, we've used newsletters, social media and public speaking opportunities to stay engaged with the community in Vaughan. We're looking forward to delivering the vivaNext plan in Vaughan.



vivaNext route map



part of a seamless GTA-wide transit network

- The Highway 7 West rapidway is part of the vivaNext plan to build a rapid transit network that connects York Region's urban centres and enriches our communities.
- The plan includes rapidways on Yonge Street, Davis Drive and Highway 7, as well as two subway extensions.



VIVA
Viva Rapid Transit



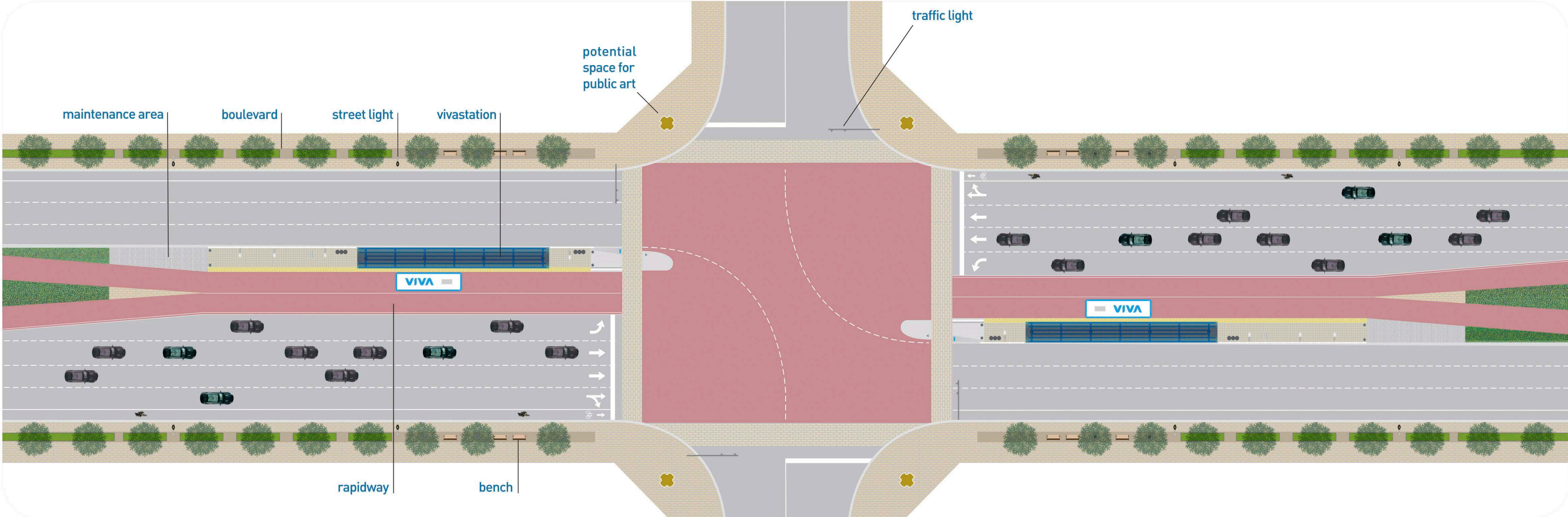
GO
GO Transit

**YORK
REGION
TRANSIT**

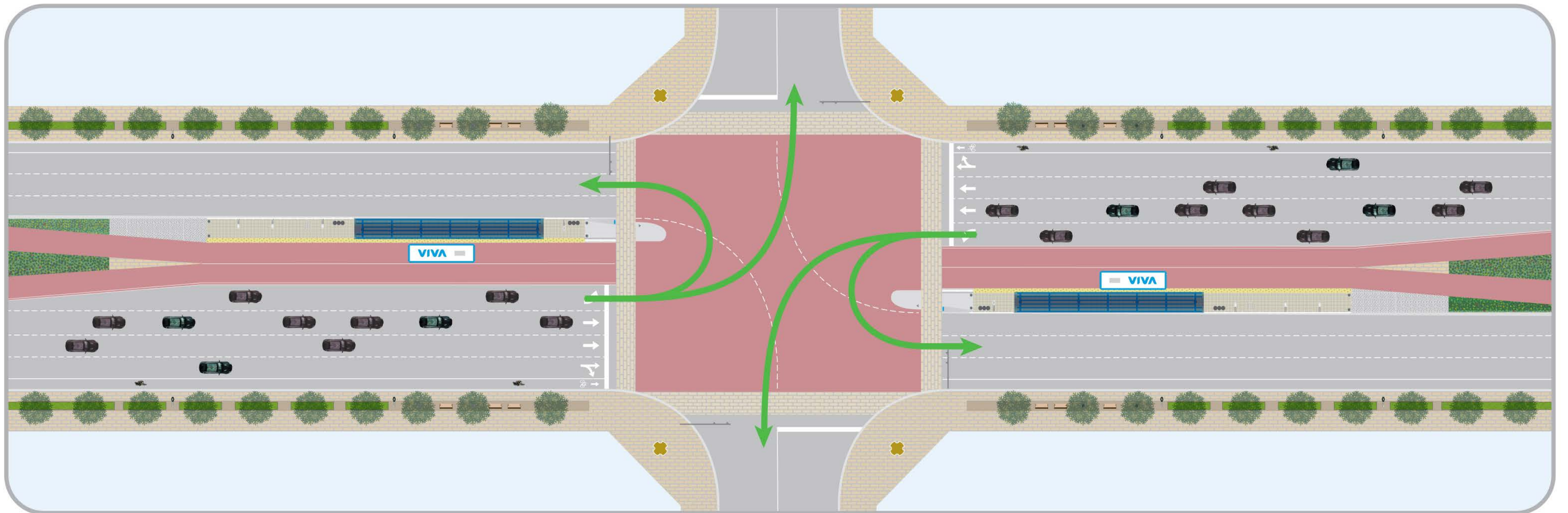
**DurhamRegion
Transit**

Brampton Transit

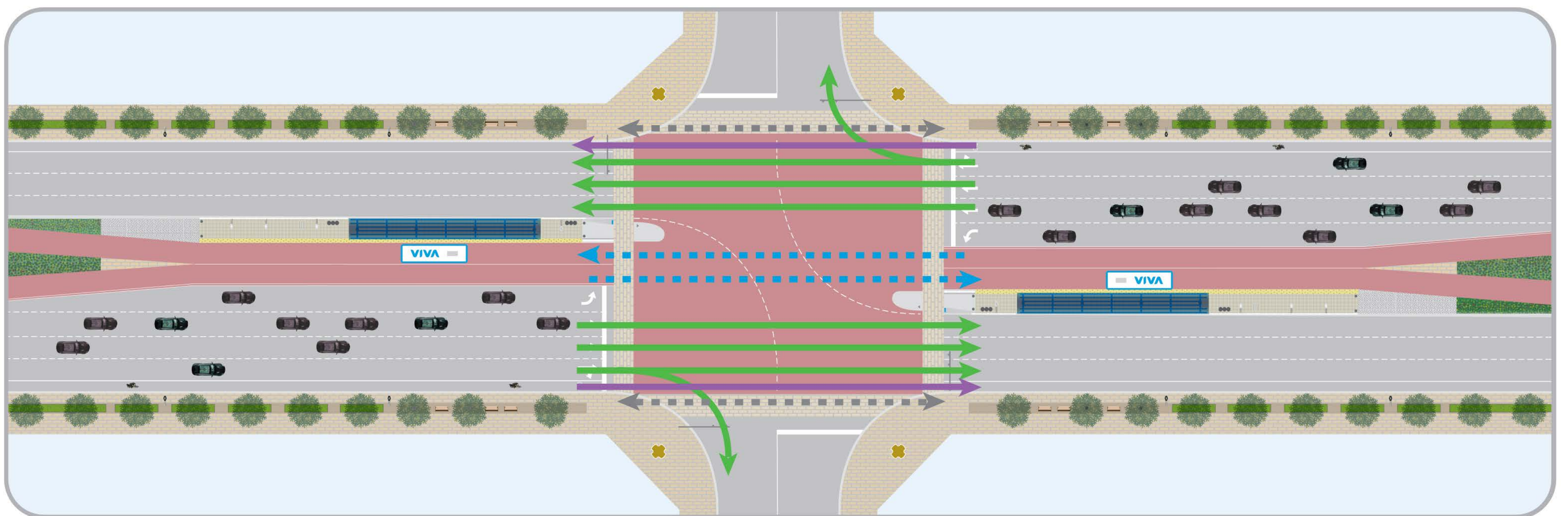
stations become major destinations along the corridor for public activity



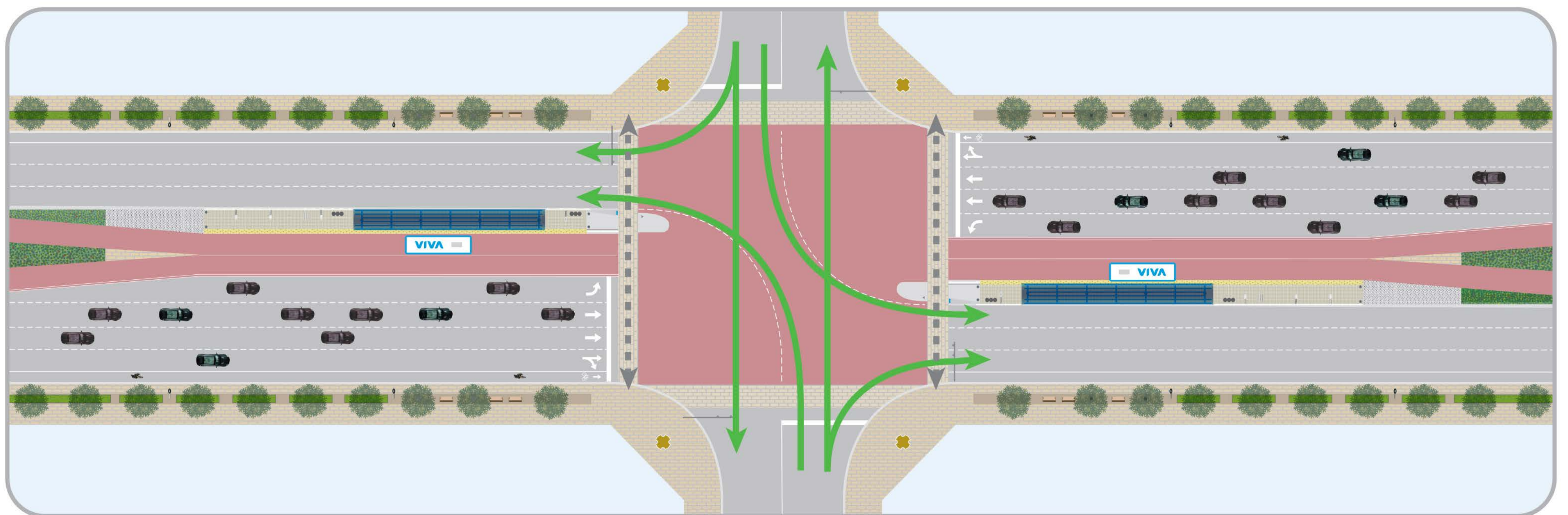
traffic flows in a new way at signalized intersections



first signal phase: left and u-turns for Highway 7/ Centre Street/ Bathurst Street traffic



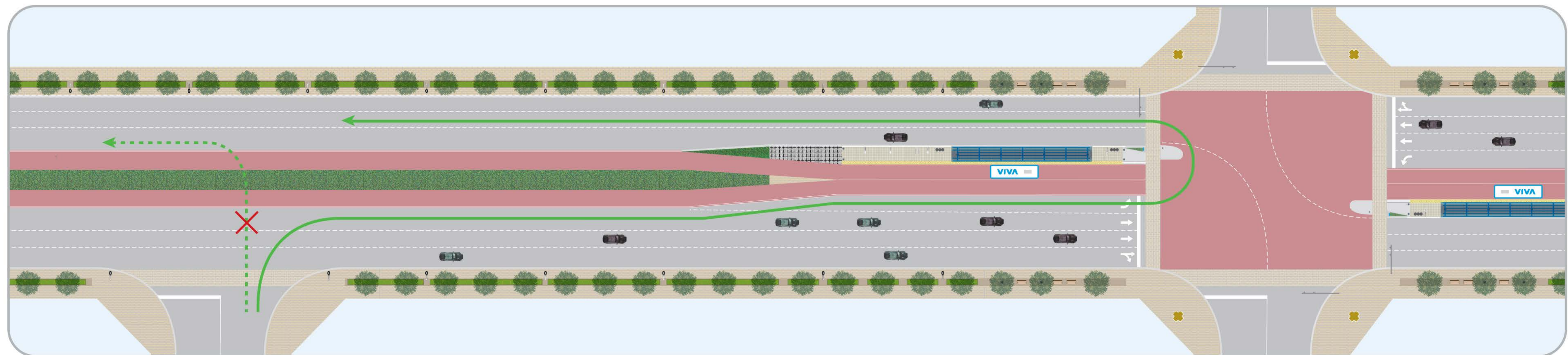
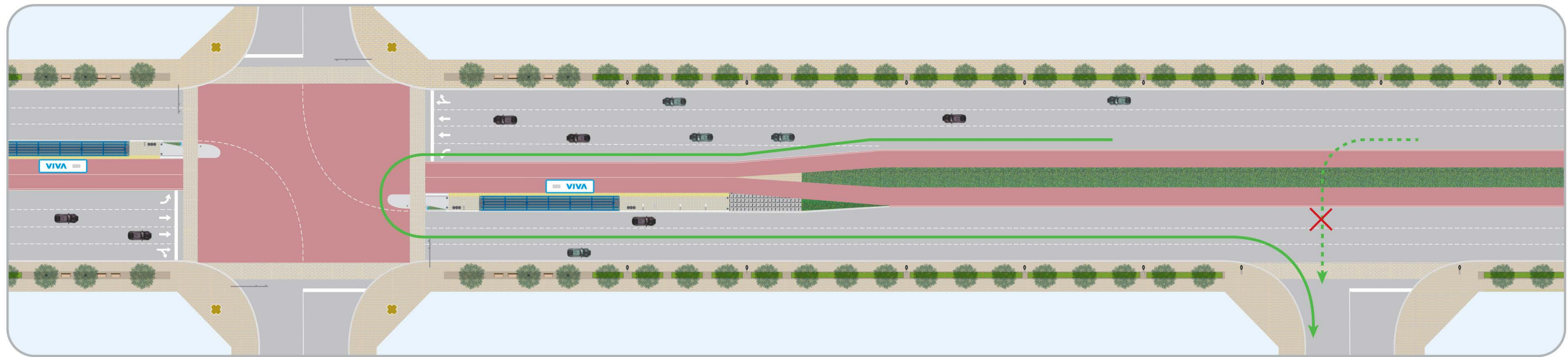
second signal phase: right-turns and straight-through for traffic, straight-through for pedestrians and rapid transit on Highway 7/Centre Street/ Bathurst Street



third signal phase: left and right-turns and straight-through for cross street traffic

safer left-turns in vaughan

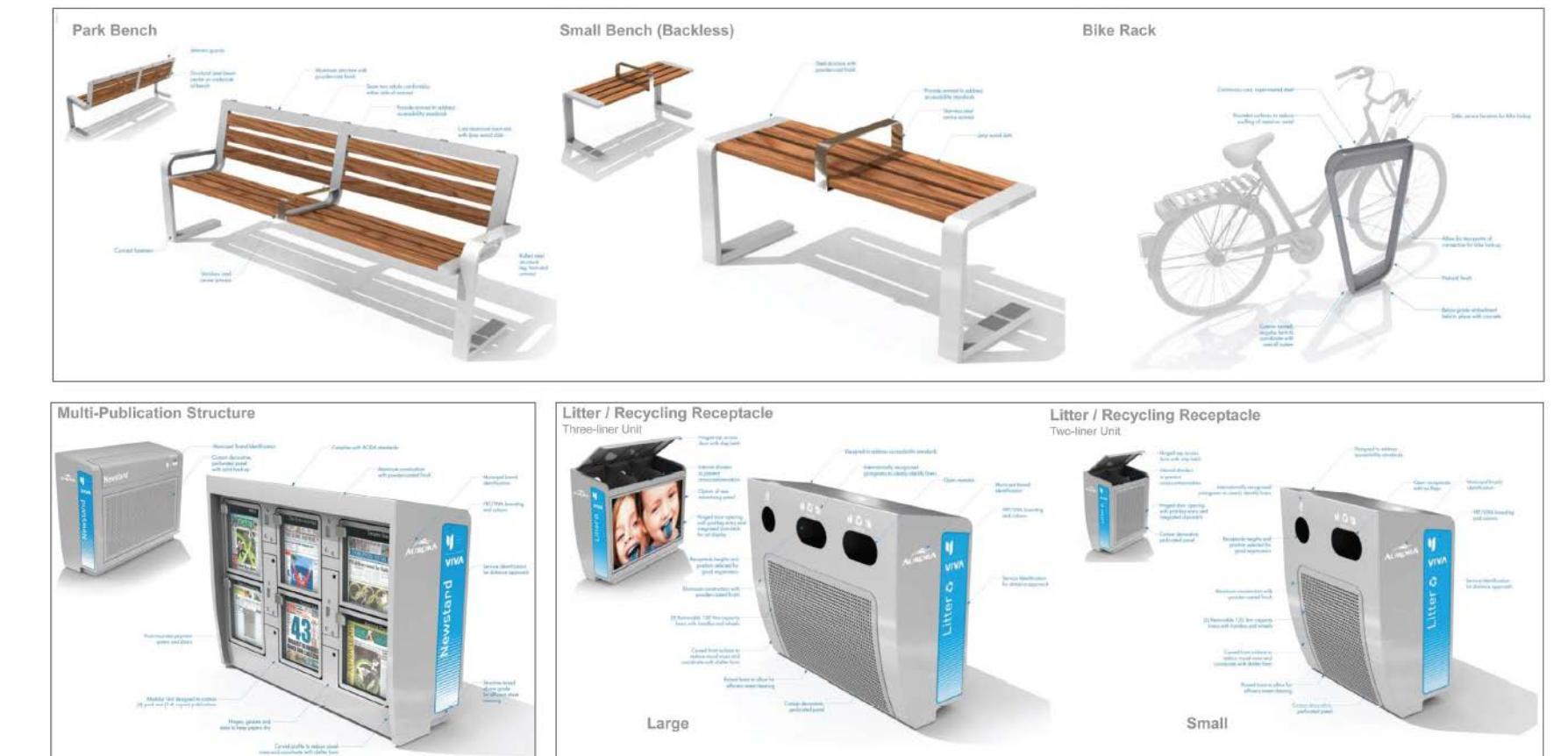
- No more waiting for oncoming traffic to clear before making left turns across Highway 7/ Centre Street/ Bathurst Street.
- At the nearest intersection, drivers can use the dedicated left turn signal to make a u-turn and safely approach their destination.
- Left turns will be made at intersections, eliminating the traffic delays and hazards caused by mid-block left turns.
- Vaughan will have walkable hubs of activity along Highway 7, Centre Street and Bathurst Street, with new opportunities for living, working and shopping.
- Transformation encourages sustainable travel choices, relieving traffic congestion in Vaughan with up to 70 vehicles replaced by a single bus.



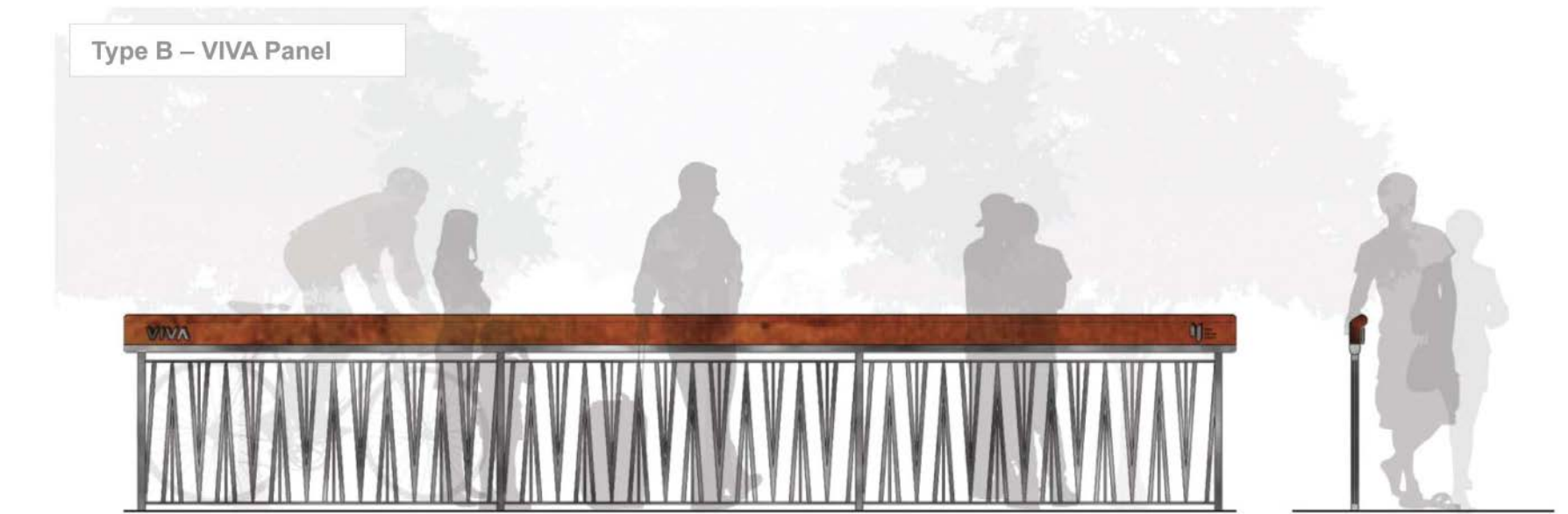
streetscape and furnishings

- Once construction is completed on the Highway 7 West rapidways, attractive street furniture will be a welcome addition.
- Street furniture will consist of large and small park benches, waste and recycling receptacles, multi-publication structures and bike racks.
- Streetscape details include side inlet grates, decorative tree grates and attractive sidewalk treatments and finishes.

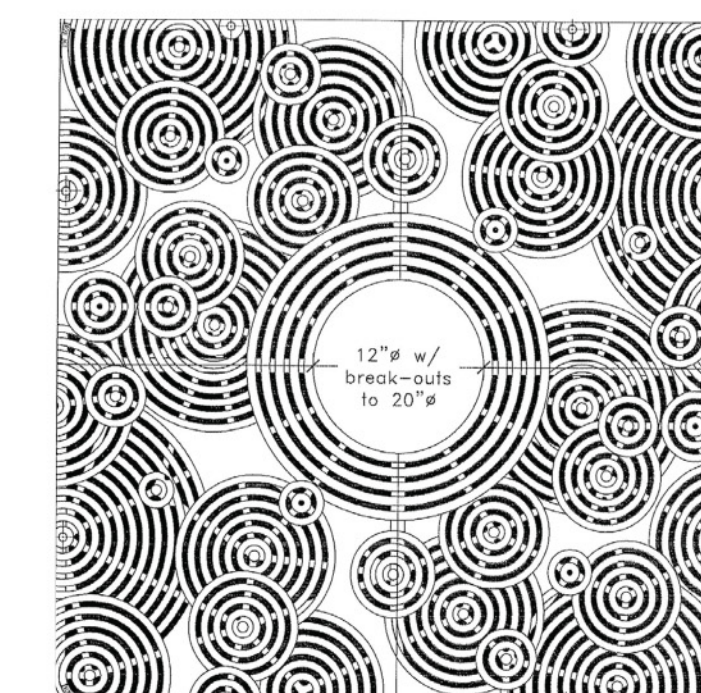
streetscape amenities



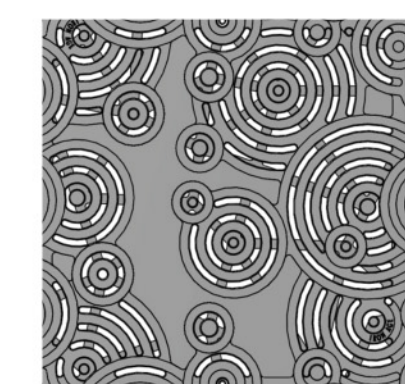
furniture



railings at intersections (where required)



tree grate



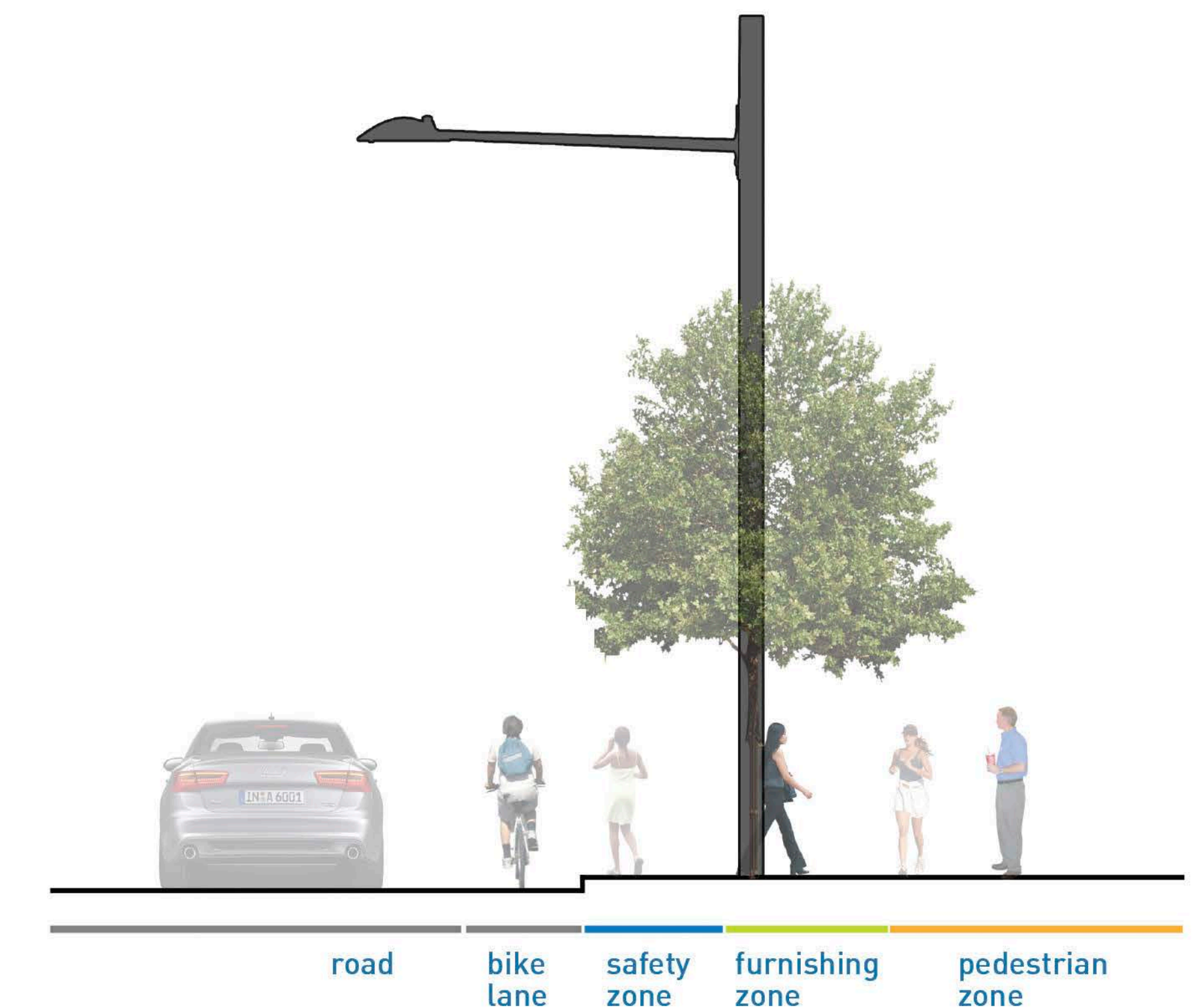
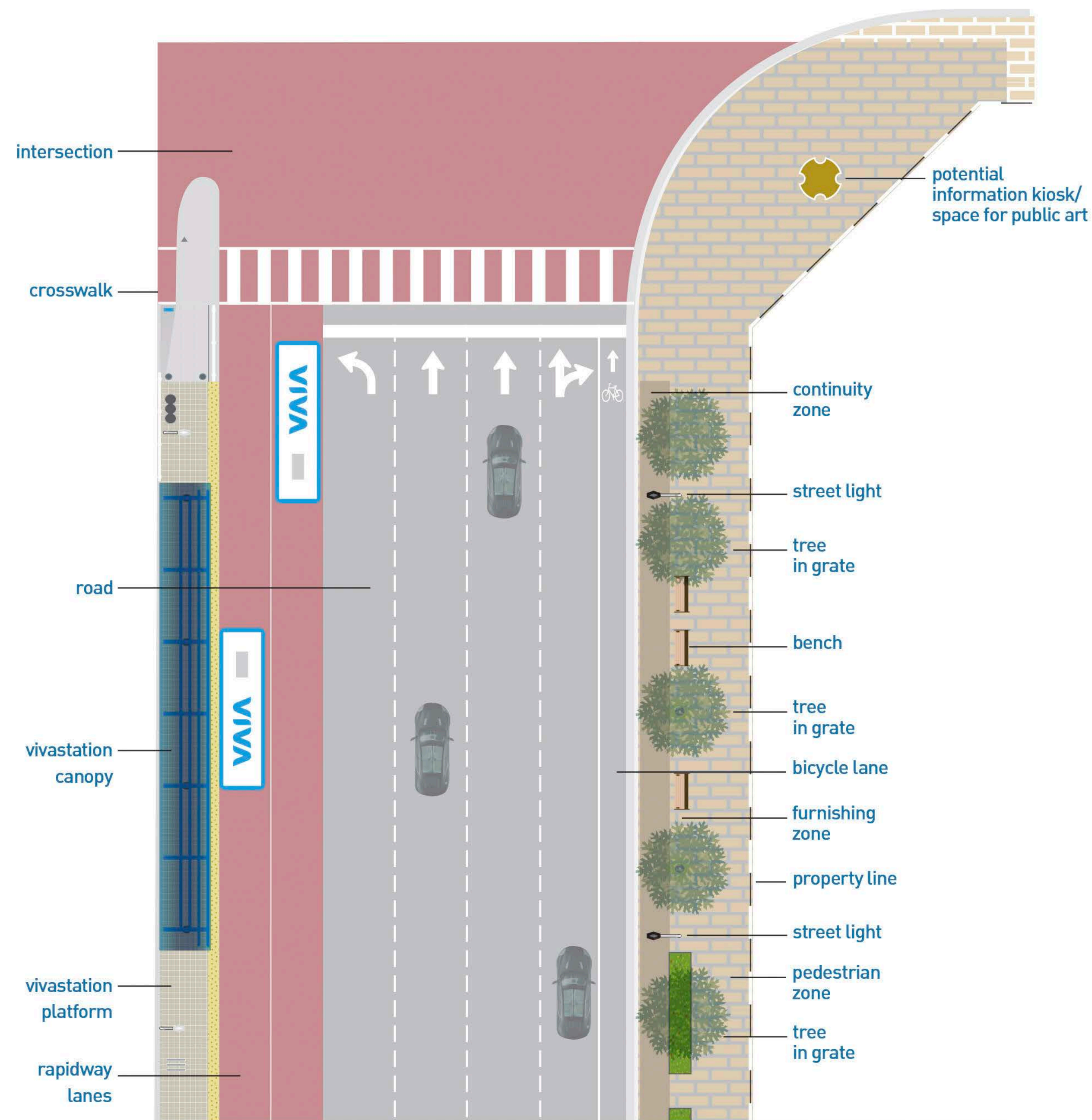
side inlet grate

decorative grates



attractive, welcoming streetscape

- Landscaped areas, comfortable seating, improved lighting and attractive architectural elements recognize Highway 7, Centre Street and Bathurst Street as key destinations for people to meet, gather and socialize. attractive, welcoming streetscape.
- The combination of great transit access and wider, pedestrian-friendly sidewalks will encourage businesses and developers to offer more choices to work, dine, live and shop.



new vivastations provide comfort, convenience and protection

roof extends up and over viva vehicles to keep snow and rain off while embarking/disembarking

roof and side panels made of tinted glass for greater visibility and comfort

extended platform length can accommodate multiple viva vehicles, enhancing embarking/disembarking efficiency

arrival/departure screens provide real-time scheduling info

security surveillance and intercom for emergency assistance on platform

raised platform provides near level boarding of viva vehicles, reducing the need to climb steps or lift objects

temperature and motion activated heaters in wind enclosure provide warmth while accessible entry doors minimize heat loss

tactile pavers along rapidway edge provide greater safety



energy-efficient lighting throughout for greater safety and comfort



glass wind enclosure provides shelter and protection from the elements



flexible cash, pass and Presto fare machine



wayfinding signage provides riders with easy and quick direction



ample seating inside and out provides greater personal space and comfort

green spaces for trees and plants are priorities

- Plans include protecting existing vegetation and trees wherever possible.
- Once the rapidway is complete, over 400 new trees will be planted along Highway 7/ Centre Street/ Bathurst Street.
- We're planting salt and drought-resistant trees and shrubs and adding underground soil-cell technology, which helps to support healthy trees and plants.



street tree selection

preferred street trees



Red Oak
Quercus rubra



American Buckeye
Aesculus glabra



Kentucky Coffeetree
Gymnocladus dioica



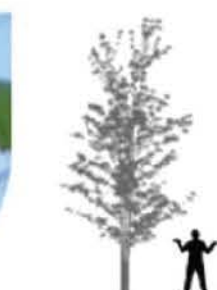
Shademaster Honeylocust
Gleditsia triacanthos var. Inermis 'Shademaster'



Freeman Maple
Acer x freemanii



Accolade Elm
Ulmus 'Accolade'



Common Hackberry
Celtis occidentalis



Greenspire Linden
Tilia cordata 'Greenspire'



trees for under hydro lines



Pear
Pyrus 'Aristocrat' / 'Capital' / 'Chanticleer' / 'Redspire'



Field Maple
Acer campestre



Ivory Silk Tree Lilac
Syringa reticulata 'Ivory silk'



Serviceberry
Amelanchier canadensis



Shubert Chokecherry
Prunus virginiana 'Shubert'



preparing for road construction

Before we can begin road construction, we need to prepare everything alongside the road first.

Between Edgeley Boulevard and Bowes Road, we'll begin with:

- relocating utilities
- building retaining walls
- working on water culverts and bridges.

Even though all of these aren't on the road, lane closures may be required.



Millway Ave

Jane St

Maplecrete Rd

Creditstone Rd



Keele St

Bowes Rd

building a rapidway step-by-step

Every effort will be made to minimize the impacts of construction and ensure that traffic keeps moving as smoothly as possible. Progress is dependant on a number of factors, including weather and scheduling.



Pave final rapidway and roadway

Build vivastations and landscape boulevard and median along rapidway

Build rapidways down centre of roadway

Shift traffic to new lanes and repeat the previous steps on other side

Install permanent traffic signals and pave/paint new traffic lanes

Put in new curbs, drains and sidewalks

Install new streetlights

Remove old curbs and drains

Shift all lanes over to one side of roadway

Move utilities and install temporary traffic signals

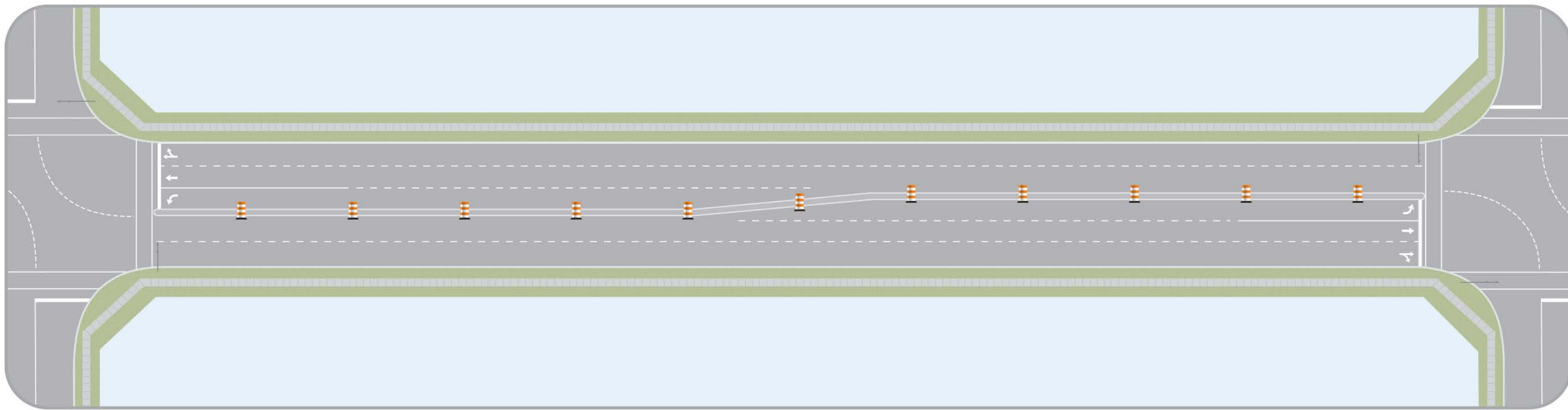


road construction staged to minimize disruption

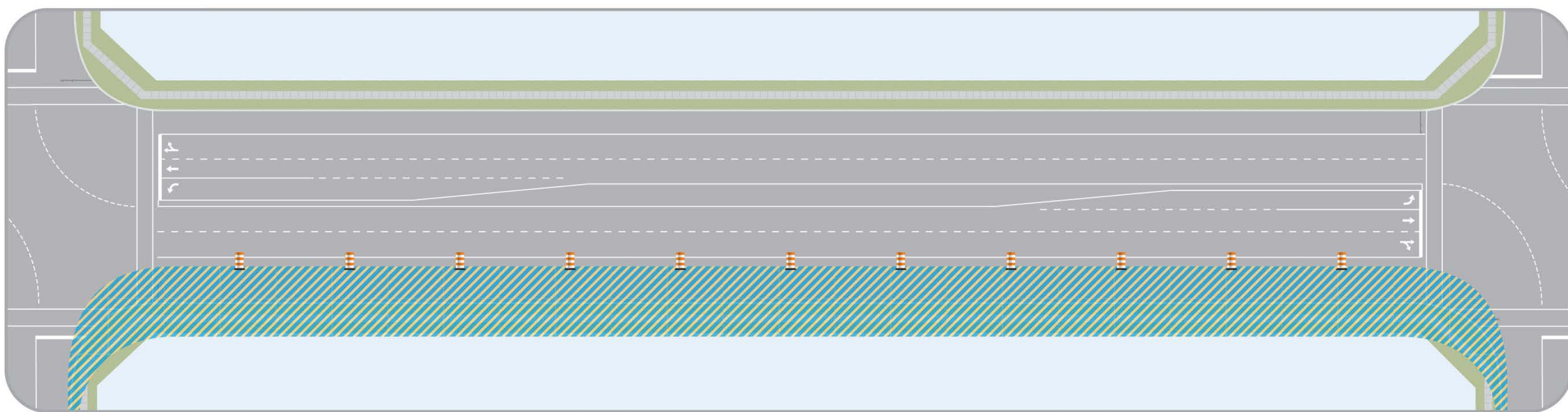
- Road construction will be staged, once utilities have been moved back.
- Construction staging helps traffic flow, to minimize disruption of the local community, transit users and drivers.



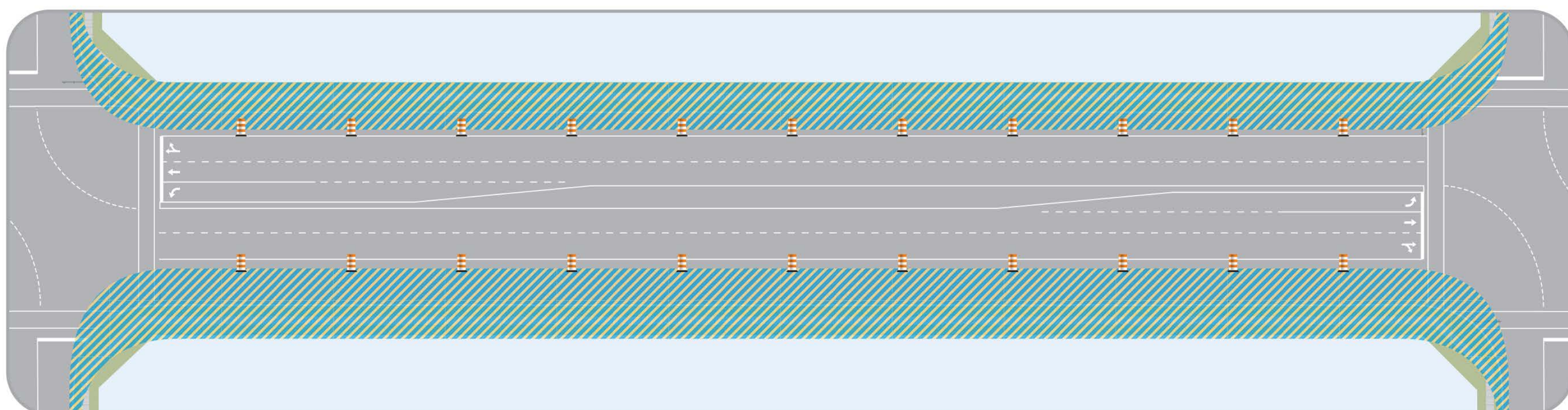
Stage 1: Removal of centre medians



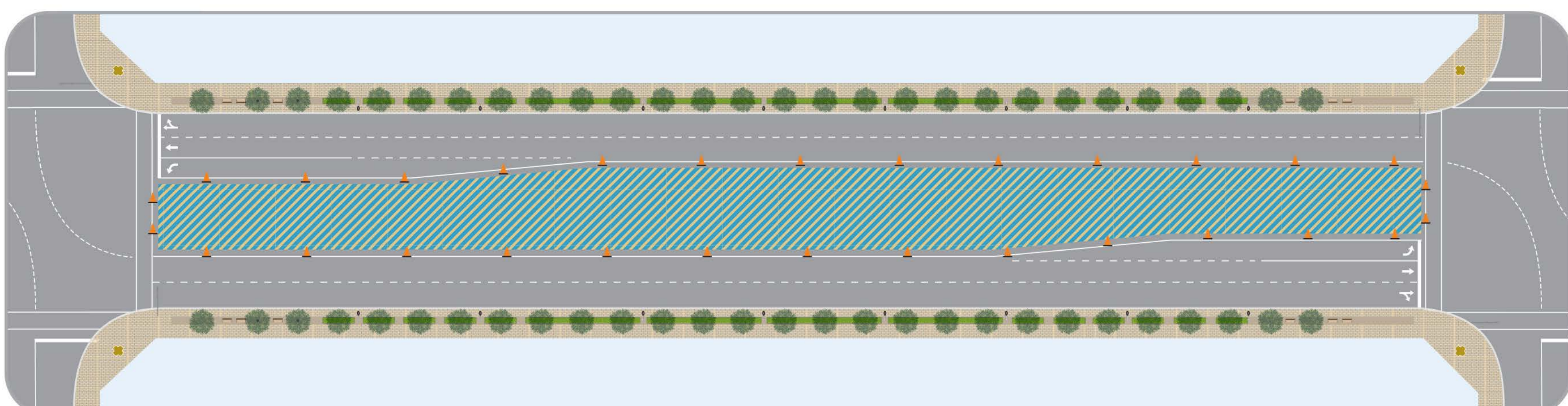
Stage 2: First side road widening



Stage 3: Second side road widening



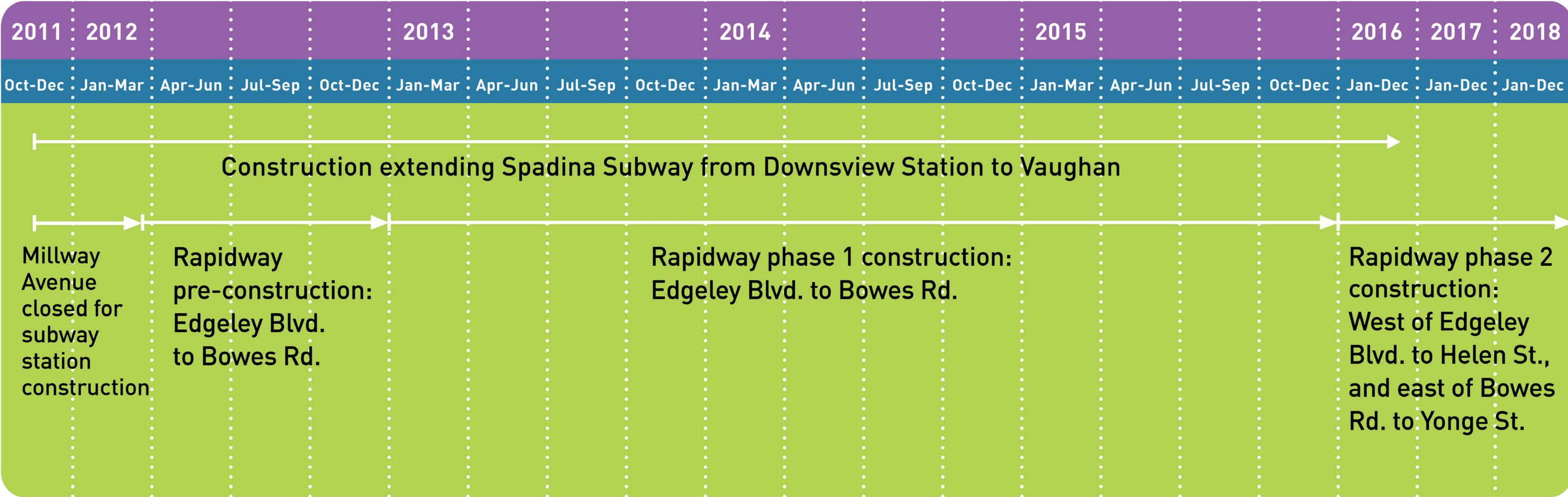
Stage 4: Building down the middle



how construction will unfold



project construction timeline



Schedule subject to change.

- In 2012, crews surveyed roads and tested soil in preparation for widening Highway 7 West.
- In 2013-2016, construction will be sequenced, with major road work starting after utility work.
- Construction is scheduled to be complete in 2016 to coincide with the Spadina Subway Extension.



For **vivanext** project information, and to sign up for construction updates: vivanext.com



access for pedestrians

- Pedestrian convenience and safety are top priorities.
- When sidewalks have to be temporarily re-routed, there will be clear signs showing pedestrians where to go.
- Signs and temporary sidewalks will make it easy to locate and access your favourite stores and other businesses during construction.
- For your own safety, please follow detour signs and cross at signalized intersections.
- When transit stops are temporarily relocated, signs will be posted describing the new location and the easiest way to get there.



How you cross the street has changed.

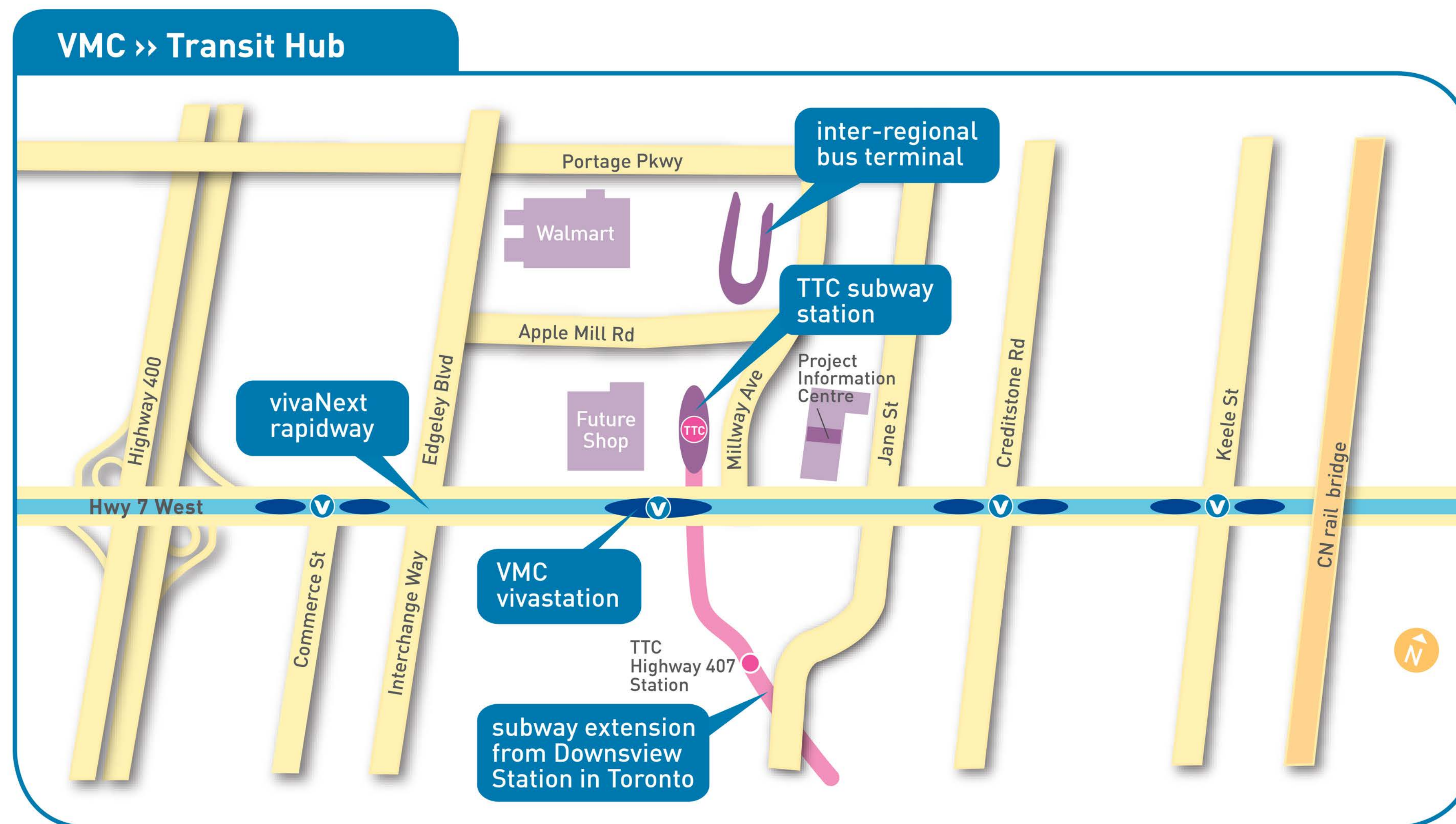


rapidway route and stations on highway 7 west

- There will be a total of 13 new vivastations built along Highway 7 West/ Centre Street/ Bathurst Street, as part of a total of 72 vivastations to be built on York Region's rapidways.
- Vivastations will be in the centre of the road with the exception of the Bathurst and Highway 7 vivastation, which will be curb side.
- These new stations will create an attractive street presence, complementing future mixed use development.
- York Region's first new vivastation has already been built and is in operation in Markham, on Enterprise Boulevard at Warden Avenue.
- Viva makes a direct connection to TTC Spadina Subway in the middle of Vaughan's new downtown, Vaughan Metropolitan Centre [VMC].



New vivastation on Enterprise Boulevard in Markham opened in 2011.



Vaughan Metropolitan Centre vivastation at Spadina Subway

supporting local businesses throughout construction



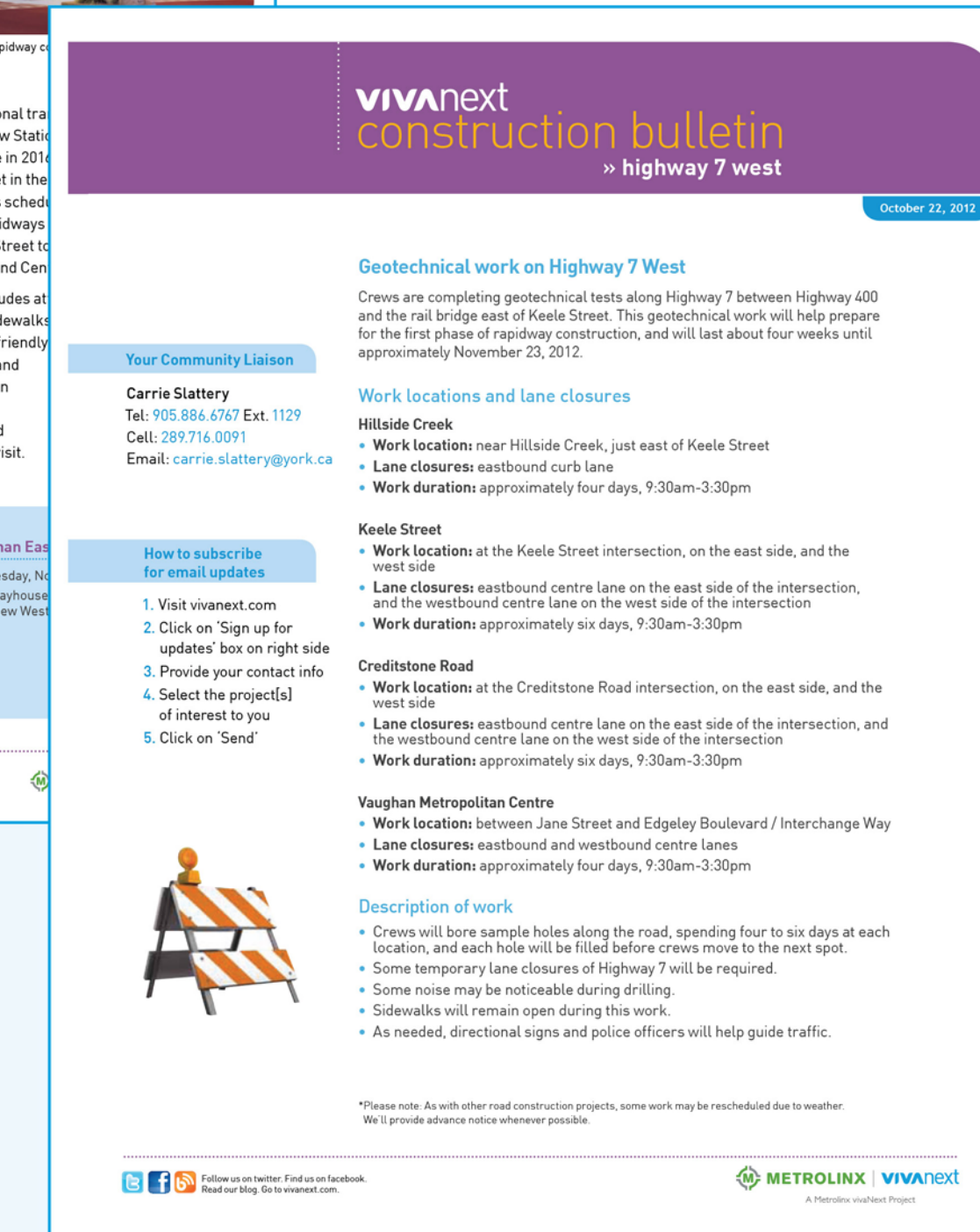
We are committed to minimizing construction impact on local businesses, by:

- profiling local businesses on the vivaNext website.
- keeping customer access to businesses.
- providing open-for-business signage.
- working with the Chamber of Commerce.
- provide advance notice of major work activities.



keeping you informed throughout construction

- Coping with construction is a lot easier when you know what to expect, where and for how long.
- It also helps to be reminded of all the great benefits you will enjoy at the end of it all.
- You can find answers to any questions you may have through:
 - project newsletters and bulletins.
 - contacting your Community Liaison.
 - the vivaNext project information centre, at 7800 Jane Street.
 - the vivaNext website, vivanext.com.
 - email construction notices when you sign up at vivanext.com.
 - public open houses.
 - visiting us on Facebook, following us on Twitter, or reading our blog at vivanext.com/blog.



bus stop relocations

- Throughout construction, bus stops and shelters may be affected and, in some cases, relocated.
- When bus stops are relocated, notices will be placed at your stop in advance.
- Pedestrian safety will be maintained with guides on site as needed, to guide you around construction.



You're
In The
Right Place
– Board
Bus Here

METROLINX | VIVANEXT

Bus Stop
Has Moved
To
Northeast
Corner

For more information visit yrt.ca
or call 1.866.668.3978

METROLINX | VIVANEXT



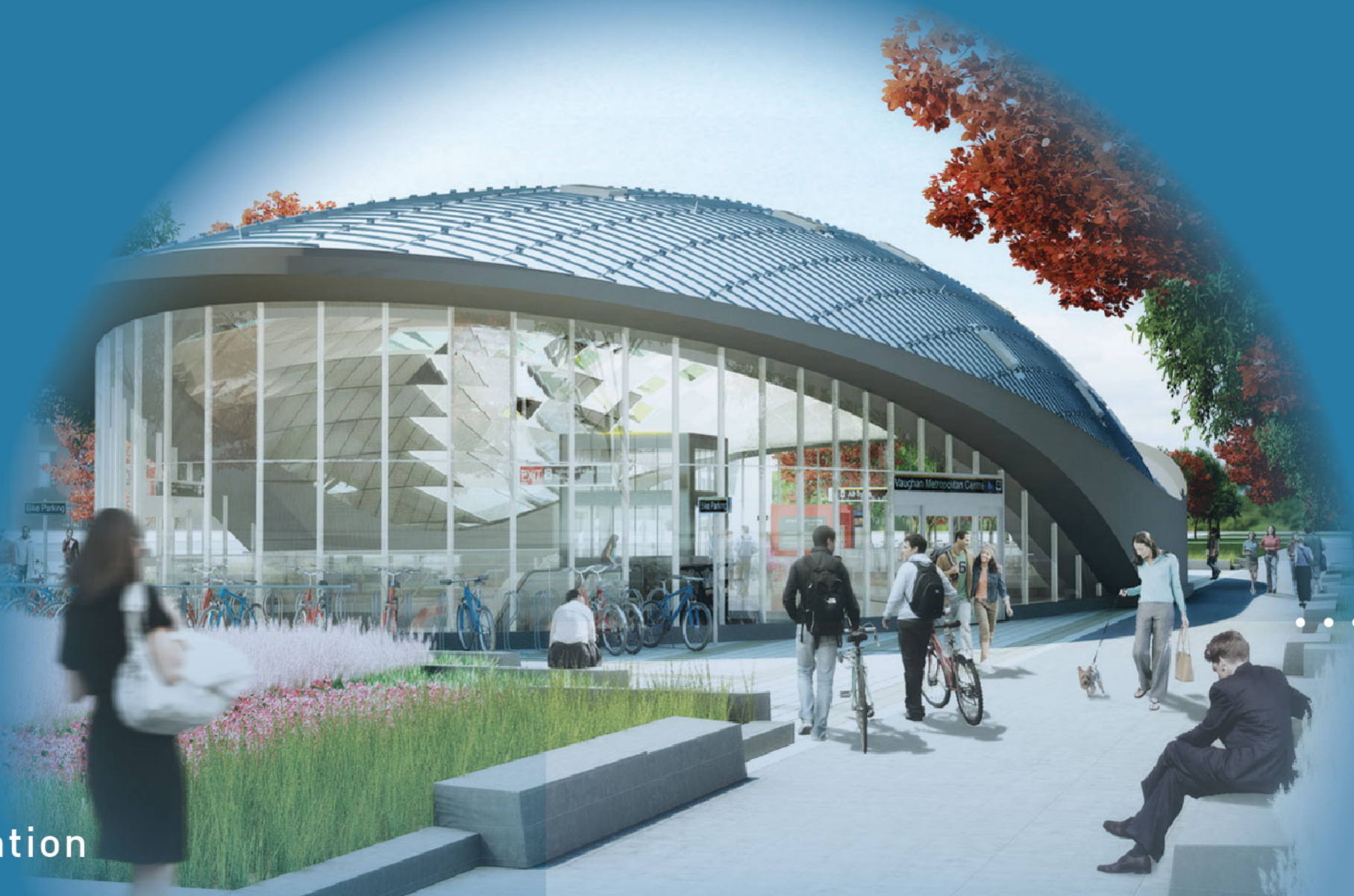
let's keep in touch

- We know that you want to know about what's happening, so be sure to sign up for construction notices at vivanext.com/signup, read our blog at vivanext.com/blog, and find us on [facebook](#) and [twitter](#).
- You'll also receive newsletters from us in the mail, and when we're hosting another open house we'll be sure to let you know.

The collage features several key elements:

- Top Left:** A screenshot of the VivaNext website's main page, displaying the logo and navigation menu.
- Top Center:** A larger screenshot of the VivaNext website's 'Welcome' page, featuring a 'Sign up for Updates' button and various news snippets.
- Bottom Left:** A screenshot of a blog post titled 'Rapid transit is on the way for Vaughan' with an image of a modern transit station.
- Bottom Center:** A screenshot of the VivaNext Facebook page, showing a profile picture, cover photo, and a post with 368 likes.
- Bottom Right:** A screenshot of a Twitter feed showing two tweets from VivaNext regarding temporary lane closures on Highway 7.
- Right Side:** A woman with blonde hair is shown smiling and looking at a laptop that displays the VivaNext website.

rapidway and subway connect at Vaughan Metropolitan Centre



VMC subway station



VMC rapidway station



Spadina subway stations



- vivaNext rapidway (2012-2016)
- vivaNext rapidway (2015-2018)
- subway extension (2011-2016)
- designated VMC area
- V rapidway vivastation
- TTC subway station

hwy 7 west rapidway

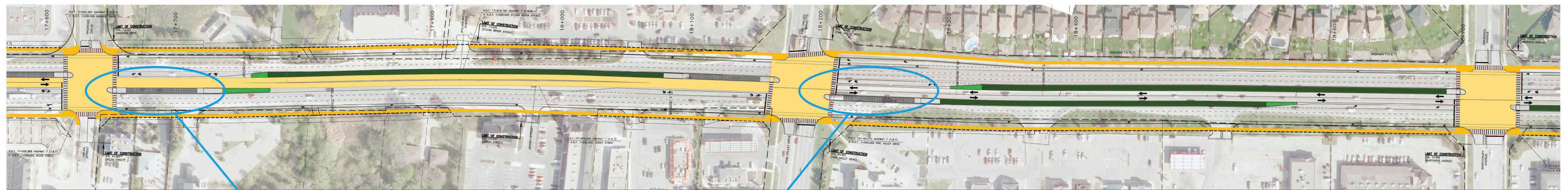
1. Helen Street to Marycroft Road

Retaining wall designs are in the design stages for this section. For more detail talk to staff and refer to the maps on the tables

Wigwoss Dr

Pine Valley Dr

Aberdeen Ave

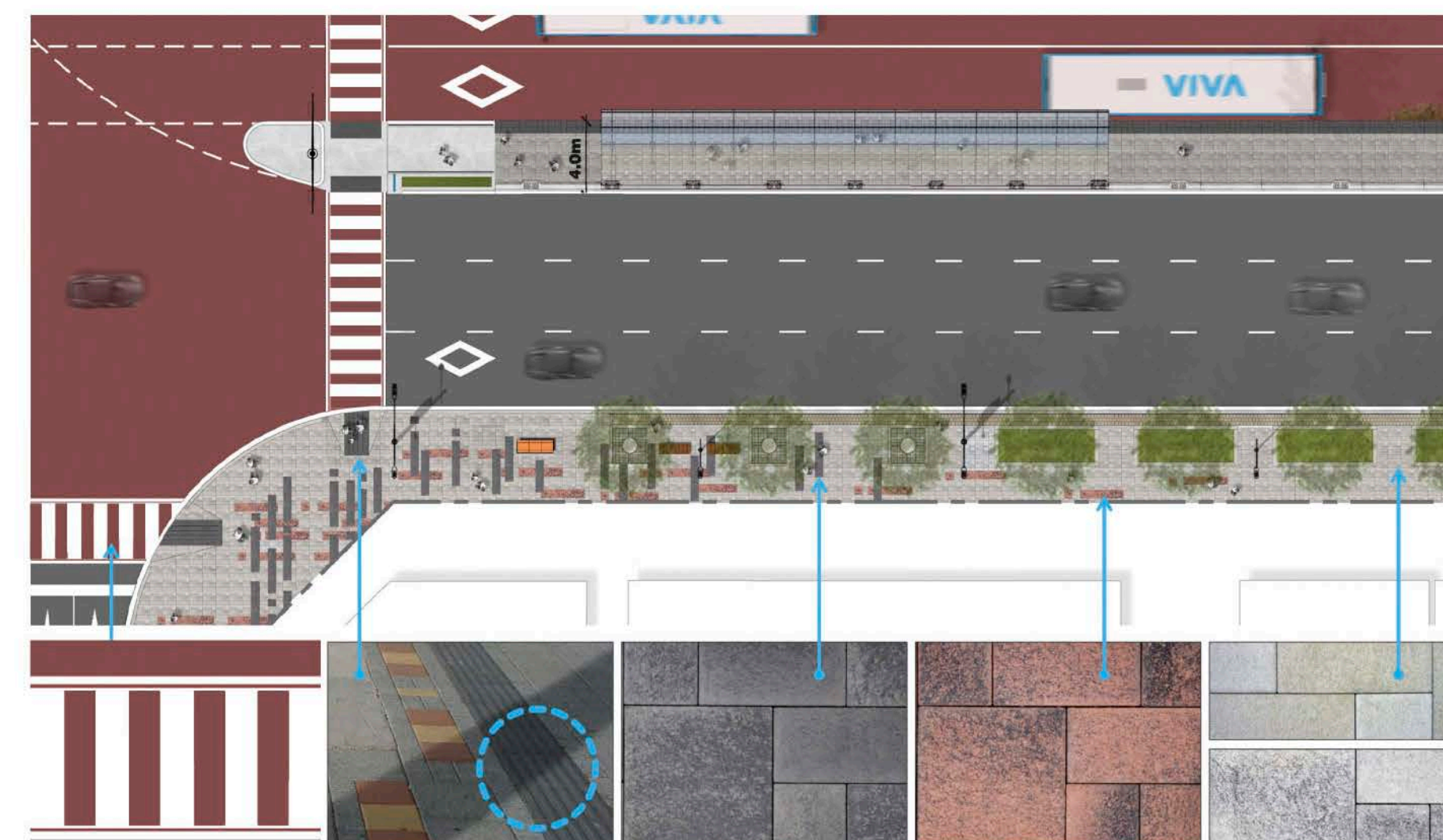


Helen St

Marycroft



vivastation



streetscape

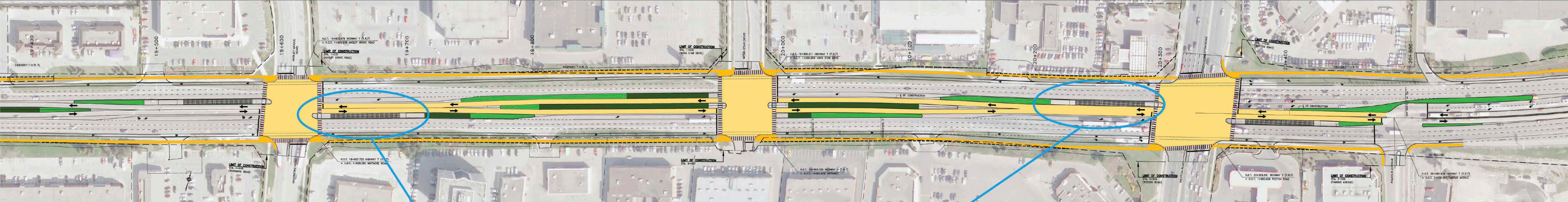
hwy 7 west rapidway

2. Whitmore Road to Weston Road

Ansley Grove Rd

Nova Star Dr

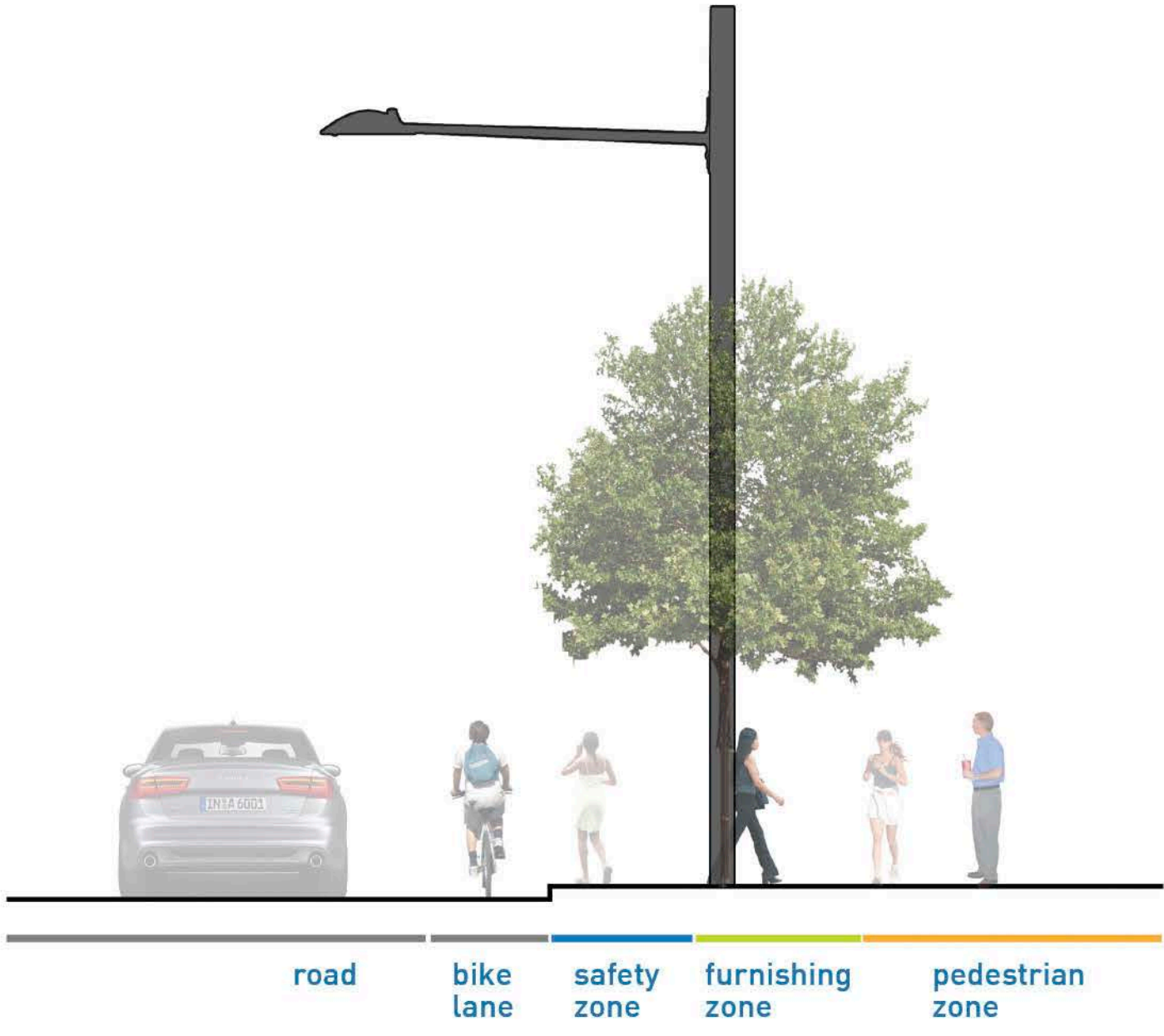
Weston Rd



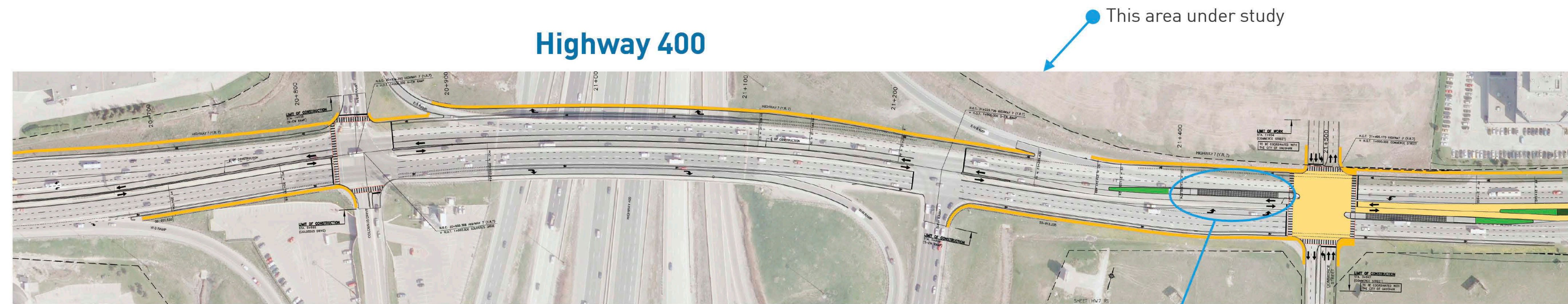
Whitmore Rd



vivastation



3. Colossus Drive to Edgeley Boulevard



Highway 400

This area under study

Colossus Dr

Commerce St



Street tree selection



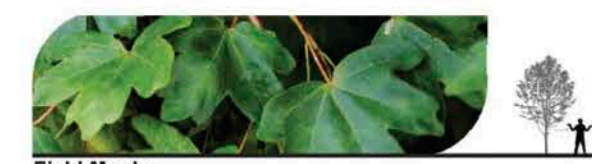
Red Oak
Quercus rubra



American Buckeye
Aesculus glabra



Pear
Pyrus 'Aristocrat' / 'Capital' / 'Chantlelee' / 'Redspire'



Field Maple
Acer campestre



Kentucky Coffeetree
Gymnocladus dioica



Shademaster Honeylocust
Gleditsia triacanthos var. Inermis 'Shademaster'



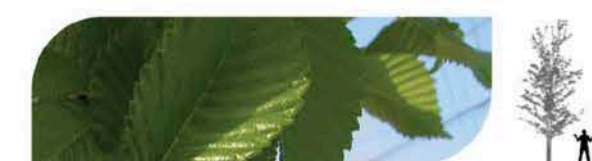
Ivory Silk Tree Lilac
Syringa reticulata 'Ivory silk'



Serviceberry
Amelanchier canadensis



Freeman Maple
Acer x freemanii



Accolade Elm
Ulmus 'Accolade'



Shubert Chokecherry
Prunus virginiana 'Shubert'



Common Hackberry
Celtis occidentalis



Greenspire Linden
Tilia cordata 'Greenspire'

Streetscape includes a variety of tree species.



vivastation

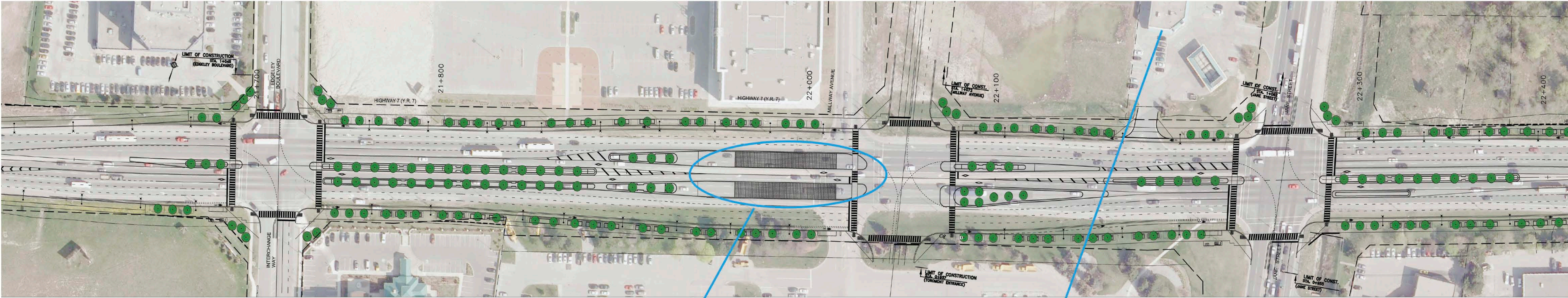
hwy 7 west rapidway

4. Edgeley Boulevard to Jane Street

Edgeley Blvd

Millway Ave

Jane St



Interchange Way



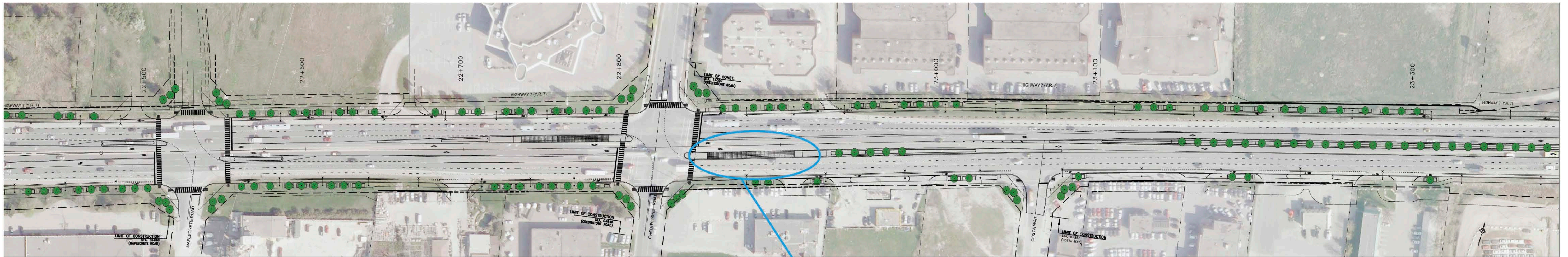
VMC station



project information centre

hwy 7 west rapidway

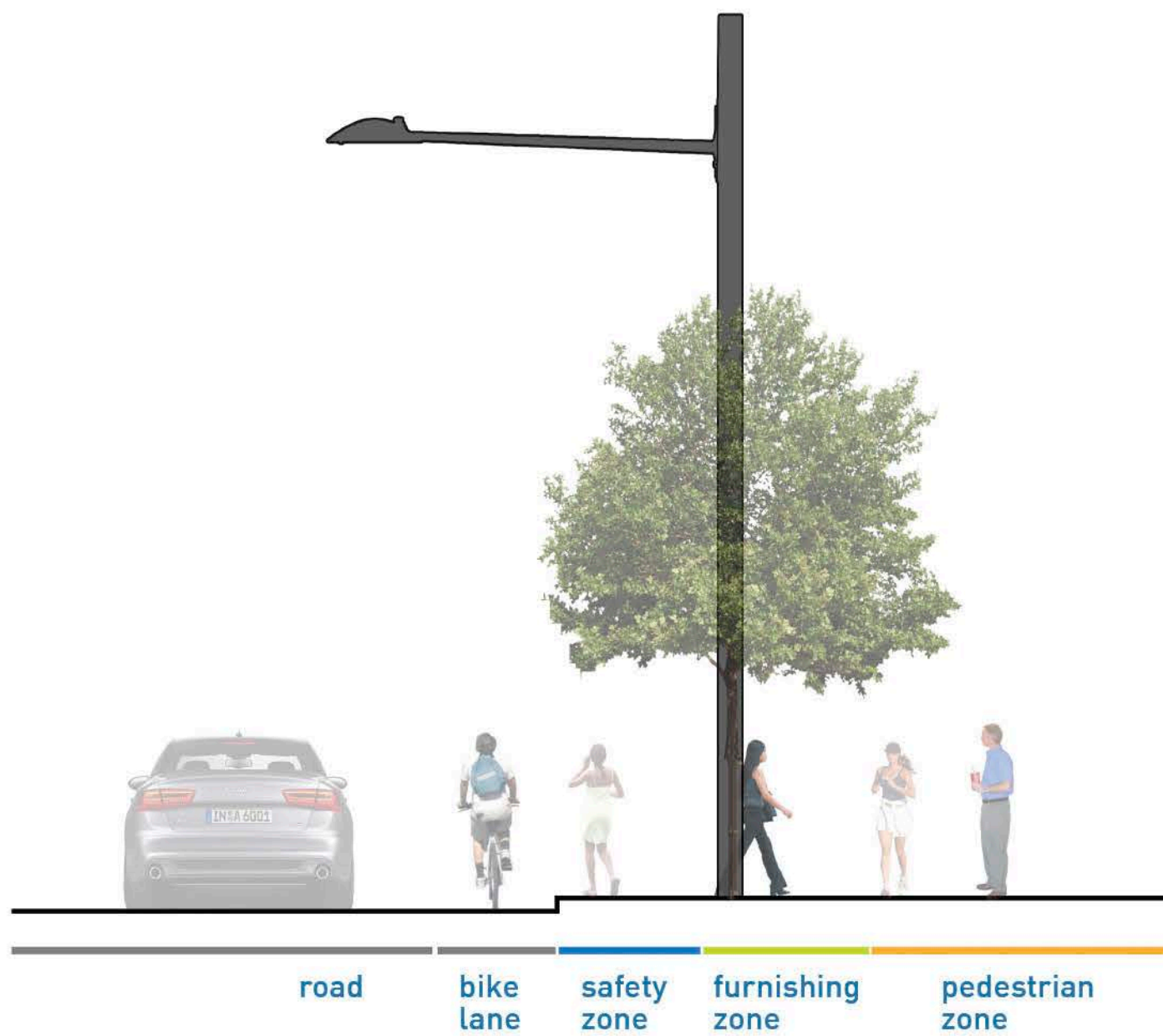
5. Maplecrete Road to Costa Way



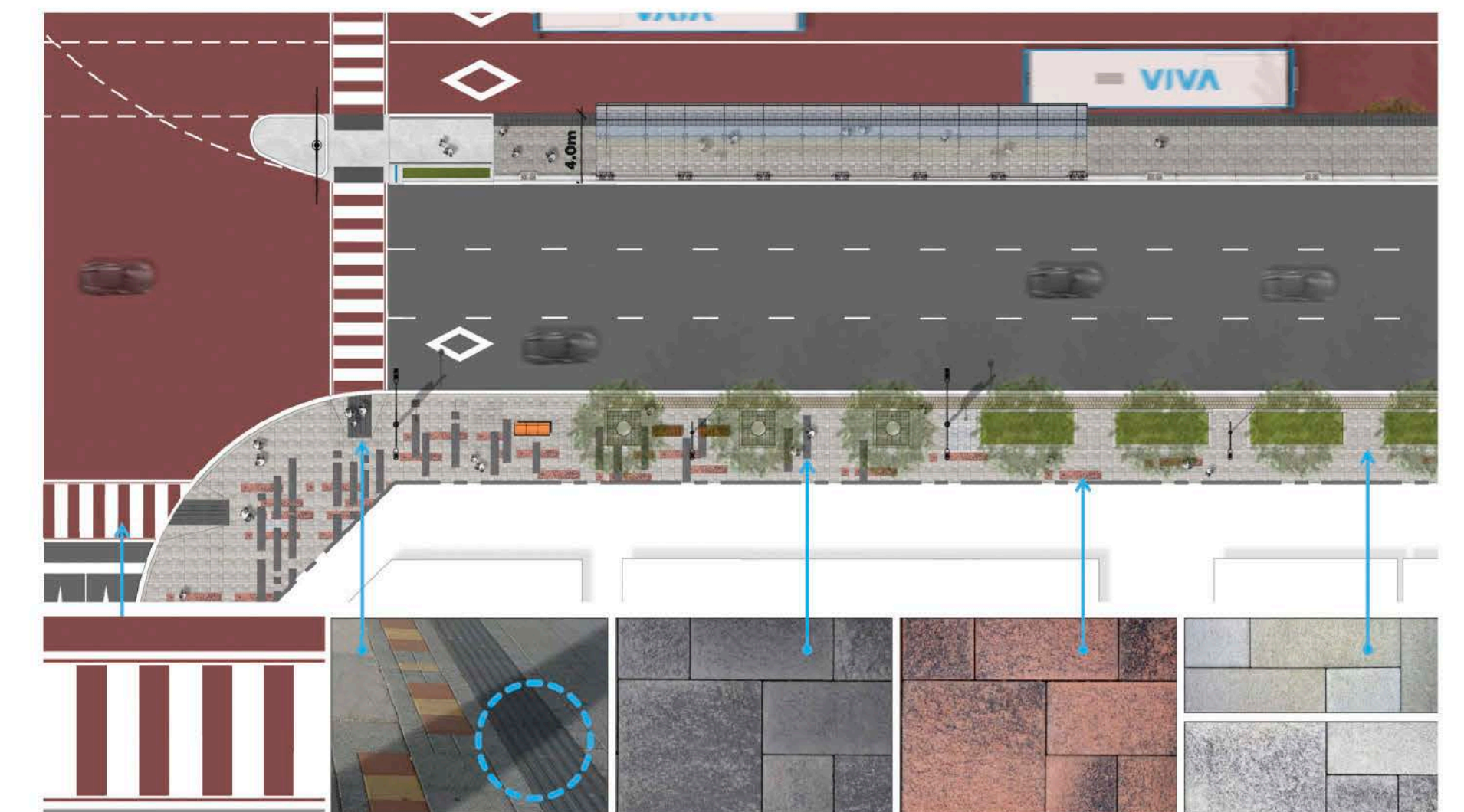
Maplecrete Rd

Creditstone Rd

Costa Way



vivastation



streetscape

6. Keele Street to Bowes Road

Keele St

Bowes Rd

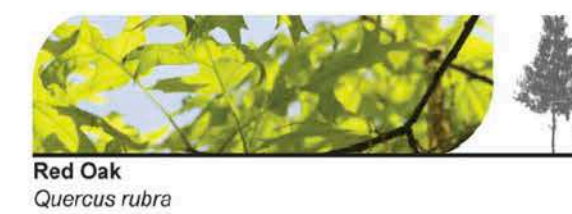


Baldwin Ave



vivastation

Street tree selection



Red Oak
Quercus rubra



American Buckeye
Aesculus glabra



Pear
Pyrus 'Aristocrat' / 'Capital' / 'Chanticleer' / 'Redspire'



Field Maple
Acer campestre



Kentucky Coffeetree
Gymnocladus dioica



Shademaster Honeylocust
Gleditsia triacanthos var. Inermis 'Shademaster'



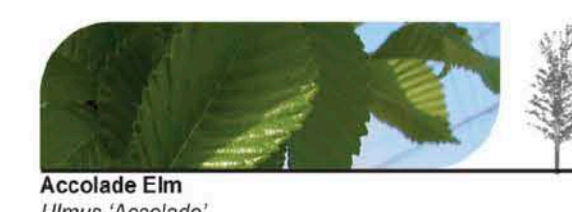
Ivory Silk Tree Lilac
Syringa reticulata 'Ivory silk'



Serviceberry
Amelanchier canadensis



Freeman Maple
Acer x freemanii



Accolade Elm
Ulmus 'Accolade'



Shubert Chokecherry
Prunus virginiana 'Shubert'



Common Hackberry
Celtis occidentalis

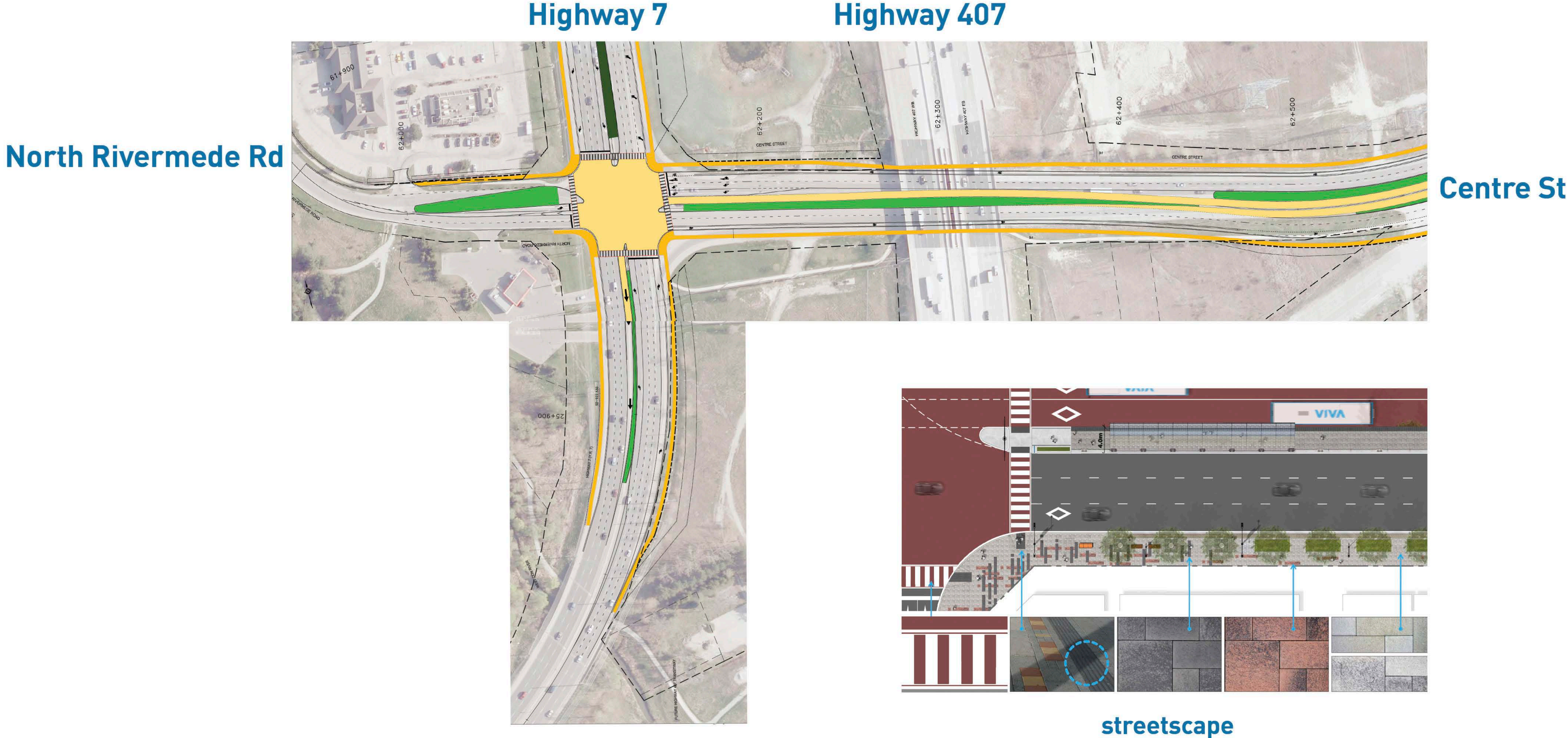


Greenspire Linden
Tilia cordata 'Greenspire'

Streetscape includes a variety of tree species.

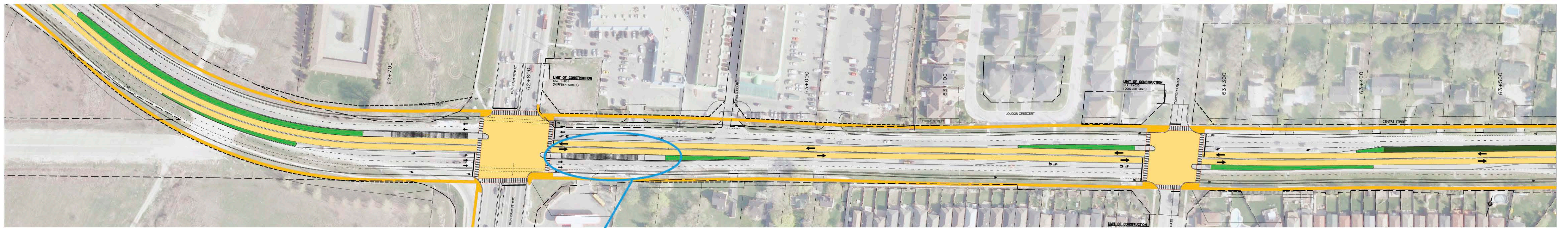
hwy 7 west and centre street rapidway

7. Intersection of Highway 7 and Centre Street



centre street rapidway

8. Dufferin Street to Concord Road



Dufferin St

Concord Rd



vivastation

Street tree selection



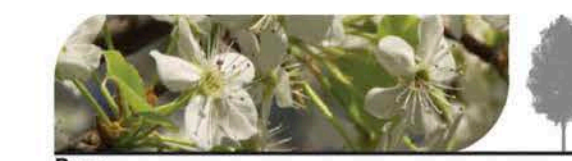
Red Oak

Quercus rubra



American Buckeye

Aesculus glabra



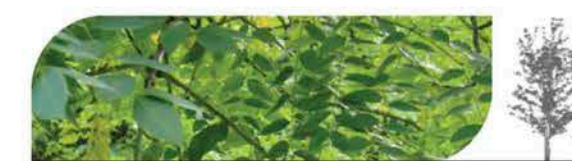
Pear

Pyrus 'Aristocrat' / 'Capital' / 'Chanteleer' / 'Redspire'



Field Maple

Acer campestre



Kentucky Coffeetree

Gymnocladus dioica



Shademaster Honeylocust

Gleditsia triacanthos var. inermis 'Shademaster'



Ivory Silk Tree Lilac

Syringa reticulata 'ivory silk'



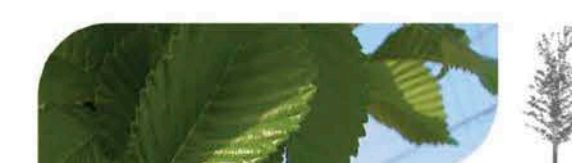
Serviceberry

Amelanchier canadensis



Freeman Maple

Acer x freemanii



Accolade Elm

Ulmus 'Accolade'



Shubert Chokecherry

Prunus virginiana 'Shubert'



Common Hackberry

Celtis occidentalis



Greenspire Linden

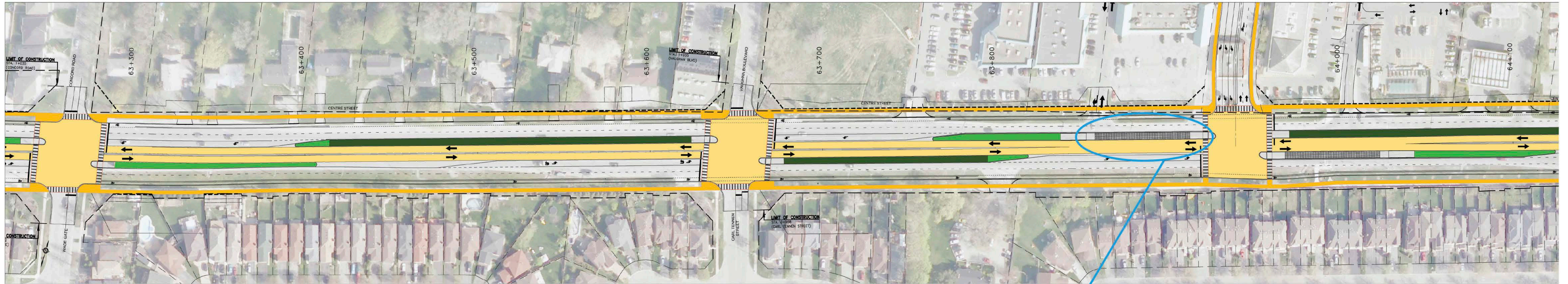
Tilia cordata 'Greenspire'

Streetscape includes a variety of tree species.

centre street rapidway

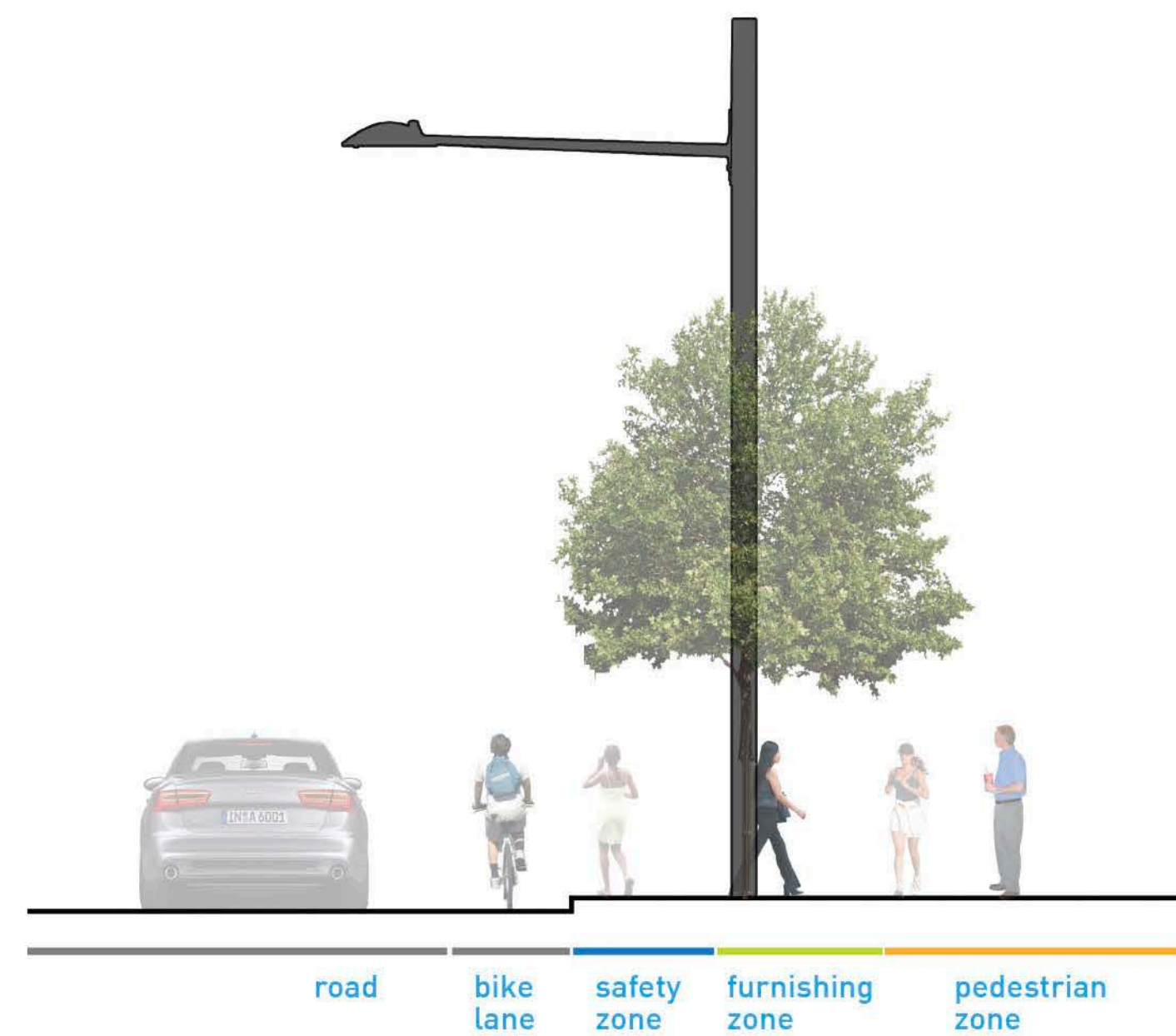
9. Concord Road to Vaughan Boulevard

Vaughan Blvd



Concord Rd

Carl Tennen St



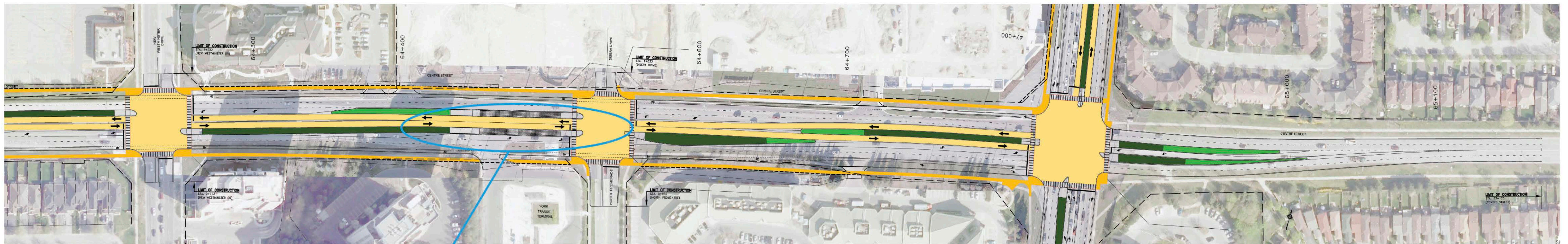
vivastation

centre street rapidway

10. New Westminster Road to Bathurst Street

Disera Dr

Bathurst St

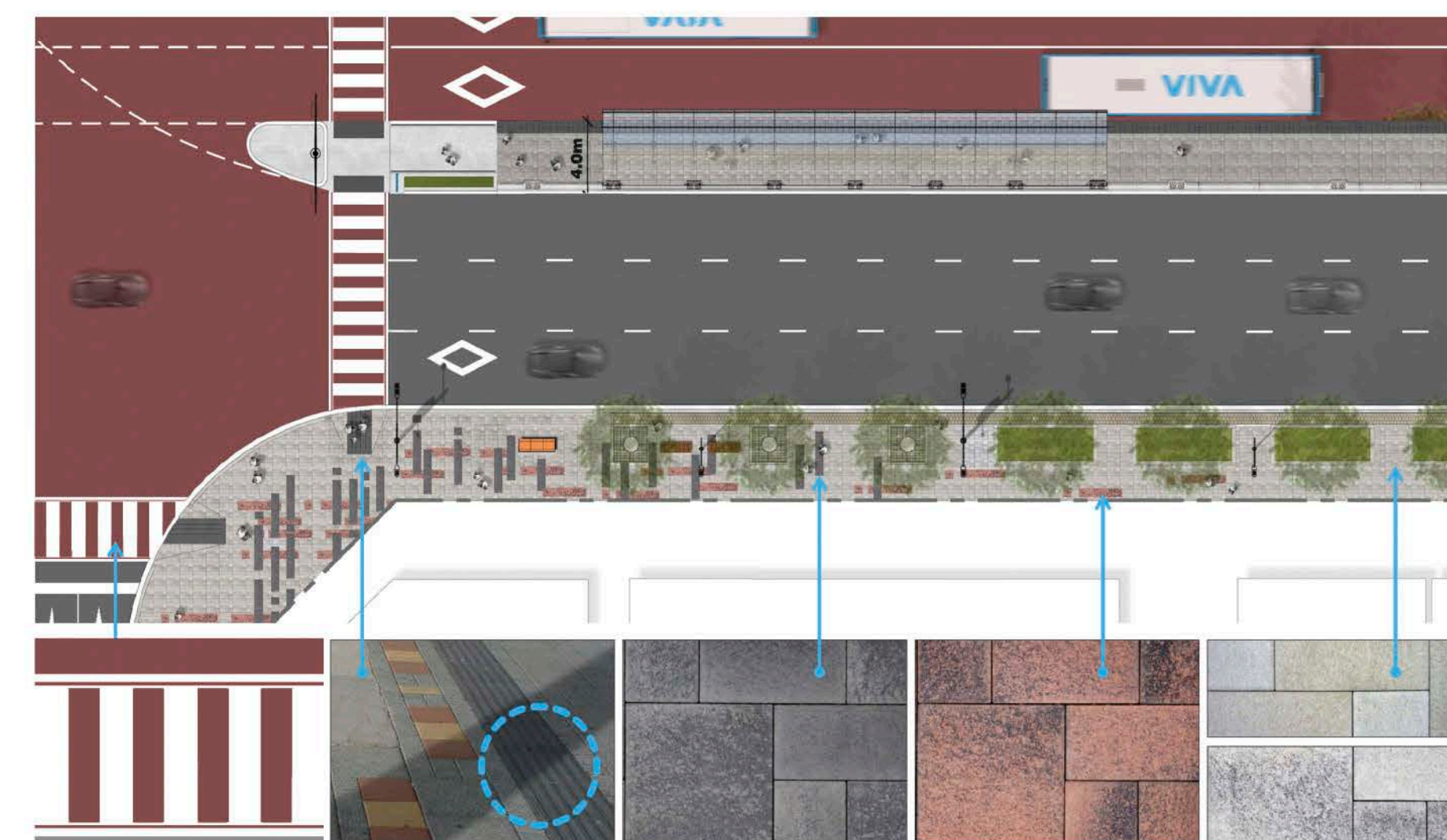


New Westminster Rd

North Promenade



vivastation



streetscape

bathurst street rapidway

11. Centre Street to Westmount Boulevard

Westmount Blvd

New Westminster Dr

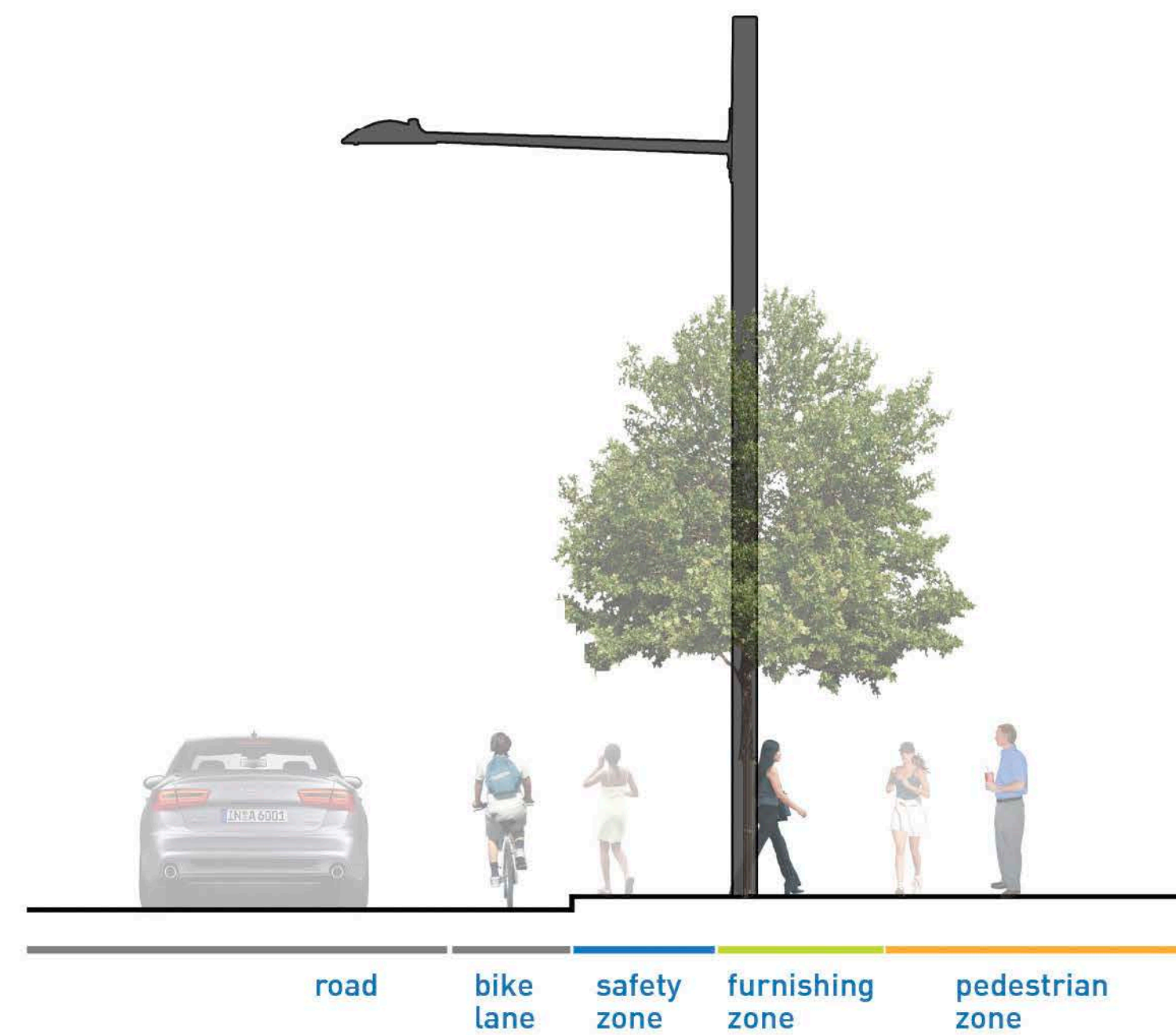
Beverley Glen Blvd

Centre St

Bathurst St

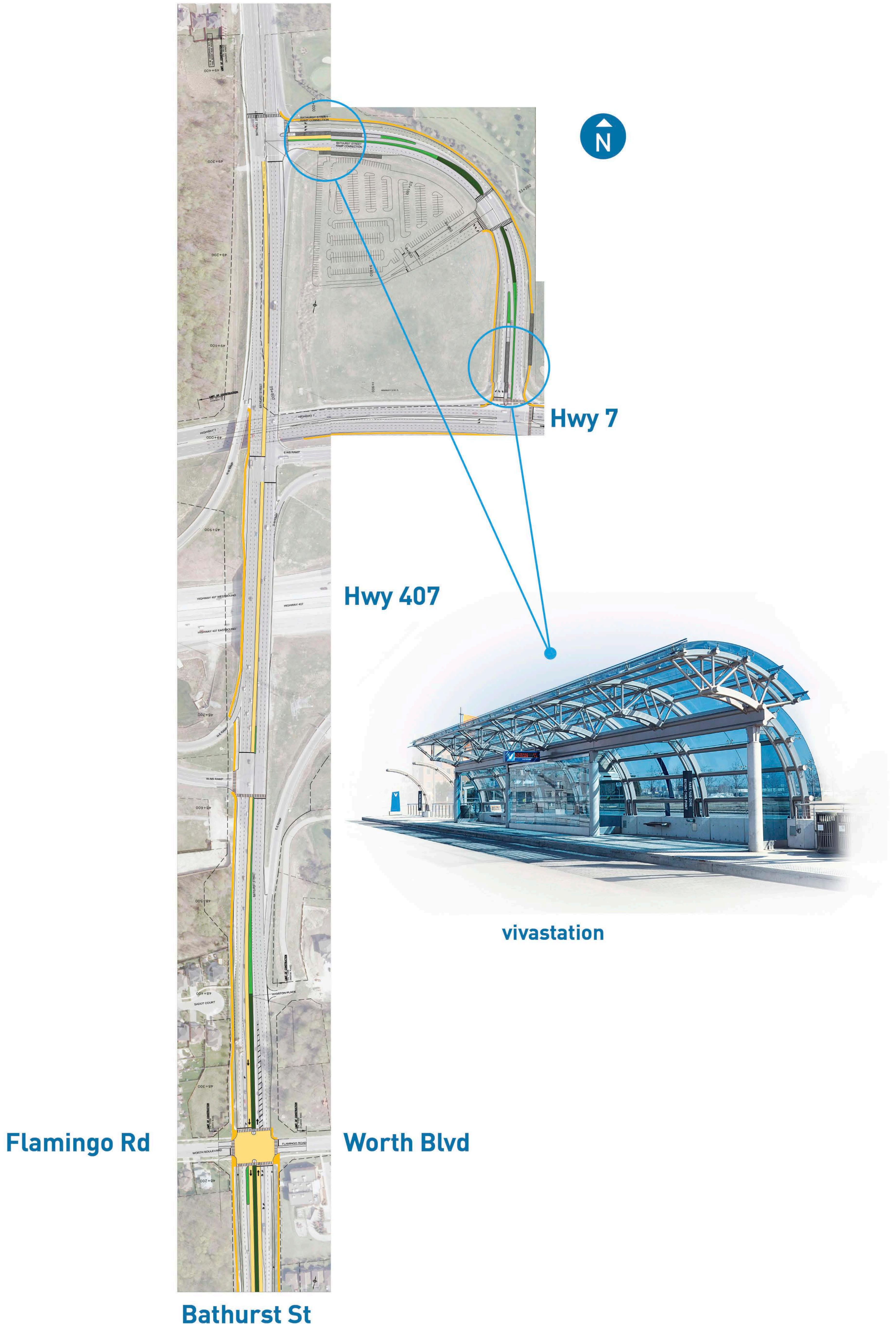


vivastation



bathurst street rapidway

12. Flamingo Road to Bathurst Street

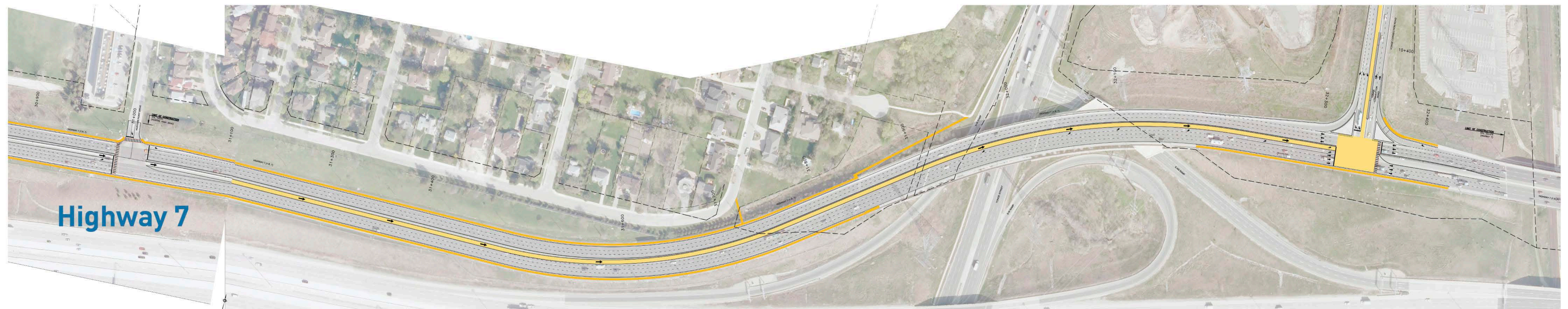


13. New Westminster Road to Bathurst Street

Hunters Point Dr

Yonge St

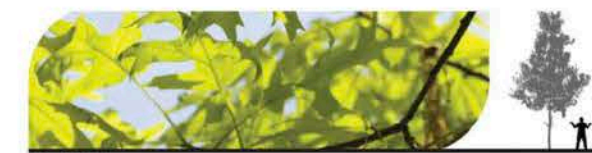
Yonge Connection Road



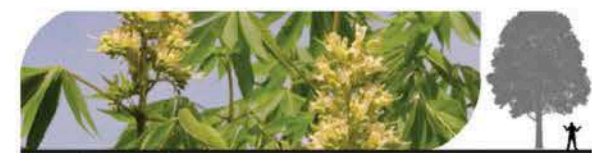
Highway 7



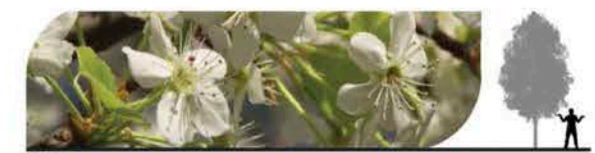
Street tree selection



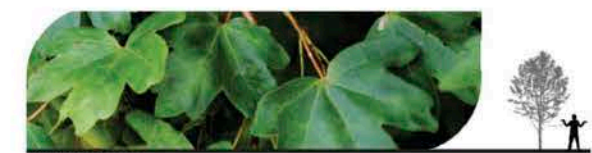
Red Oak
Quercus rubra



American Buckeye
Aesculus glabra



Pear
Pyrus 'Aristocrat' / 'Capital' / 'Chanteleer' / 'Redspire'



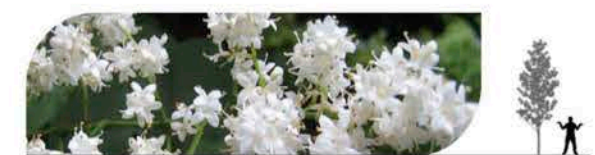
Field Maple
Acer campestre



Kentucky Coffeetree
Gymnocladus dioica



Shademaster Honeylocust
Gleditsia triacanthos var. Inermis 'Shademaster'



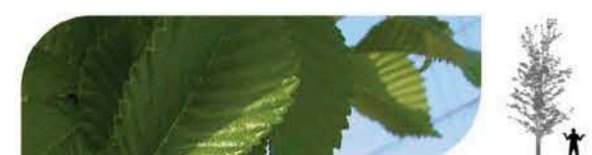
Ivory Silk Tree Lilac
Syringa reticulata 'Ivory silk'



Serviceberry
Amelanchier canadensis



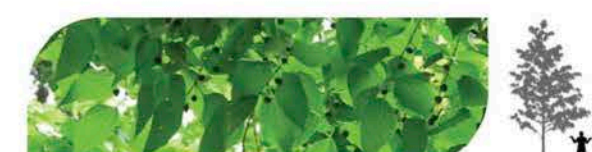
Freeman Maple
Acer x freemanii



Accolade Elm
Ulmus 'Accolade'



Shubert Chokecherry
Prunus virginiana 'Shubert'



Common Hackberry
Celtis occidentalis



Greenspire Linden
Tilia cordata 'Greenspire'

Streetscape includes a variety of tree species.