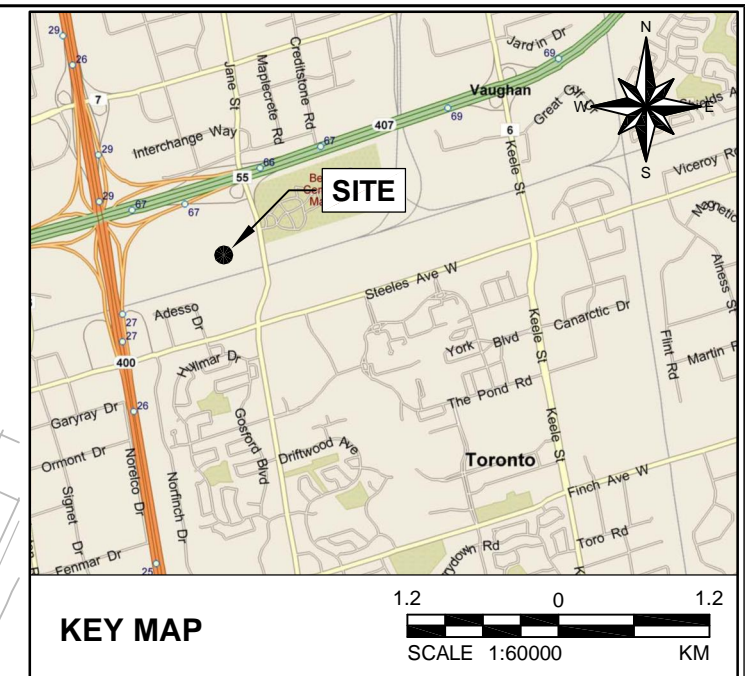
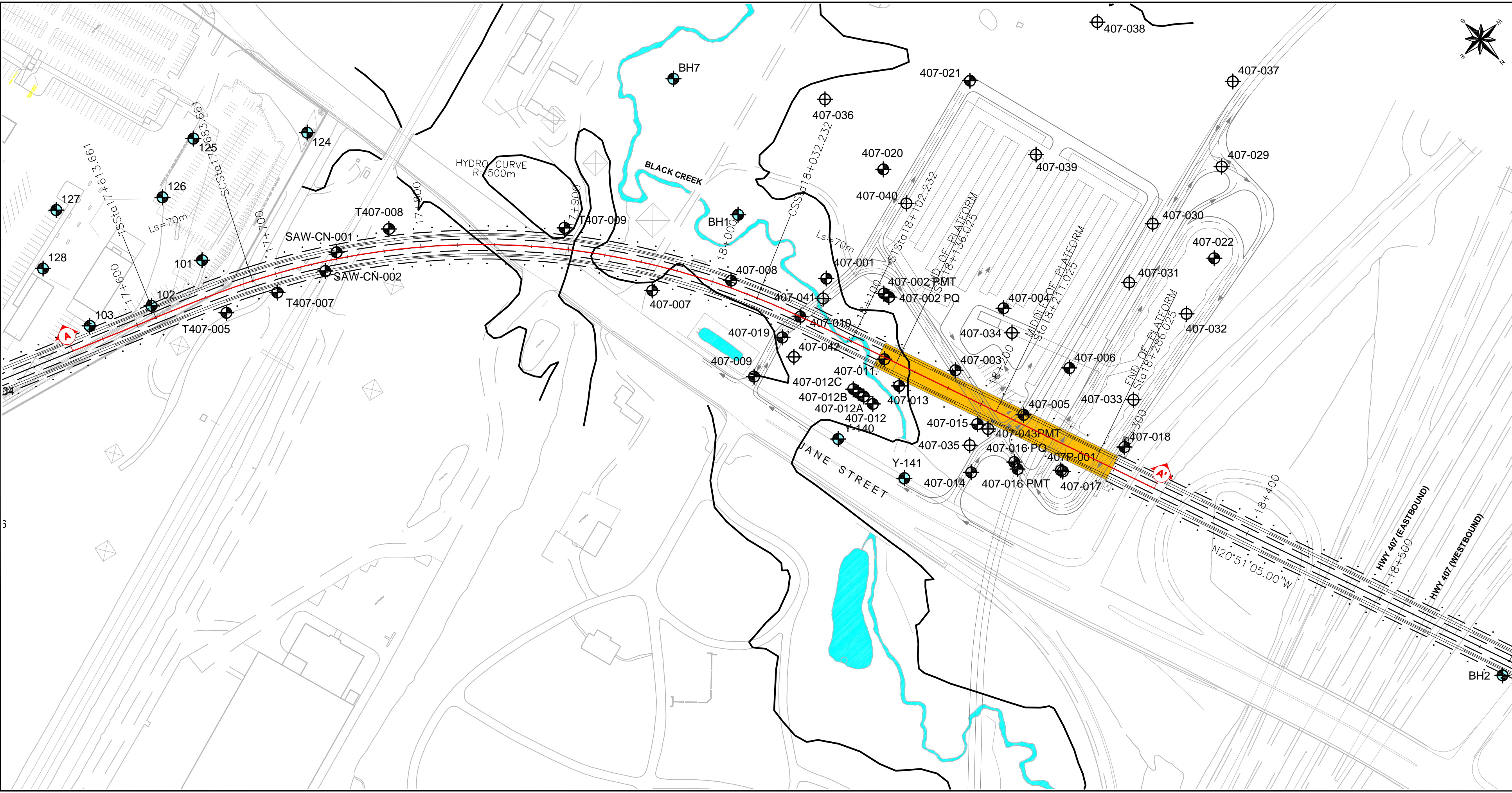


PLOT DATE: November 24, 2009
 FILENAME: T:\Projects\2008\08-1111-0039 (TTC, York Spadina Subway Ext., Toronto)\-BAA-Tower 158 EA (1150)\0811110039BAA001.dwg

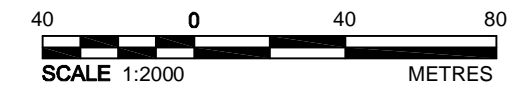


DRAFT

- LEGEND:**
- INITIAL INVESTIGATION BOREHOLE, (TYSSSE)
 - EXISTING BOREHOLE (GOLDER 1981 AND 2006)
 - FLOODLINE

- NOTES:**
- PQ CORING (PQ) AND PRESSUREMETER TESTING (PMT) WAS CARRIED OUT AT THE LOCATION OF BOREHOLES 407-002 AND 407-016.

- REFERENCES:**
- BASE PLAN AND ALIGNMENT PROVIDED IN DIGITAL FORMAT BY TORONTO TRANSIT COMMISSION, RECEIVED ON JULY 10, 2009.



PROJECT: INITIAL GEO-ENGINEERING DESIGN
 TORONTO-YORK SPADINA SUBWAY EXTENSION
 CONTRACT NO. A85-77

TITLE: **BOREHOLE LOCATION PLAN**

	PROJECT No.	08-1111-0039	FILE No.	0811110039BAA001.dwg	
	DESIGN	DLW	Dec. 10, 2008	SCALE	AS SHOWN
	CAD	DDRJ	Nov. 24, 2009	FIGURE No.	
	CHECK	SLP	Nov. 24, 2009		
	REVIEW	JW	Nov. 24, 2009		