

CN Rail Halton Subdivision

Proposed Hwy 7 Station

Hwy 407 Subway Station

Black Creek

Beechwood Cemetery

E-W Collector Road

UPS Existing Facility

UPS Expansion Plan

Steeles West Station

NOT TO SCALE

- ALTERNATIVE ALIGNMENT #1
- ALTERNATIVE ALIGNMENT #2
- ALTERNATIVE ALIGNMENT #3
- ALTERNATIVE ALIGNMENT #4
- FUTURE 407 TRANSWAY (CONCEPTUAL ALIGNMENT)
- BLACK CREEK FILL REGULATION LMT
- FUTURE VOC ROAD NETWORK
- PARCEL BOUNDARIES
- HYDRO TRANSMISSION LINES
- PROPOSED E-W COLLECTOR ROAD

**VAUGHAN SUBWAY LINK
ALIGNMENT ALTERNATIVES**

2 - 1

PK LINE

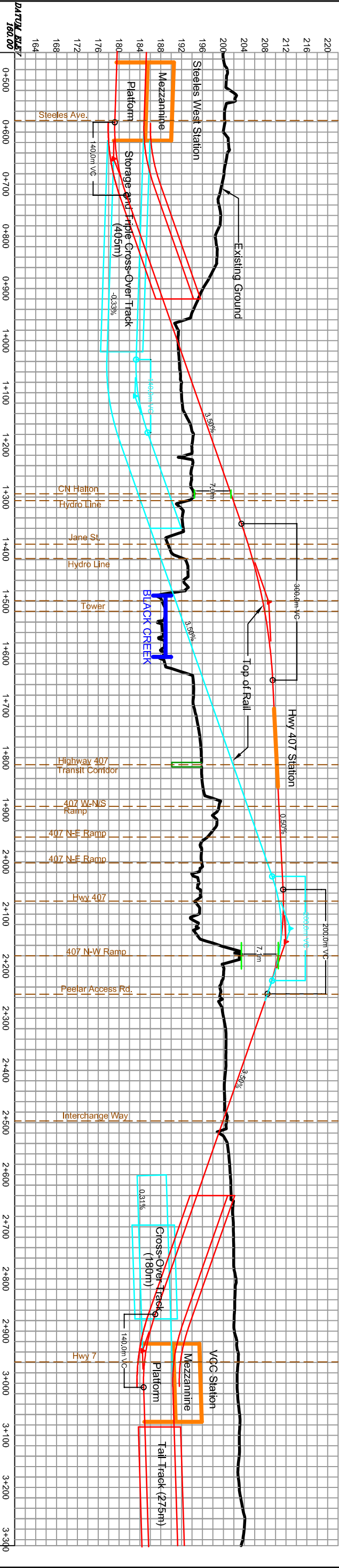


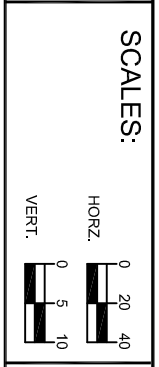
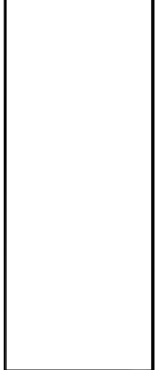
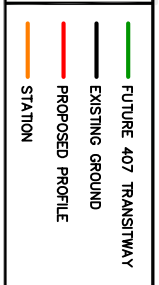
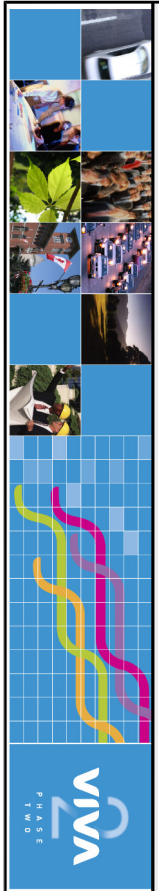
VIVA
 PHASE 1
 T R A S

- 407 TRANSITWAY
- EXISTING GROUND
- PROPOSED PROFILE
- STATION

NOT TO SCALE

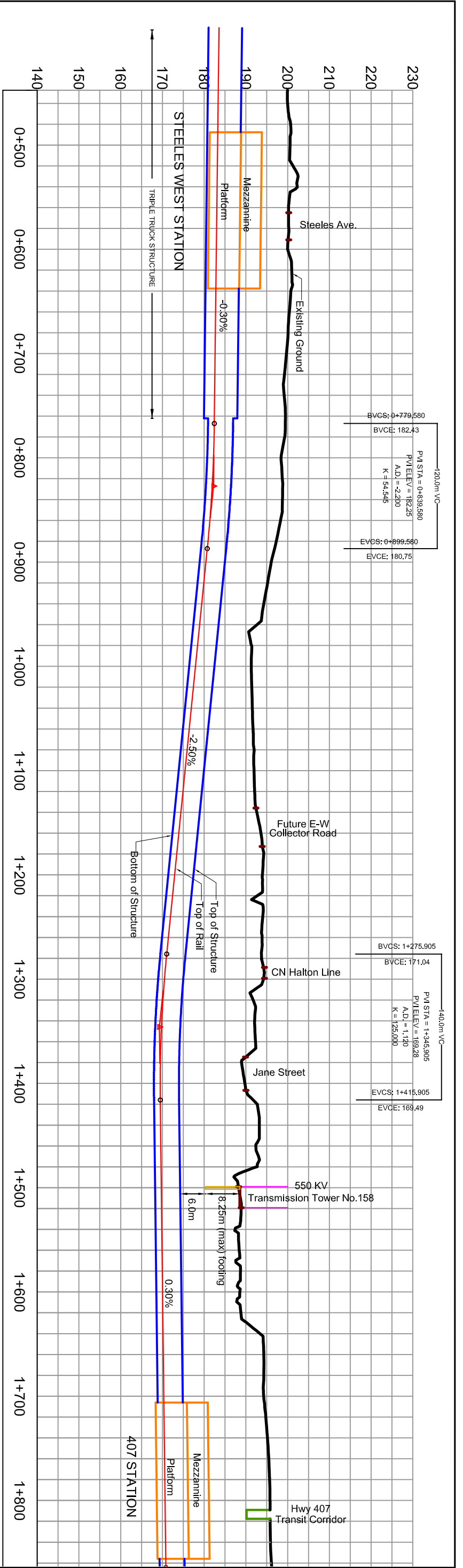
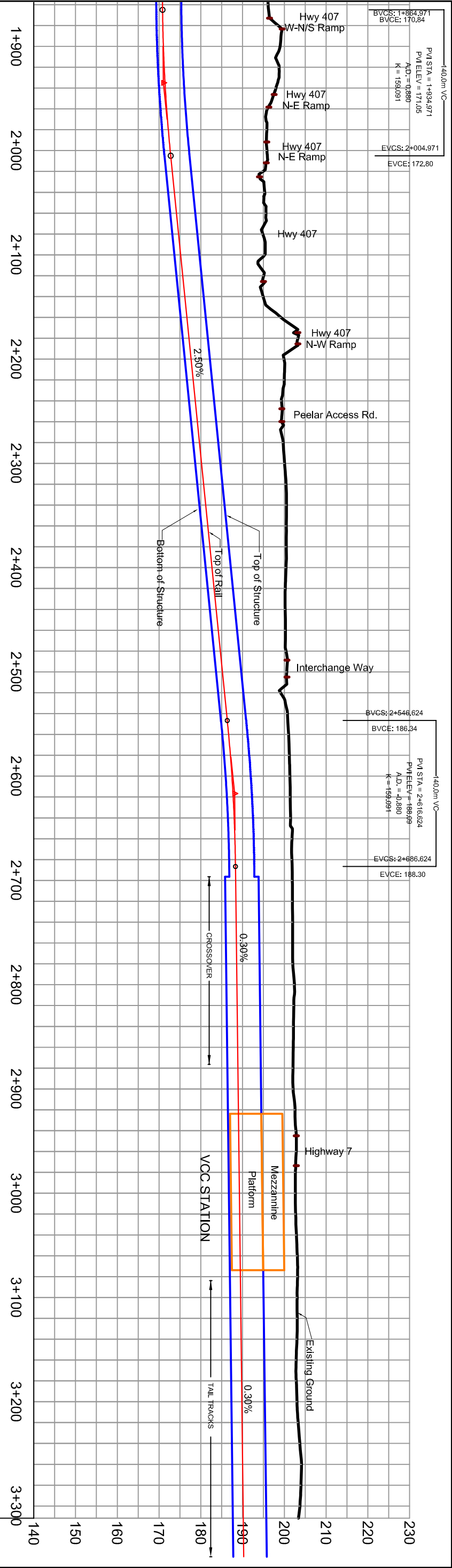
VAUGHAN SUBWAY LINK
ELEVATED AND COMBINATION PROFILE ALTERNATIVES

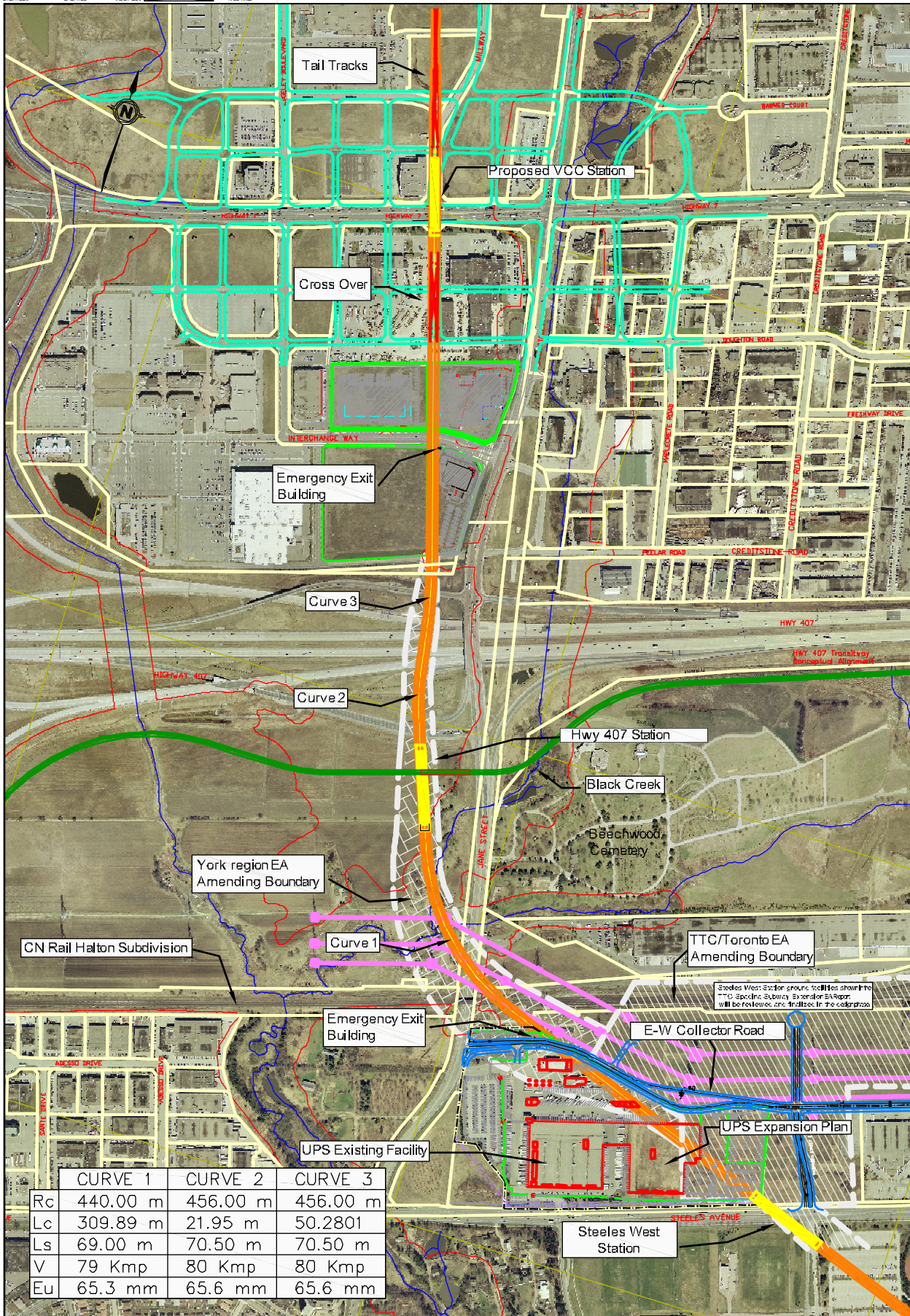




VAUGHAN SUBWAY LINK PREFERRED PROFILE

2-3
 FIGURE



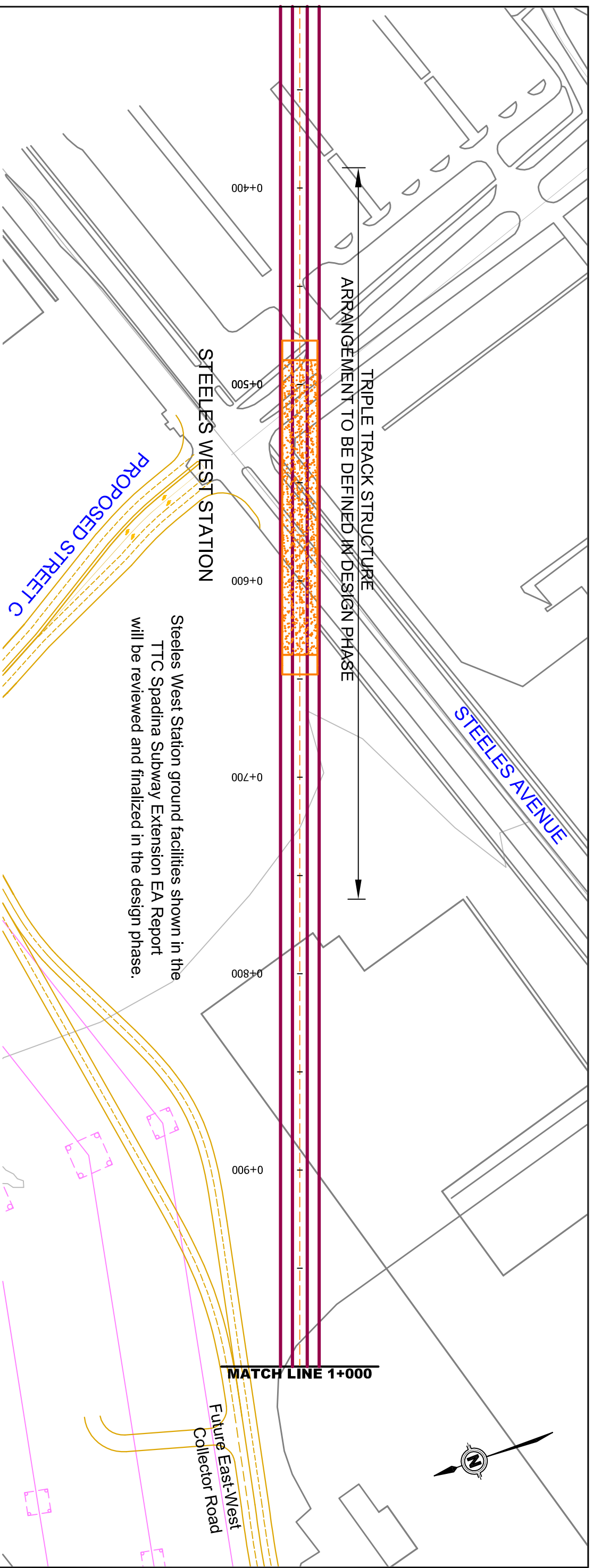


	CURVE 1	CURVE 2	CURVE 3
Rc	440.00 m	456.00 m	456.00 m
Lc	309.89 m	21.95 m	50.2801
Ls	69.00 m	70.50 m	70.50 m
V	79 Kmp	80 Kmp	80 Kmp
Eu	65.3 mm	65.6 mm	65.6 mm

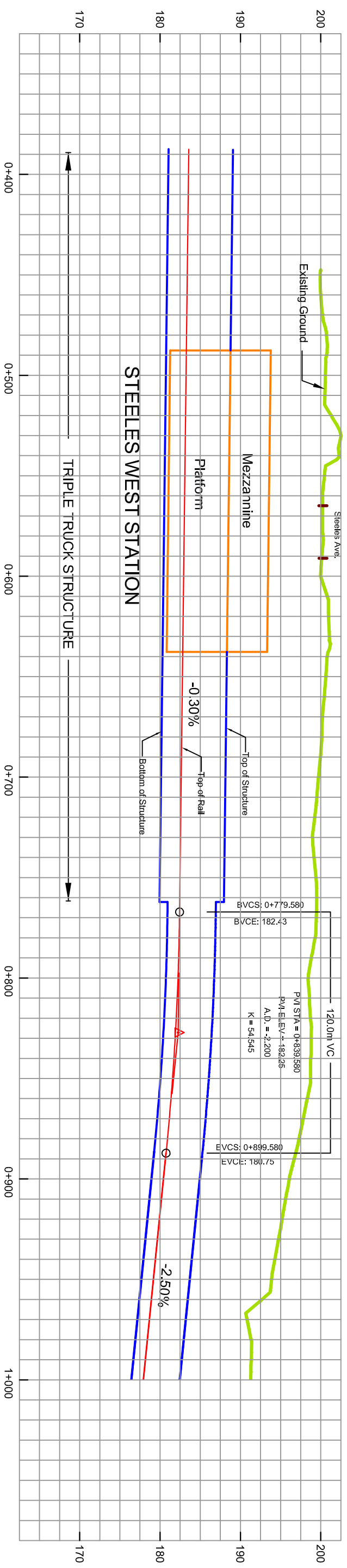
Note: Modifications to any works associated with the undertaking that fall outside the defined boundary will require an amendment.

PREFERRED ALTERNATIVE ALIGNMENT	FUTURE VCC ROAD NETWORK	PROPOSED E-W COLLECTOR ROAD
FUTURE 407 TRANSITWAY (CONCEPTUAL ALIGNMENT)	PARCEL BOUNDARIES	
HYDRO TRANSMISSION LINES	BLACK CREEK FILL REGULATION LIMIT	

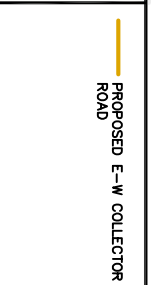
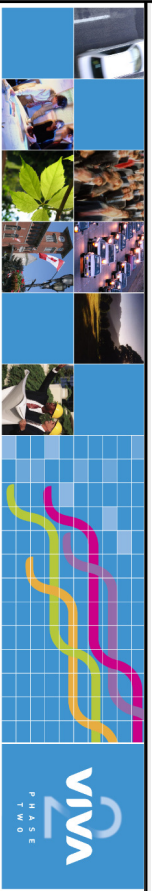
NOT TO SCALE



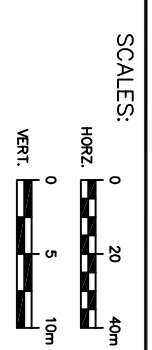
Steeles West Station ground facilities shown in the TTC Spadina Subway Extension EA Report will be reviewed and finalized in the design phase.



DRAWING NAME: _____
 CREATED: _____ MODIFIED: _____ MODTIME: _____

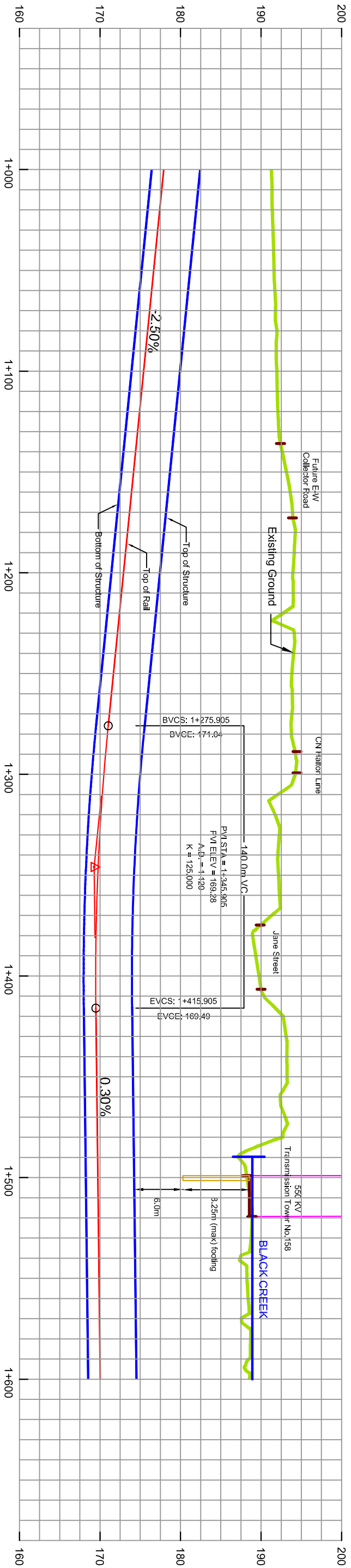
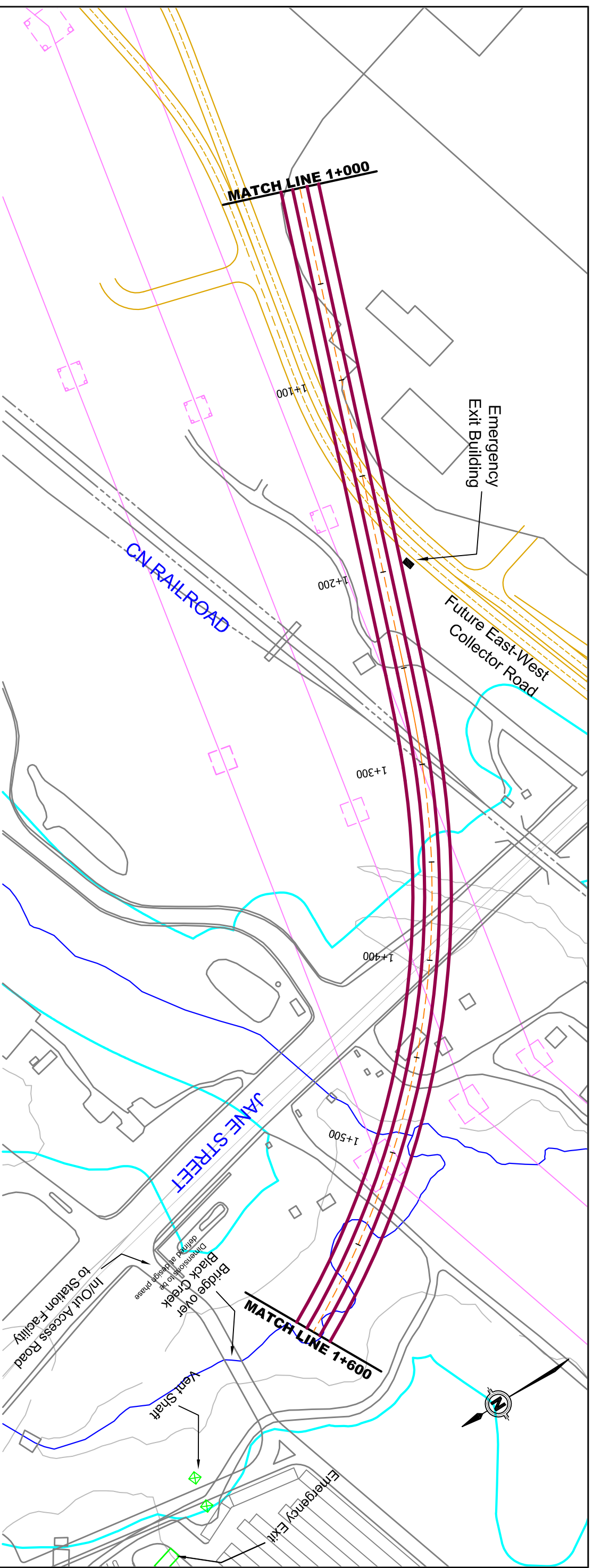


PROPOSED E-W COLLECTOR ROAD

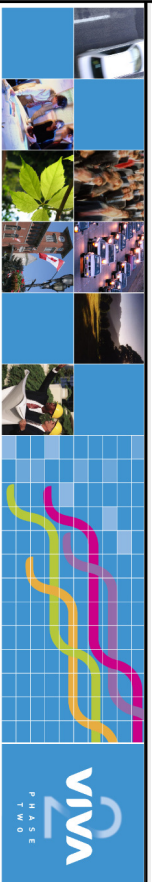


VAUGHAN SUBWAY LINK
HORIZONTAL AND VERTICAL ALIGNMENTS
 STA. 0+400 TO STA. 1+000

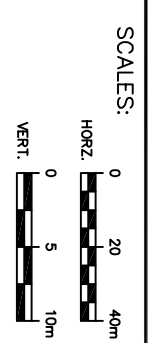
3 - 2
 FIGURE



DRAWING NAME: _____
 CREATED: _____ MODIFIED: _____ MODTIME: _____



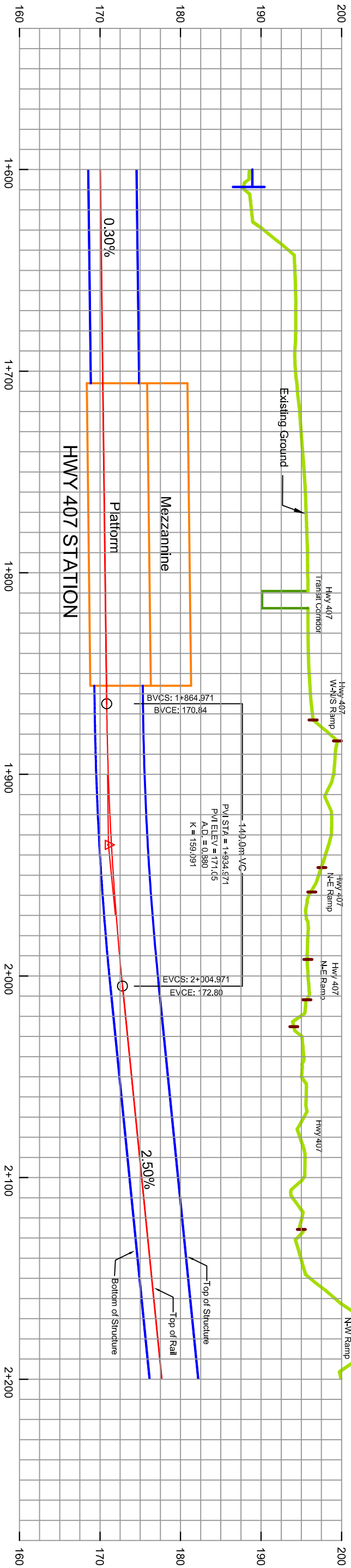
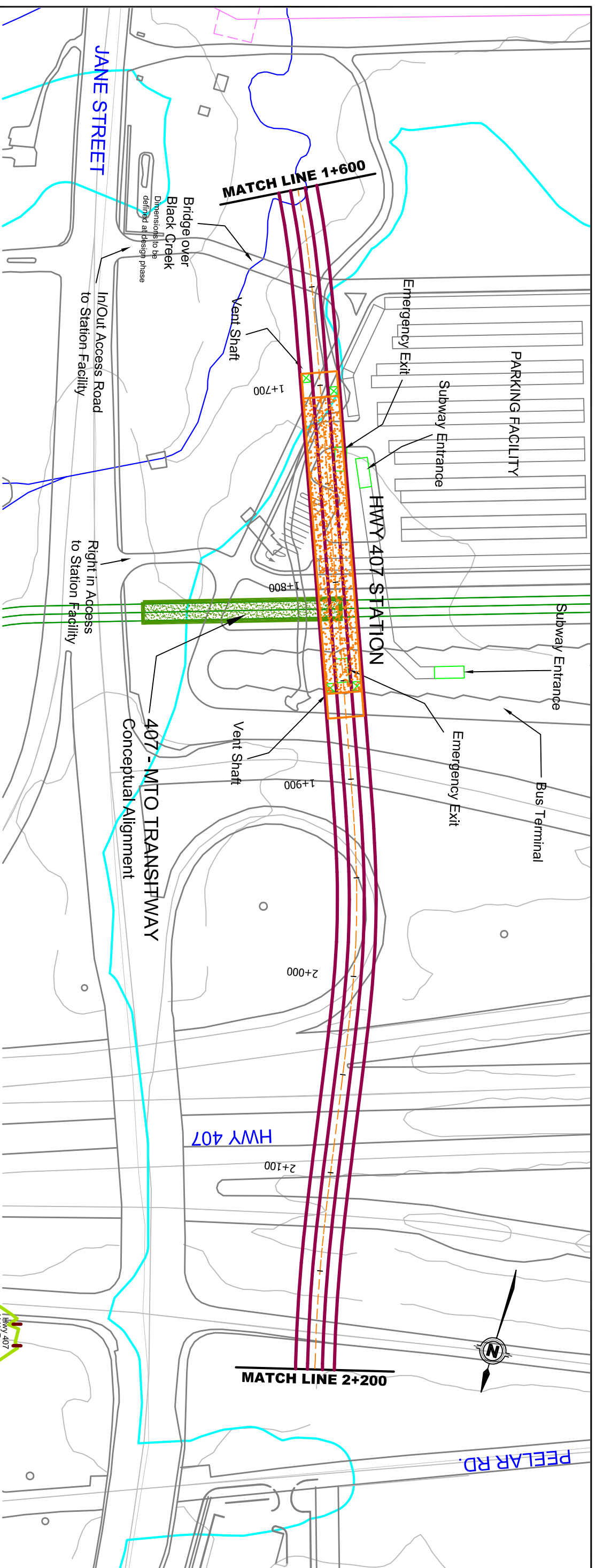
- BLACK CREEK
- HYDRO TRANSMISSION LINES
- BLACK CREEK FILL REGULATION LIMIT
- PROPOSED E-W COLLECTOR ROAD



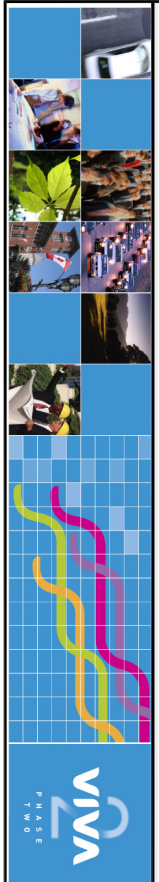
VAUGHAN SUBWAY LINK

HORIZONTAL AND VERTICAL ALIGNMENTS

STA. 1+000 TO STA. 1+600



DRAWING NAME: _____
 CREATED: _____ MODIFIED: _____ MODTIME: _____



VIVA
 PHASE TWO

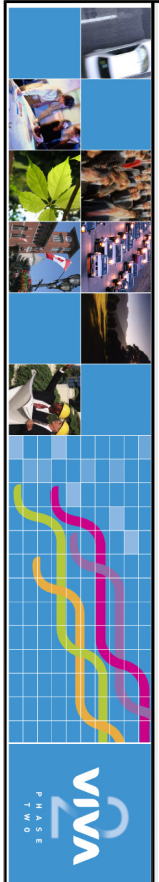
- FUTURE 407 TRANSFWAY (CONCEPTUAL ALIGNMENT)
- HYDRO TRANSMISSION LINES
- BLACK CREEK FILL REGULATION LIMIT
- BLACK CREEK

SCALES:

HORZ.

VERT.

VAUGHAN SUBWAY LINK
HORIZONTAL AND VERTICAL ALIGNMENTS
 STA. 1+600 TO STA. 2+200

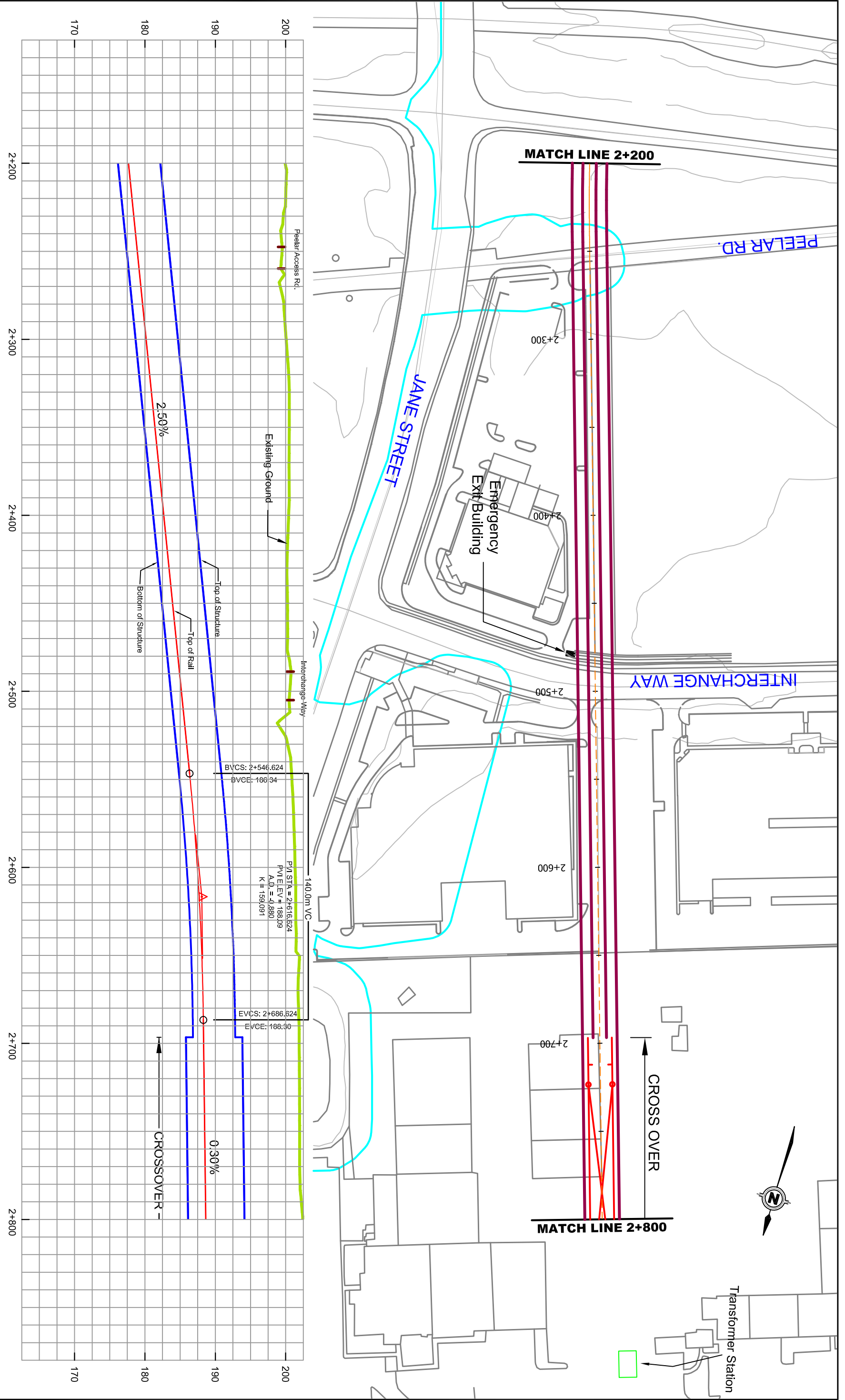


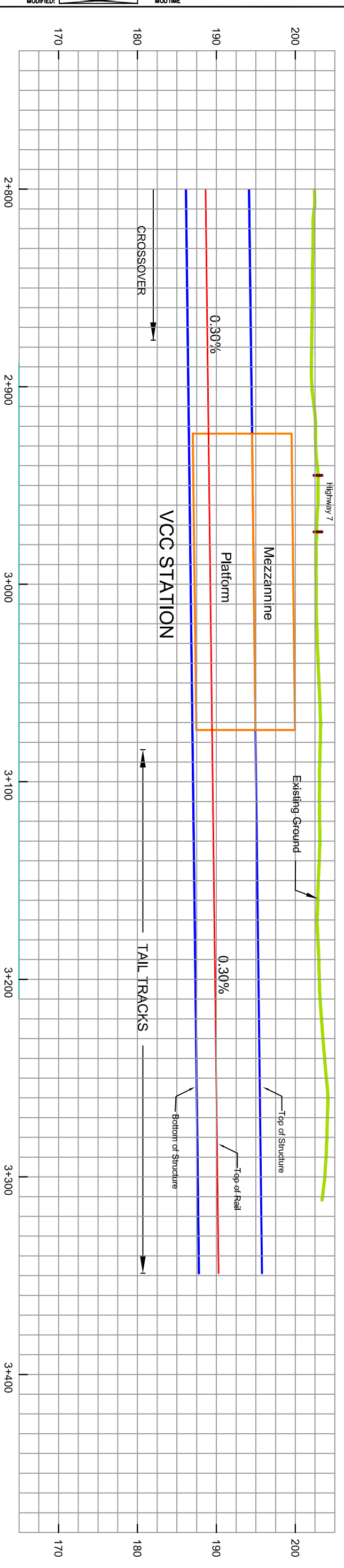
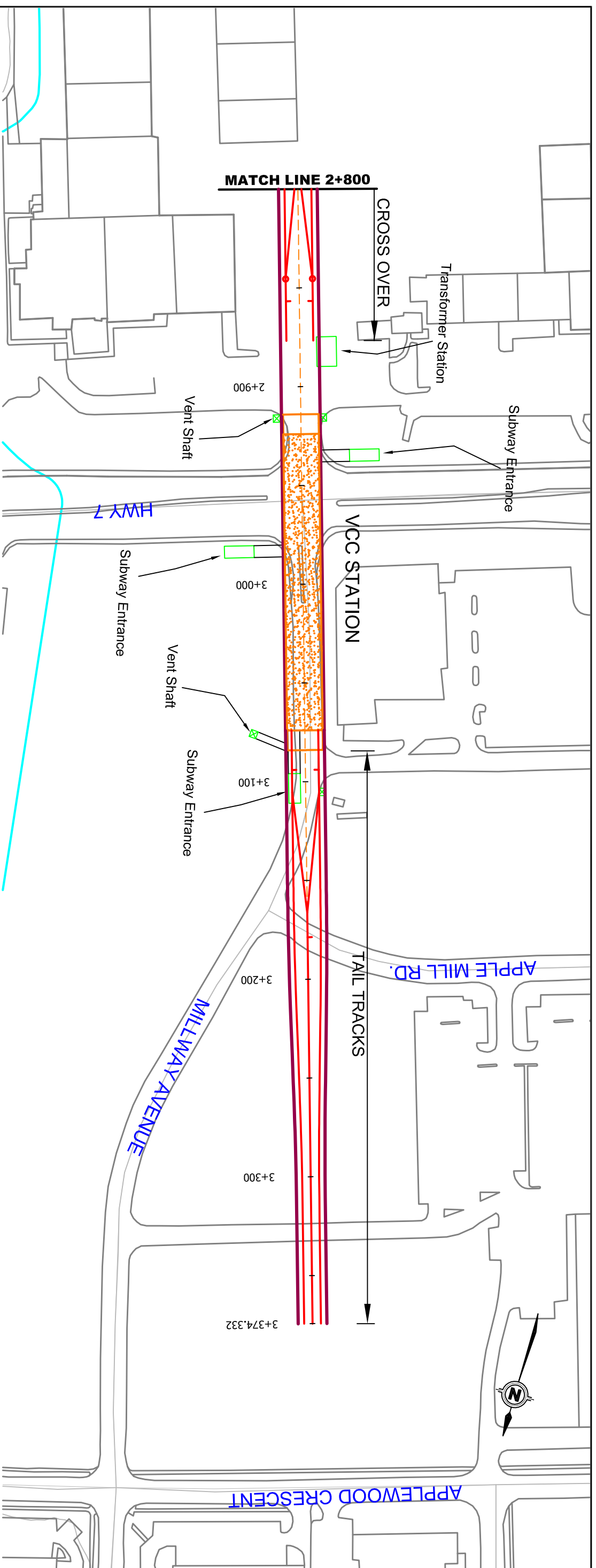
BLACK CREEK FILL REGULATION LIMIT

SCALES:
 HORZ. 0 20 40m
 VERT. 0 5 10m

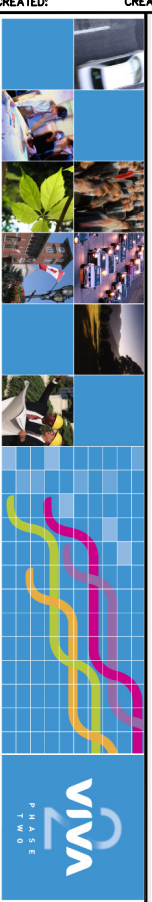
**VAUGHAN SUBWAY LINK
 HORIZONTAL AND VERTICAL ALIGNMENTS
 STA. 2+200 TO STA. 2+800**

3 - 5
 FIGURE

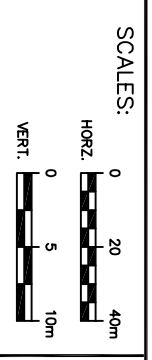




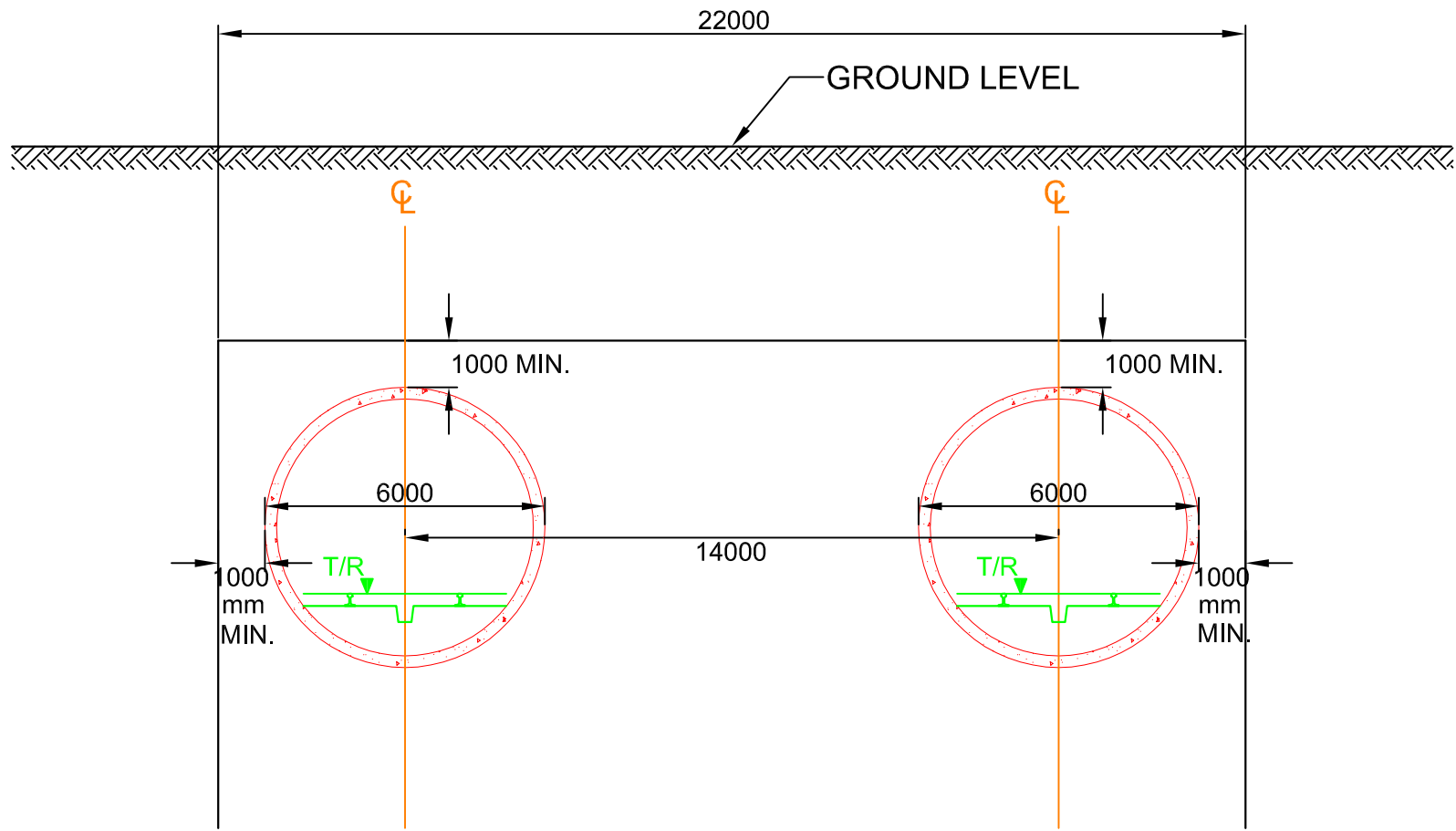
DRAWING NAME: _____
 CREATED: _____ MODIFIED: _____ MODTIME: _____



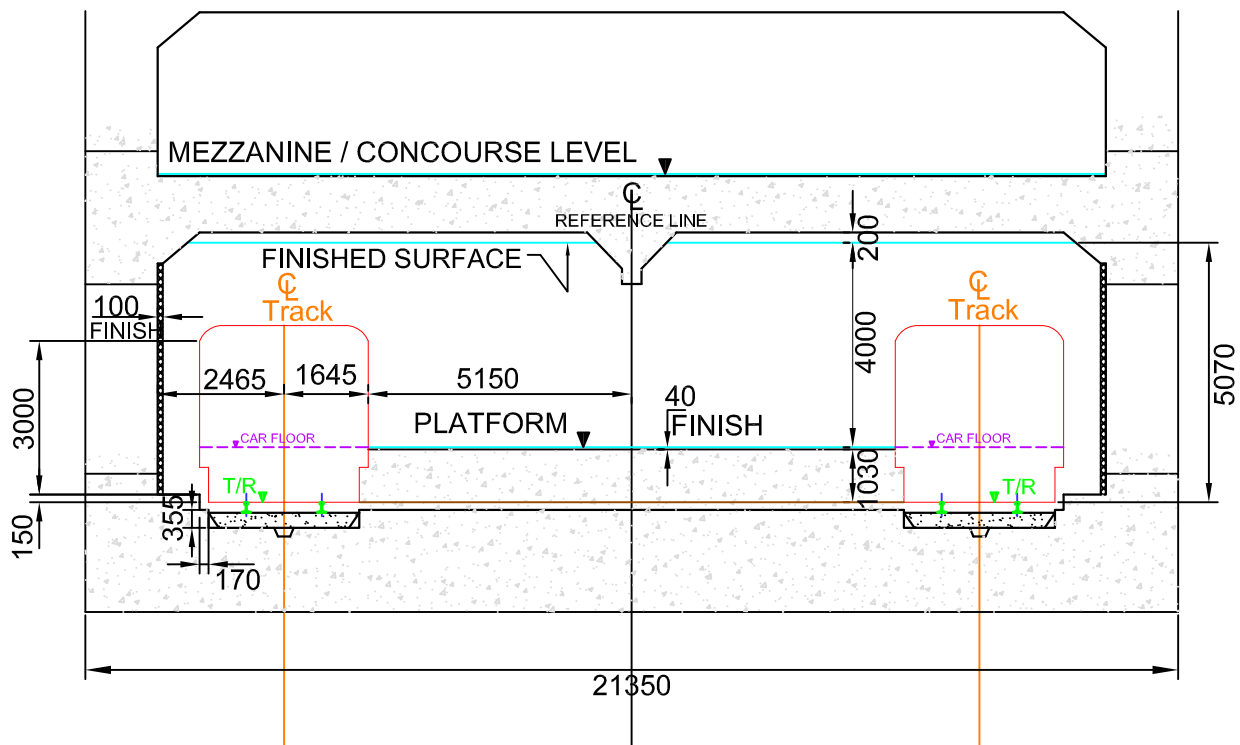
BLACK CREEK FILL
 REGULATION LIMIT



VAUGHAN SUBWAY LINK
HORIZONTAL AND VERTICAL ALIGNMENTS
STA. 2+800 TO STA. 3+311.71



**R.O.W. TUNNEL SECTION
TYPICAL**



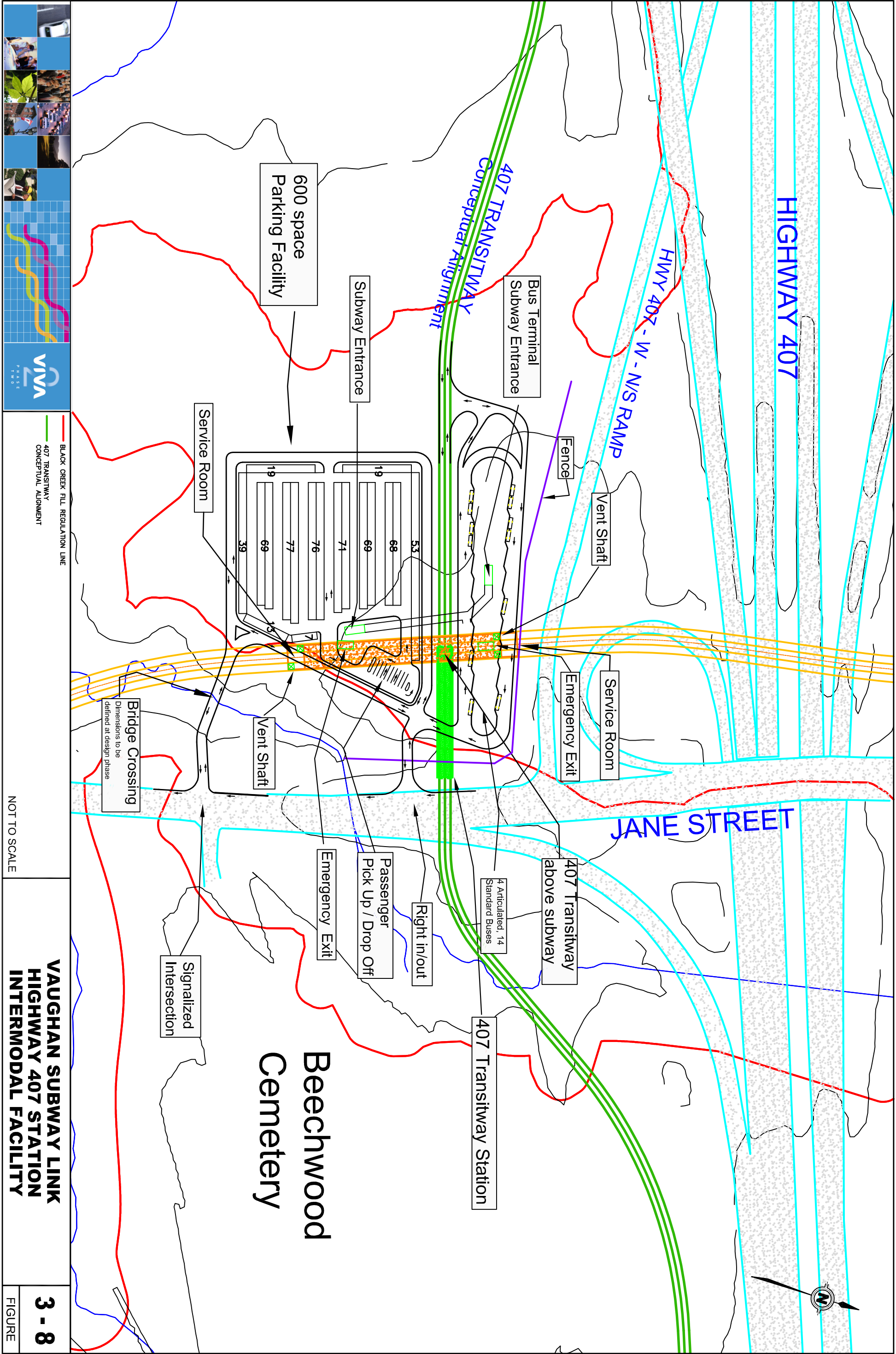
**CENTRE PLATFORM STATION
TYPICAL**

NOTES:

1. THESE SECTIONS ARE PROVIDED AS A GUIDELINE ONLY FOR ESTABLISHING RIGHT -OF-WAY LIMITS
2. DIMENSIONS GIVEN ARE FOR GENERAL CONDITIONS AND ARE TO BE MODIFIED WHERE ENGINEERING OR PROPERTY REQUIREMENTS DICTATE.
3. ALL DIMENSIONS SHOWN ARE IN MILLIMETERS

SCALE: 1:1500



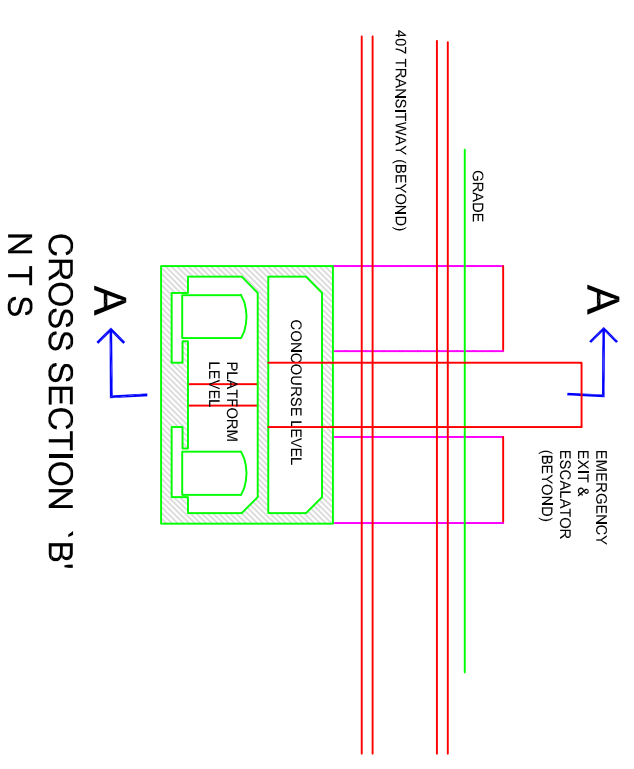
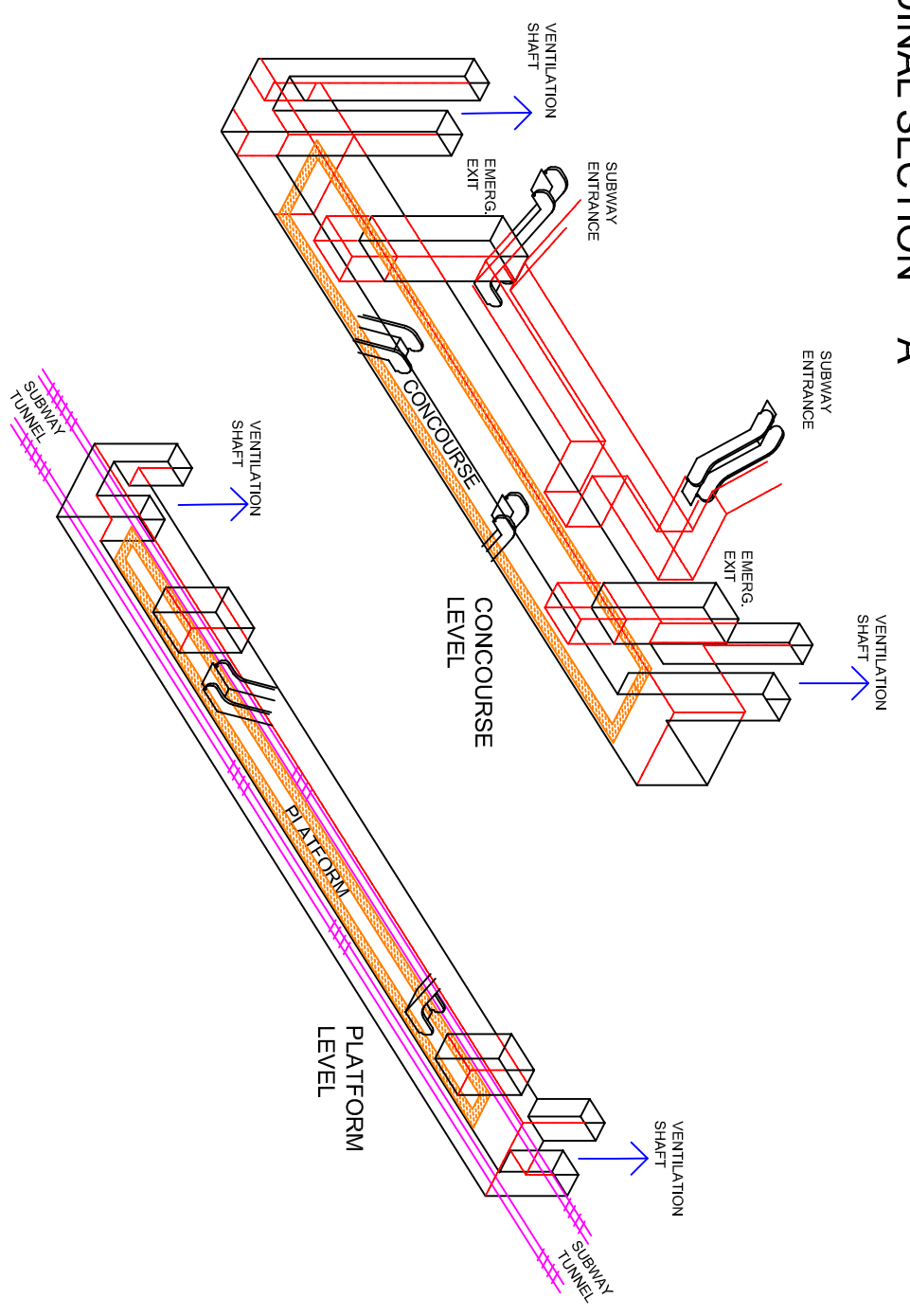
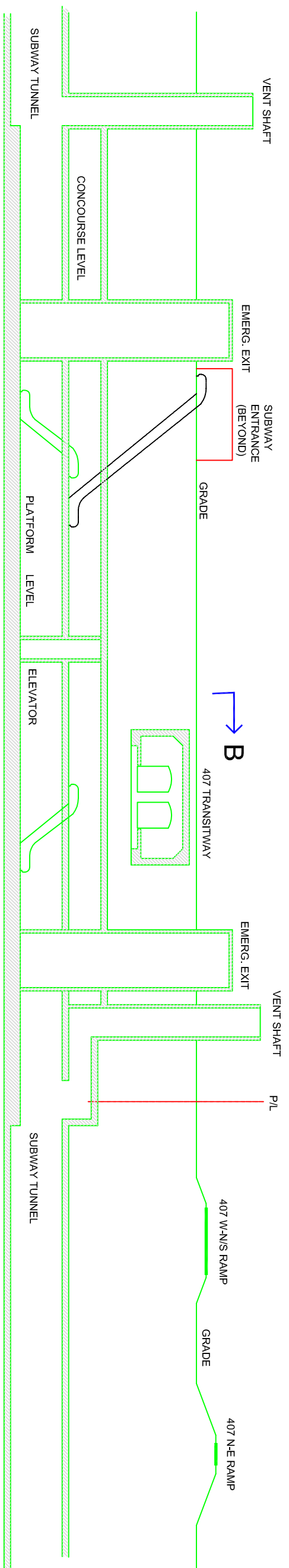


BLACK CREEK FILL REGULATION LINE
 407 TRANSITWAY CONCEPTUAL ALIGNMENT

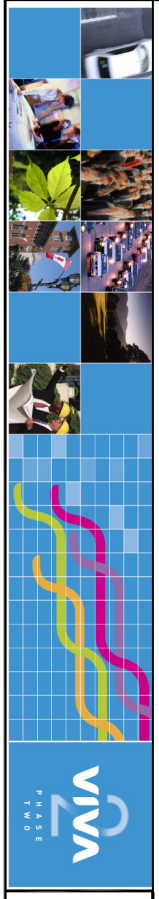
NOT TO SCALE

**VAUGHAN SUBWAY LINK
 HIGHWAY 407 STATION
 INTERMODAL FACILITY**

3 - 8
 FIGURE



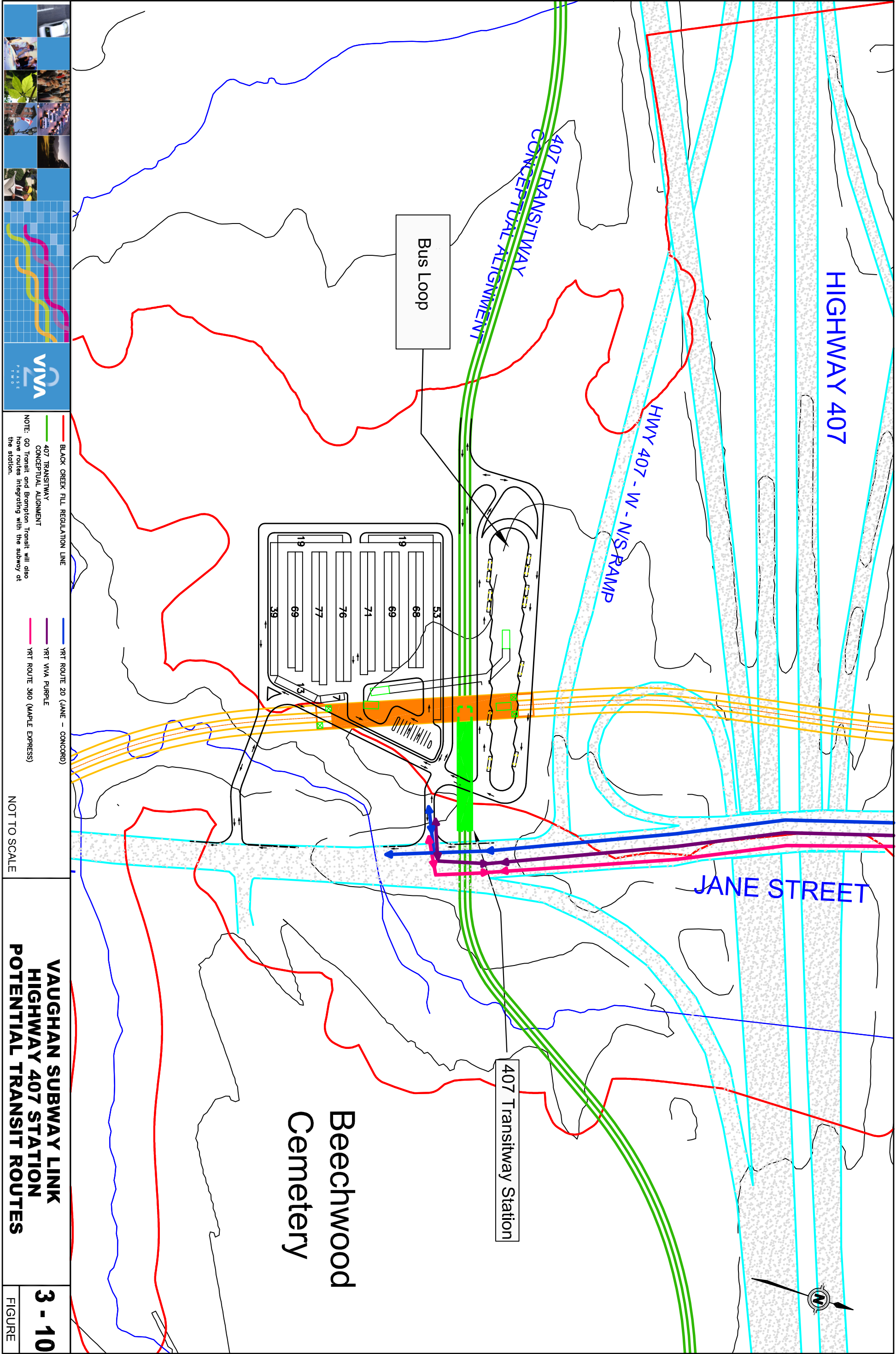
DRAWING NAME: _____
 CREATED: _____ MODIFIED: _____ MODTIME: _____



NOT TO SCALE

VAUGHAN SUBWAY LINK
ISOMETRIC HIGHWAY 407 STATION

3 - 9
 FIGURE



— BLACK CREEK FILL REGULATION LINE
— 407 TRANSITWAY CONCEPTUAL ALIGNMENT
NOTE: GO Transit and Brampton Transit will also have routes integrating with the subway at the station.

— RRT ROUTE 20 (LANE - CONCORD)
— RRT VVA PURPLE
— RRT ROUTE 360 (MAPLE EXPRESS)

NOT TO SCALE

**VAUGHAN SUBWAY LINK
HIGHWAY 407 STATION
POTENTIAL TRANSIT ROUTES**



SUBWAY CL

MILLWAY

APPLEMILL (RING ROAD)

SITE ASSIGNED FOR
 PASSENGER PICK UP /
 DROP OFF FACILITY
 INTEGRATED WITH
 PROPOSED TRANSIT
 SQUARE AND ADJACENT
 DEVELOPMENT

ENTRANCE TO SUBWAY

VENT SHAFT

VCC STATION

BUS LAYOVER

VENT SHAFT

POTENTIAL STREET
 CONFIGURATION
 (PROPOSED IN VCC
 STREETSCAPE STUDY)

YRT BUS STOP

YRT BUS STOP

MOBILITYPLUS

ENTRANCE TO SUBWAY

HIGHWAY 7

HIGHWAY 7

JANE STREET

ENTRANCE TO SUBWAY

MOBILITY PLUS

VENT SHAFT

YRT BUS STOP

SUBSTATION
 TRANSFORMER

YRT BUS STOP

VENT SHAFT

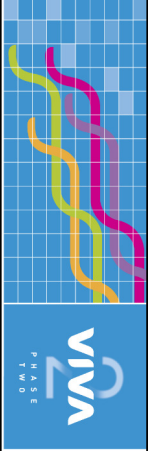
MILLWAY AVE.

NOTE:
 This layout includes the VIVA corridor
 on Highway 7 as well as the VCC
 ultimate road network expansion and
 streetscape master plan.

NOT TO SCALE

- STATION
- FUTURE VCC ROAD NETWORK



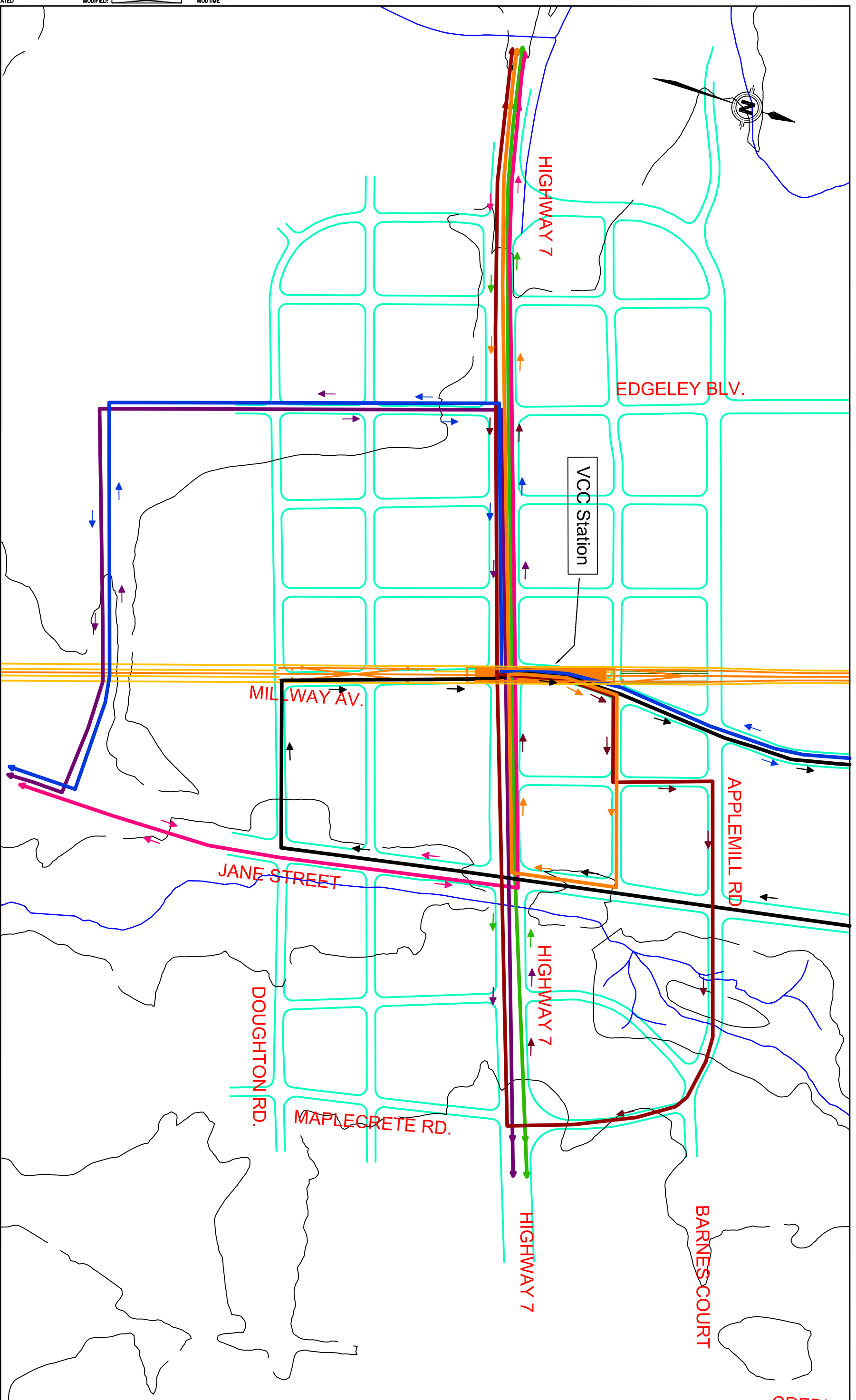


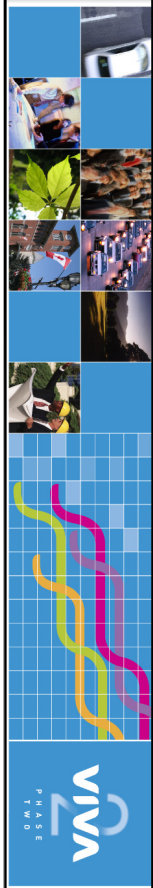
- YRT ROUTE 10 (WOODBRIIDGE)
- YRT ROUTE 20 (JANE - CONCORD)
- YRT ROUTE 77 (HWY 7)
- YRT ROUTE 360 (MAPLE EXPRESS)
- YRT ROUTE 35 (TTC 35 JANE)
- YRT VVA ORANGE
- YRT VVA PURPLE

NOT TO SCALE

**VAUGHAN SUBWAY LINK
 VCC STATION ULTIMATE YRT-VIVA
 TRANSIT ROUTES**

3 - 12
 FIGURE



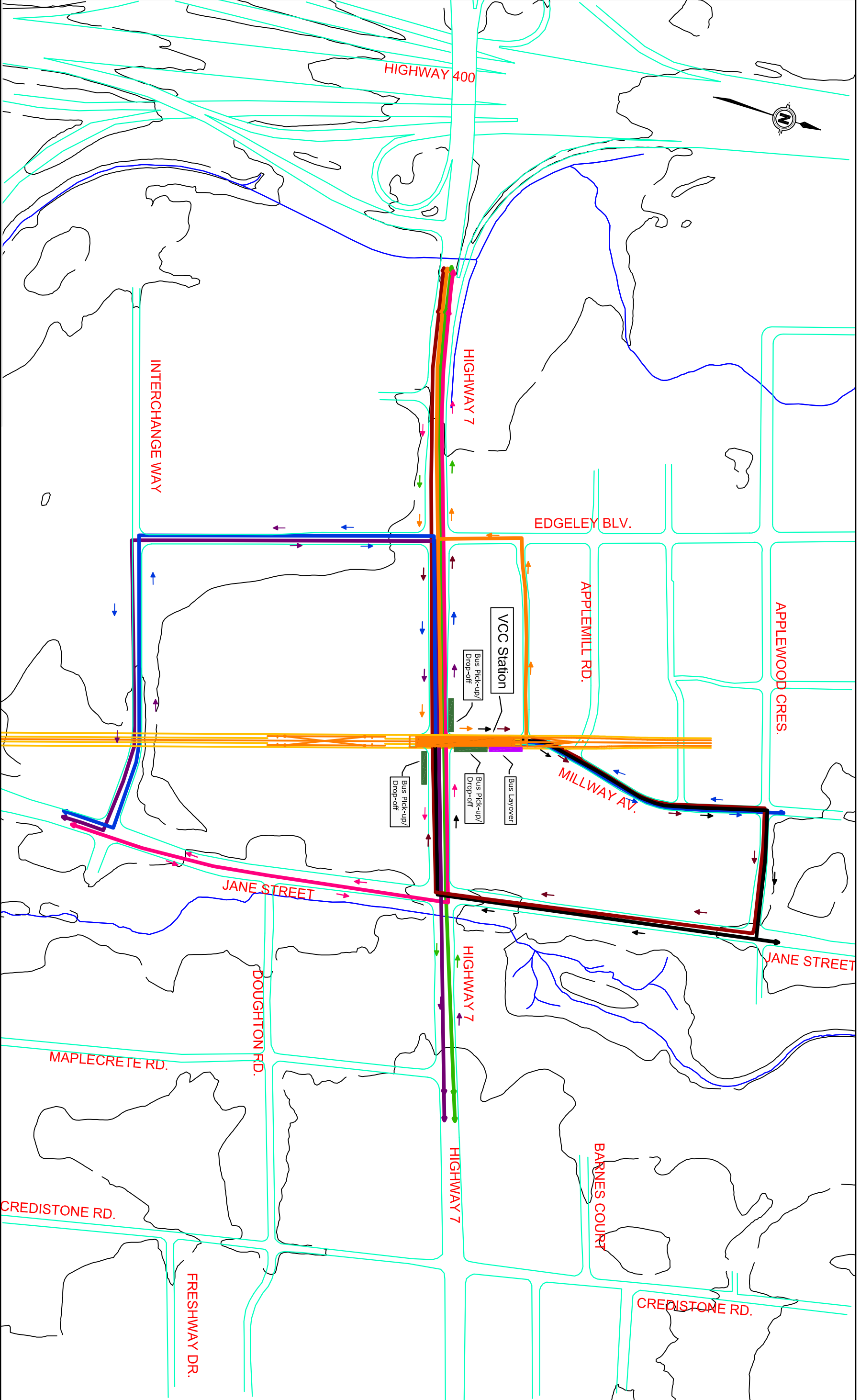


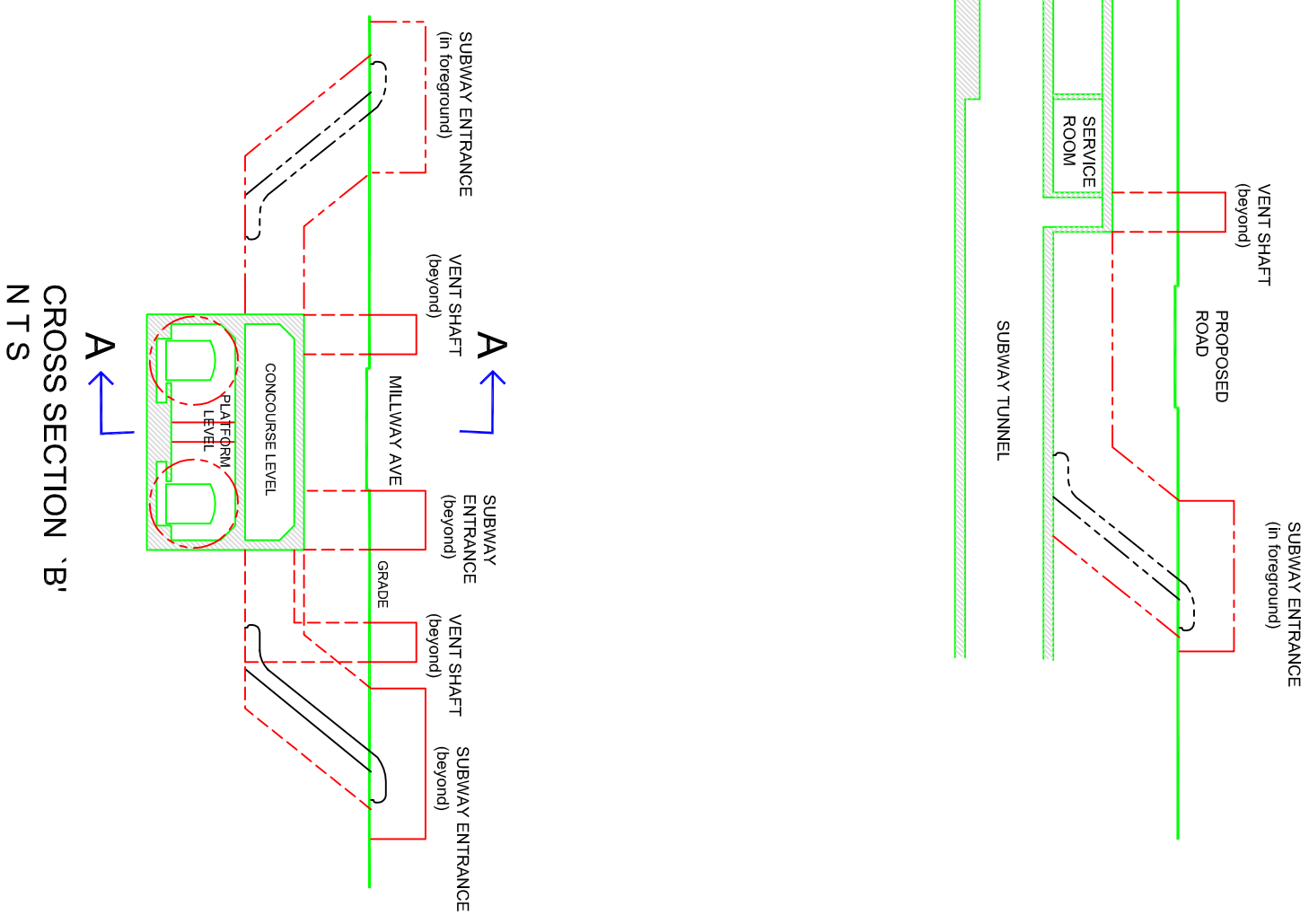
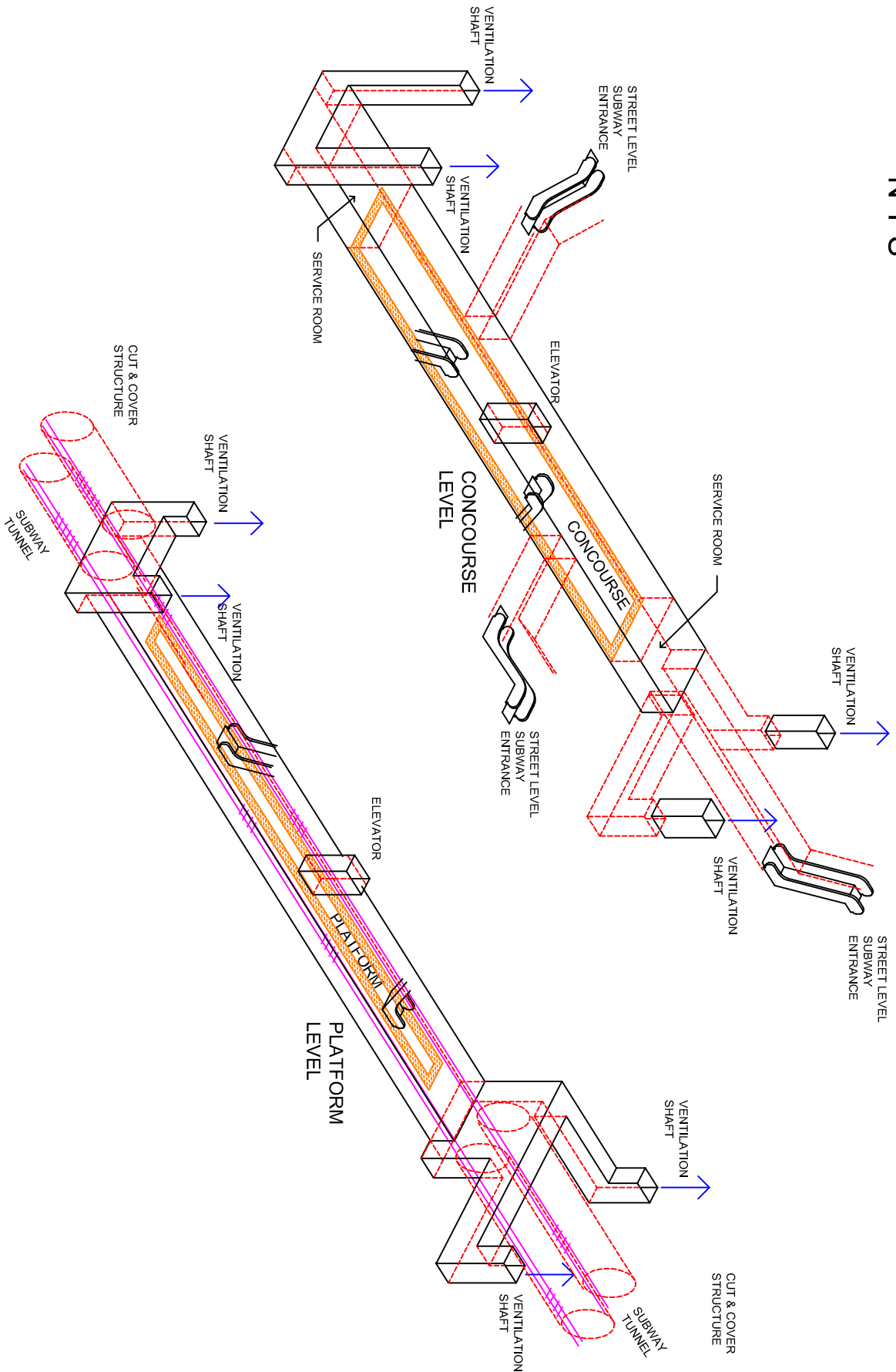
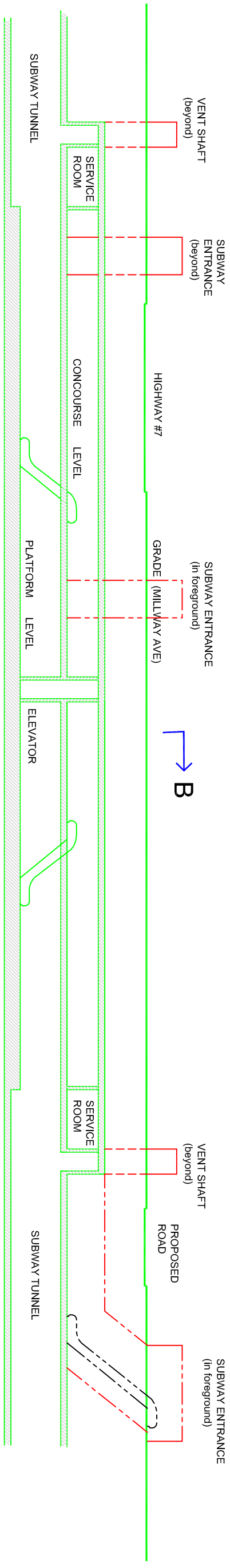
- YRT ROUTE 10 (WOODBRIIDGE)
- YRT ROUTE 20 (JANE - CONCORD)
- YRT ROUTE 77 (HWY 7)
- YRT ROUTE 360 (MAPLE EXPRESS)
- YRT ROUTE 35 (TTC 35 JANE)
- YRT VVA ORANGE
- YRT VVA PURPLE

NOT TO SCALE

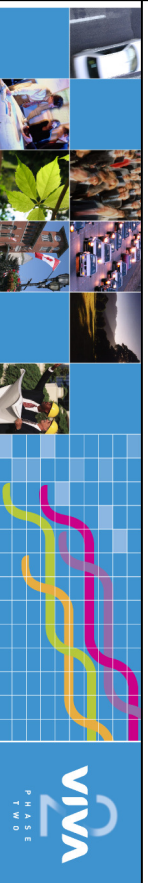
**VAUGHAN SUBWAY LINK
 VCC STATION INTERIM YRT-VIVA
 TRANSIT ROUTES**

3 - 13
 FIGURE





DRAWING NAME: _____
 CREATED: _____ MODIFIED: _____ MODTIME: _____



NOT TO SCALE

**VAUGHAN SUBWAY LINK
 ISOMETRIC VCC STATION**